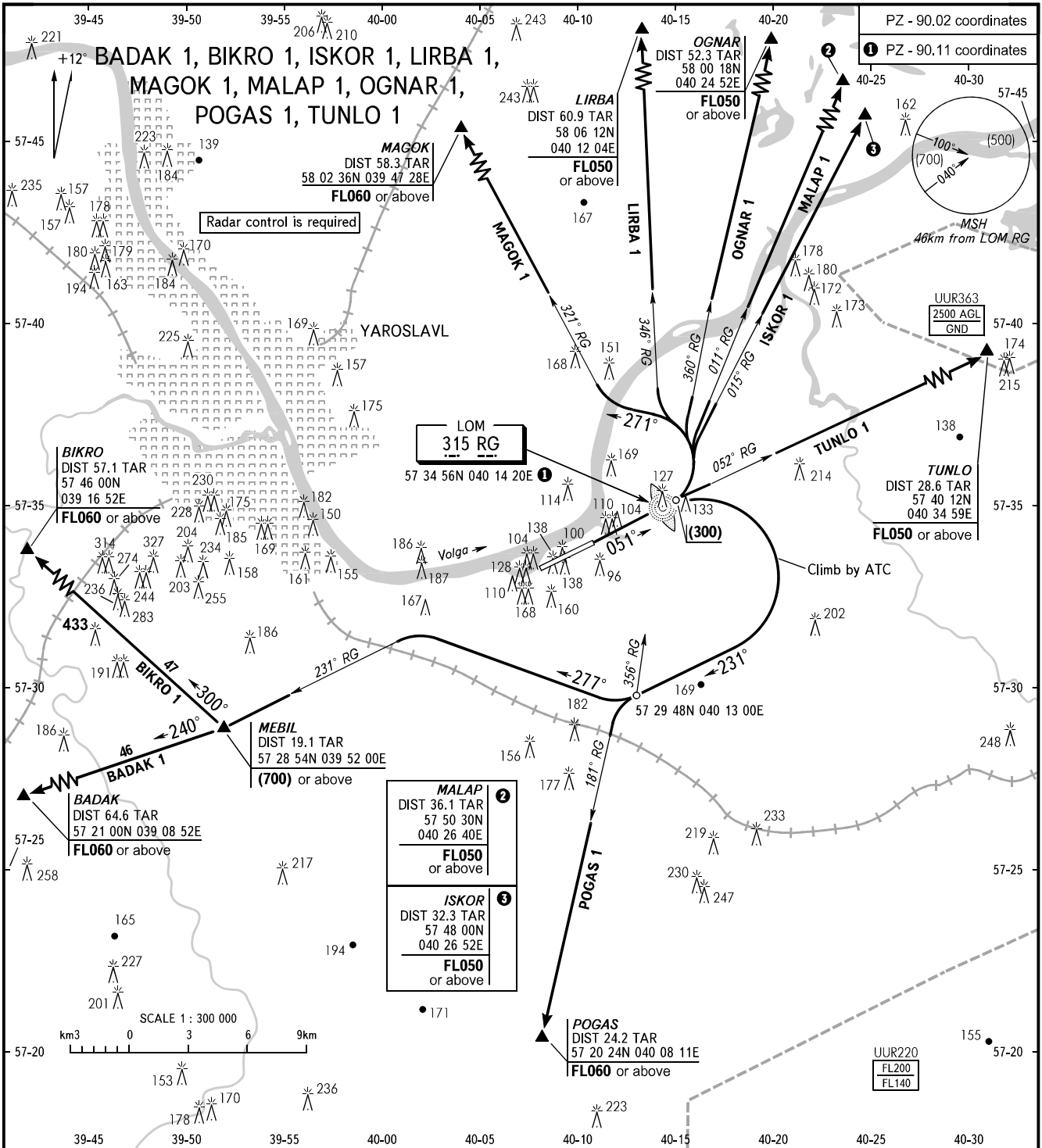


STANDARD DEPARTURE CHART
INSTRUMENT (SID) - ICAO

TRANSITION
HEIGHT : (700)

YAROSLAVL, RUSSIA
TUNOSHNA
RWY 05



GROUND SPEED		km/h	140	185	280	330	370	460	555
MNM rate of climb to FL050 for SID:	MALAP 1 (Grad 4%)	m/s	1.6	2.1	3.1	3.7	4.1	5.1	6.2
	ISKOR 1 (Grad 4.4%)	m/s	1.7	2.3	3.4	4.1	4.6	5.7	6.9
	TUNLO 1 (Grad 5.4%)	m/s	2.1	2.8	4.2	5.0	5.6	7.0	8.4
MNM rate of climb for all other SID (Grad 3.3%):		m/s	1.3	1.7	2.5	3.1	3.4	4.2	5.1

YAROSLAVL TOWER 120.300

WARNING:

- SID MALAP 1, OGNAR 1 shall be used by coordination with the adjacent ATS unit and ACC with further reaching FL210 or above.
- SID TUNLO 1 shall be used when restricted areas UUR363, UUR220, UUR224 are not active and by coordination with the adjacent ATS unit and ACC with further reaching FL210 or above.
- The initial turn after take-off on heading 052° MAG shall be carried out at height (300) not earlier than passing LOM RG.

BEARINGS AND TRACKS ARE MAGNETIC
ALTITUDES, HEIGHTS AND ELEVATIONS ARE IN METRES
DISTANCES ARE IN KILOMETRES

CHANGE: New chart