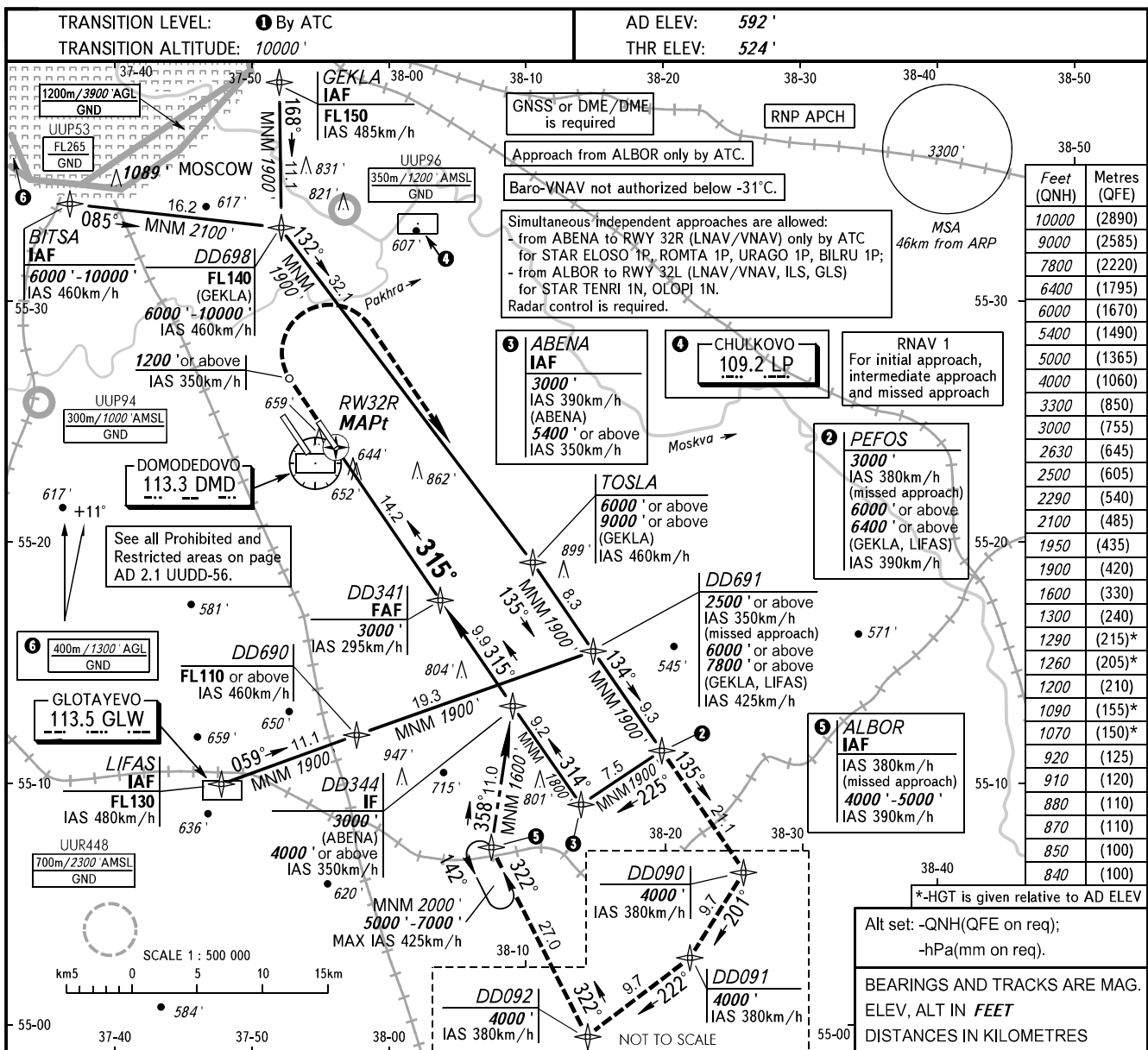


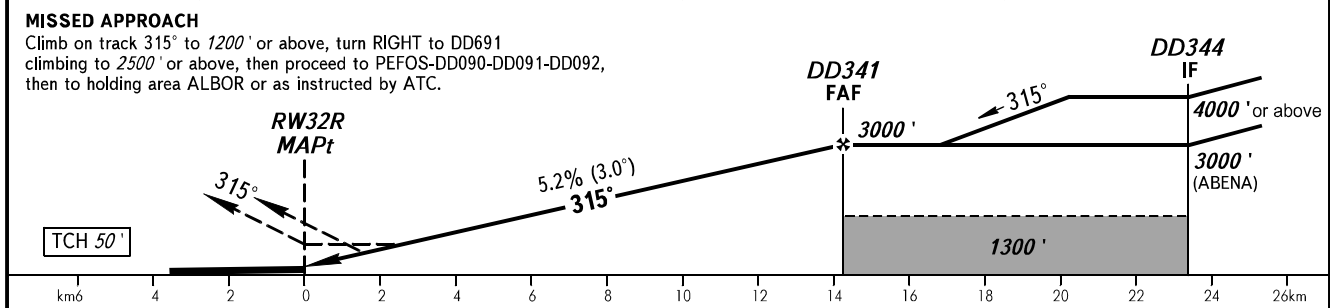
**INSTRUMENT
APPROACH
CHART - ICAO**

**MOSCOW, RUSSIA
DOMODEDOVO
RNP RWY 32R**

ARRIVAL	Sector A6	125.300
	Sector A8	129.800
	Sector DD1	127.700
	Sector DD2	119.400
TOWER	14L/32R	119.700



DIST to RW32R	2.0	4.0	6.0	8.0	10.0	12.0	14.2
ALTITUDE	920'	1260'	1600'	1950'	2290'	2630'	3000'



OCA(H)		A	B	C	D	① TRANSITION LEVEL:										
Straight-in Approach	LNAV	910' (385')	910' (385')	910' (385')	910' (385')	- FL110 when QNH is 1013 hPa (760mm mercury column) or above;										
	LNAV/VNAV	840' (320')	850' (330')	870' (350')	880' (360')	- FL120 when QNH is 977 hPa (733mm mercury column) or above, but less than 1013 hPa (760mm mercury column);										
Circling		1070' (480')	1090' (500')	1260' (670')	1290' (700')	- FL130 when QNH is less than 977 hPa (733mm mercury column).										
GROUND SPEED		km/h	150	180	210	240	270	300	330	360	390	420	450			
RATE OF DESCENT		m/s	2.2	2.6	3.0	3.5	3.9	4.3	4.8	5.2	5.6	6.1	6.5			
		ft/min	427	512	597	683	768	853	939	1024	1109	1195	1280			