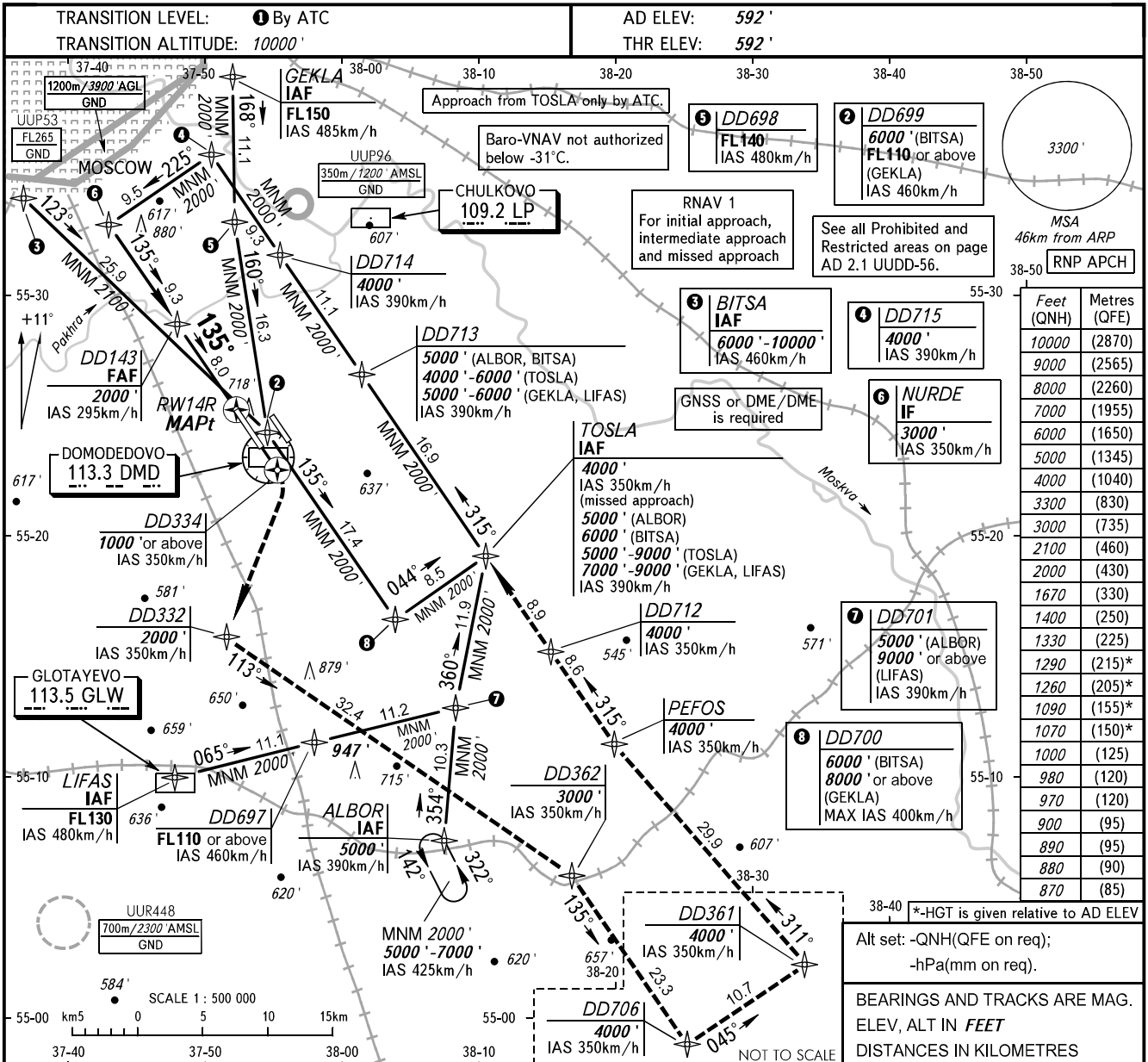


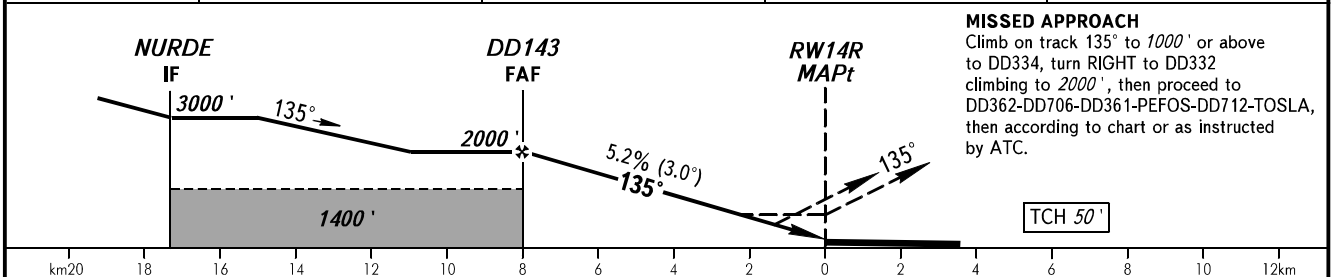
**INSTRUMENT
APPROACH
CHART - ICAO**

ARRIVAL	Sector A6	125.300
	Sector A8	129.800
	Sector DD1	127.700
	Sector DD2	119.400
TOWER	14R/32L	118.600

**MOSCOW, RUSSIA
DOMODEDOVO
RNP RWY 14R**



DIST to RW14R	7.8	6.0	4.0	2.0
ALTITUDE	2000'	1670'	1330'	980'



MISSED APPROACH
Climb on track 135° to 1000' or above to DD334, turn RIGHT to DD332 climbing to 2000', then proceed to DD362-DD706-DD361-PEFOS-DD712-TOSLA, then according to chart or as instructed by ATC.

OCA(H)		A	B	C	D	① TRANSITION LEVEL:									
Straight-in Approach	LNAV	970' (380')	970' (380')	970' (380')	970' (380')	- FL110 when QNH is 1013 hPa (760mm mercury column) or above;									
	LNAV/VNAV	870' (270')	880' (280')	890' (290')	900' (300')	- FL120 when QNH is 977 hPa (733mm mercury column) or above, but less than 1013 hPa (760mm mercury column);									
Circling		1070' (480')	1090' (500')	1260' (670')	1290' (700')	- FL130 when QNH is less than 977 hPa (733mm mercury column).									
GROUND SPEED		km/h	150	180	210	240	270	300	330	360	390	420	450		
RATE OF DESCENT		m/s	2.2	2.6	3.0	3.5	3.9	4.3	4.8	5.2	5.6	6.1	6.5		
		ft/min	427	512	597	683	768	853	939	1024	1109	1195	1280		