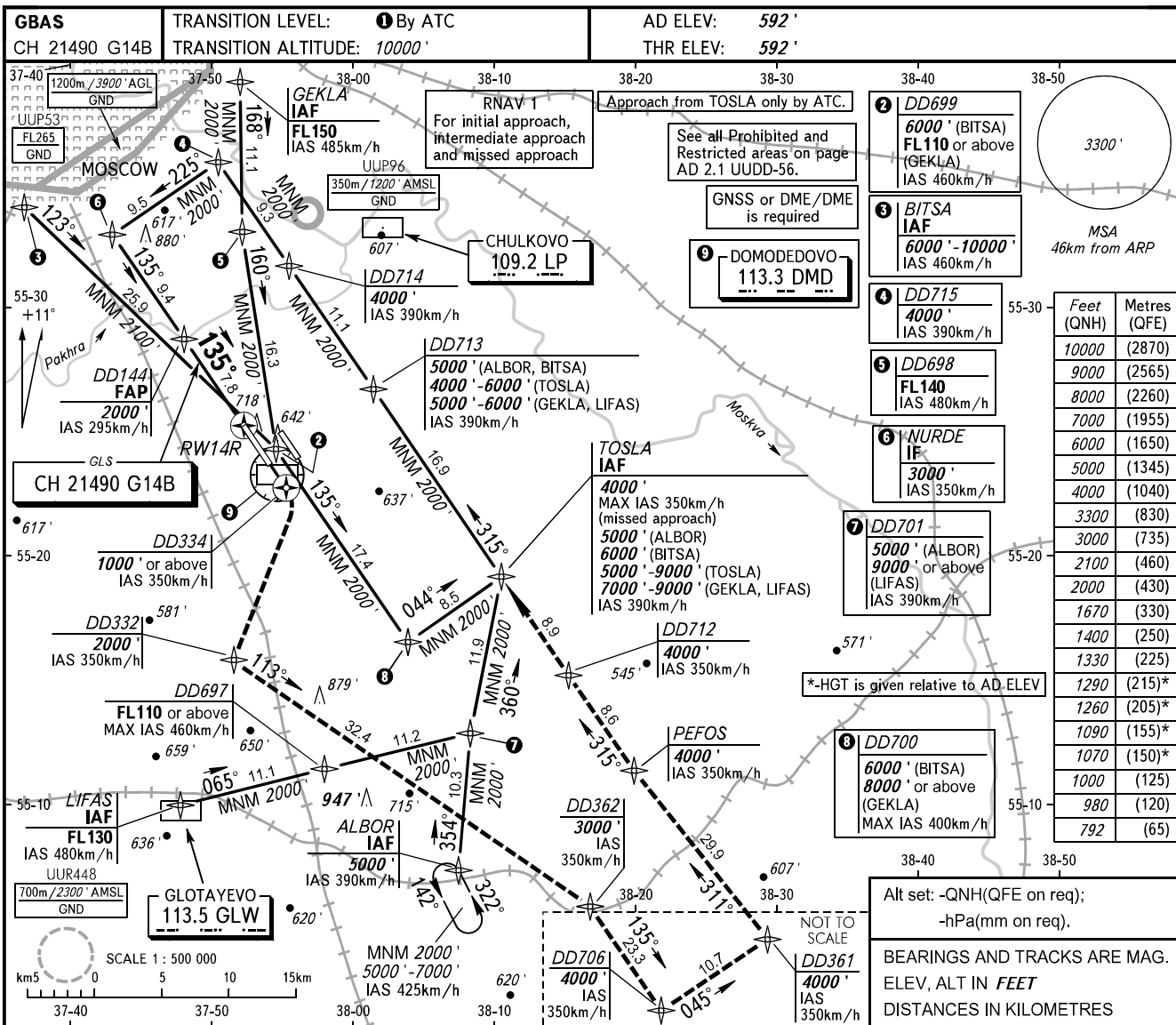


**INSTRUMENT
APPROACH
CHART - ICAO**

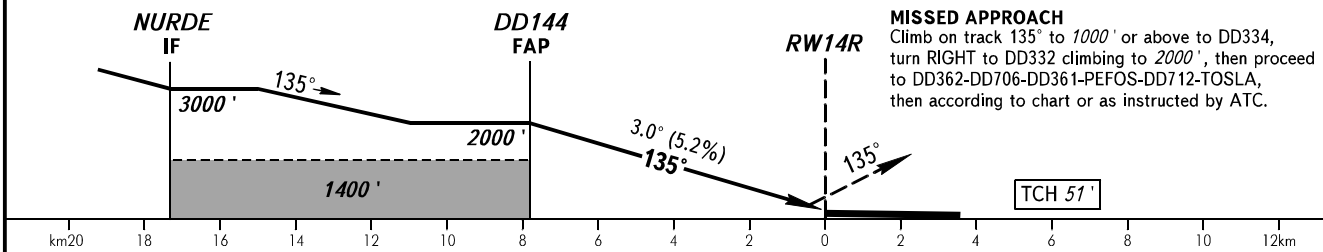
ARRIVAL	Sector A6	125.300
	Sector A8	129.800
	Sector DD1	127.700
	Sector DD2	119.400
TOWER	14R/32L	118.600

**MOSCOW, RUSSIA
DOMODEDOVO
GLS RWY 14R**



Feet (QNH)	Metres (QFE)
10000	(2870)
9000	(2565)
8000	(2260)
7000	(1955)
6000	(1650)
5000	(1345)
4000	(1040)
3300	(830)
3000	(735)
2100	(460)
2000	(430)
1670	(330)
1400	(250)
1330	(225)
1290	(215)*
1260	(205)*
1090	(155)*
1070	(150)*
1000	(125)
980	(120)
792	(65)

DIST to RW14R	7.8	6.0	4.0	2.0
ALTITUDE	2000'	1670'	1330'	980'



OCA(H)	A				B				C				D			
	CAT I				CAT I				CAT I				CAT I			
Straight-in Approach	792' (200')				792' (200')				792' (200')				792' (200')			
Circling	1070' (480')				1090' (500')				1260' (670')				1290' (700')			
GROUND SPEED	km/h	150	180	210	240	270	300	330	360	390	420	450				
RATE OF DESCENT	m/s	2.2	2.6	3.0	3.5	3.9	4.3	4.8	5.2	5.6	6.1	6.5				
RATE OF DESCENT	ft/min	427	512	597	683	768	853	939	1024	1109	1195	1280				

TRANSITION LEVEL:
 - FL110 when QNH is 1013 hPa (760mm mercury column) or above;
 - FL120 when QNH is 977 hPa (733mm mercury column) or above, but less than 1013 hPa (760mm mercury column);
 - FL130 when QNH is less than 977 hPa (733mm mercury column).

CHANGE: New chart