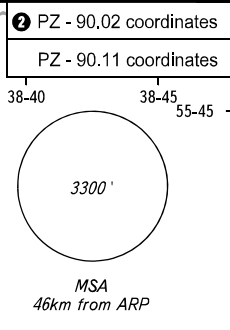


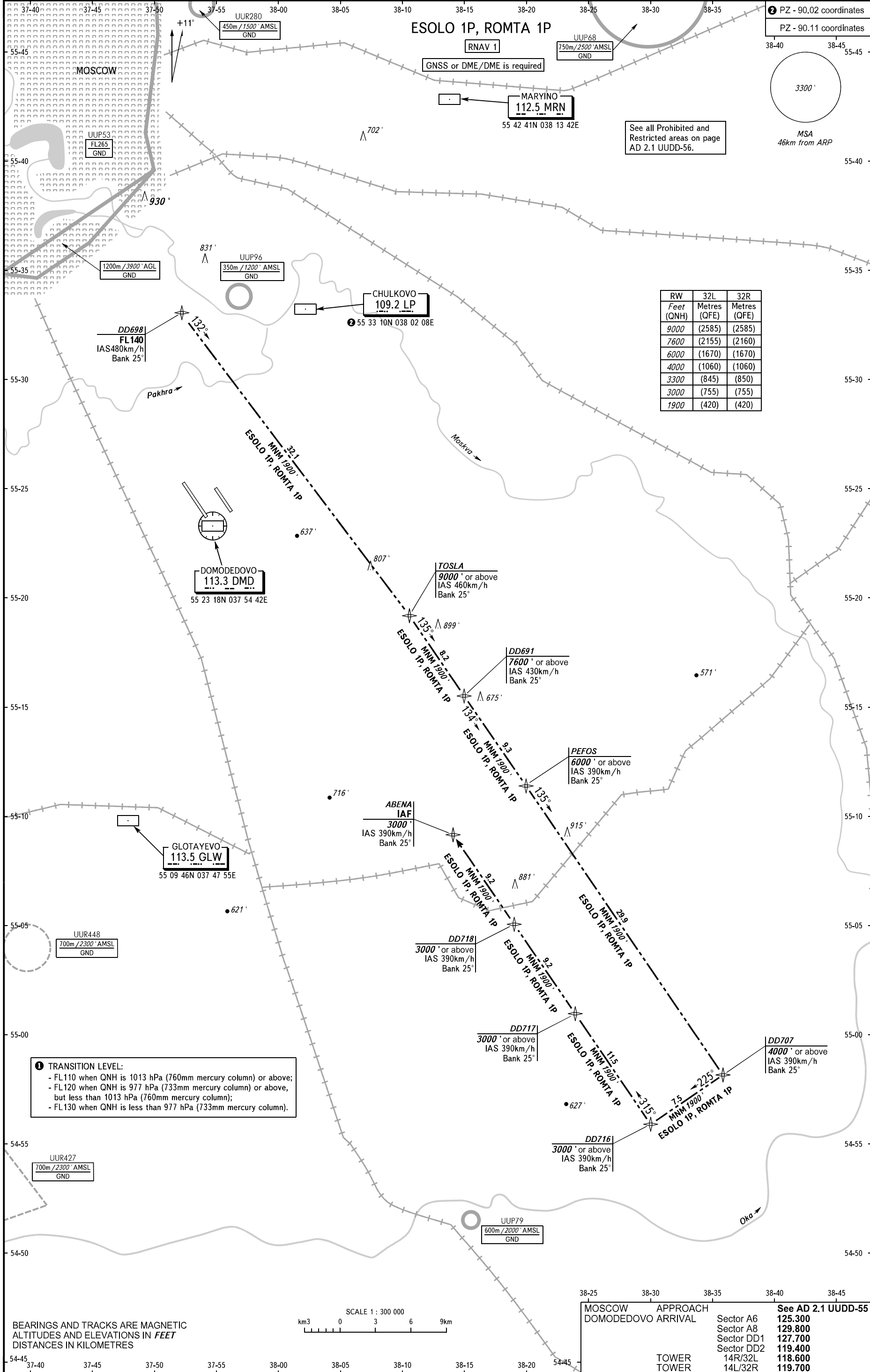
# ESOLO 1P, ROMTA 1P



See all Prohibited and Restricted areas on page AD 2.1 UDD-56.

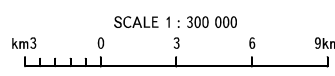
RNAV 1  
GNSS or DME/DME is required

RW	32L	32R
Feet (QNH)	Metres (QFE)	Metres (QFE)
9000	(2585)	(2585)
7600	(2155)	(2160)
6000	(1670)	(1670)
4000	(1060)	(1060)
3300	(845)	(850)
3000	(755)	(755)
1900	(420)	(420)



**TRANSITION LEVEL:**

- FL110 when QNH is 1013 hPa (760mm mercury column) or above;
- FL120 when QNH is 977 hPa (733mm mercury column) or above, but less than 1013 hPa (760mm mercury column);
- FL130 when QNH is less than 977 hPa (733mm mercury column).



BEARINGS AND TRACKS ARE MAGNETIC  
ALTITUDES AND ELEVATIONS IN FEET  
DISTANCES IN KILOMETRES

MOSCOW APPROACH	DOMODEDOVO ARRIVAL	TOWER	TOWER
Sector A6	See AD 2.1 UDD-55	14R/32L	118.600
Sector A8		14L/32R	119.700
Sector DD1			
Sector DD2			