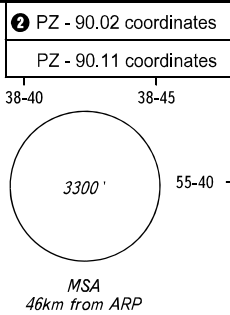


STANDARD ARRIVAL CHART
INSTRUMENT (STAR) - ICAO

TRANSITION
LEVEL: By ATC

MOSCOW, RUSSIA
DOMODEDOVO
RNAV Rwy 32R, 32L

ESOLO 1N, ROMTA 1N



RW	32L	32R
Feet (QNH)	Metres (QFE)	Metres (QFE)
9000	(2585)	(2585)
8000	(2280)	(2280)
5000	(1365)	(1365)
3300	(845)	(850)
2000	(450)	(450)
1900	(420)	(420)
1800	(390)	(390)
1700	(360)	(360)

RNAV 1
GNSS or DME/DME is required

See all Prohibited and Restricted areas on page AD 2.1 UDD-56.

MARYINO
112.5 MRN
55 42 41N 038 13 42E

CHULKOVO
109.2 LP
55 33 10N 038 02 08E

DOMODEDOVO
113.3 DMD
55 23 18N 037 54 42E

GLOTAYEVO
113.5 GLW
55 09 46N 037 47 55E

ALBOR IAF
5000'
IAS 390km/h
Bank 25°

PEFOS
7000'
IAS 390km/h
Bank 25°

DD090
5000'
IAS 390km/h
Bank 25°

DD091
5000'
IAS 390km/h
Bank 25°

DD092
5000'
IAS 390km/h
Bank 25°

DD093
5000'
IAS 390km/h
Bank 25°

DD094
5000'
IAS 390km/h
Bank 25°

DD095
5000'
IAS 390km/h
Bank 25°

DD698
FL 140
IAS 480km/h
Bank 25°

DD691
8000'
IAS 430km/h
Bank 25°

TOSLA
9000'
IAS 460km/h
Bank 25°

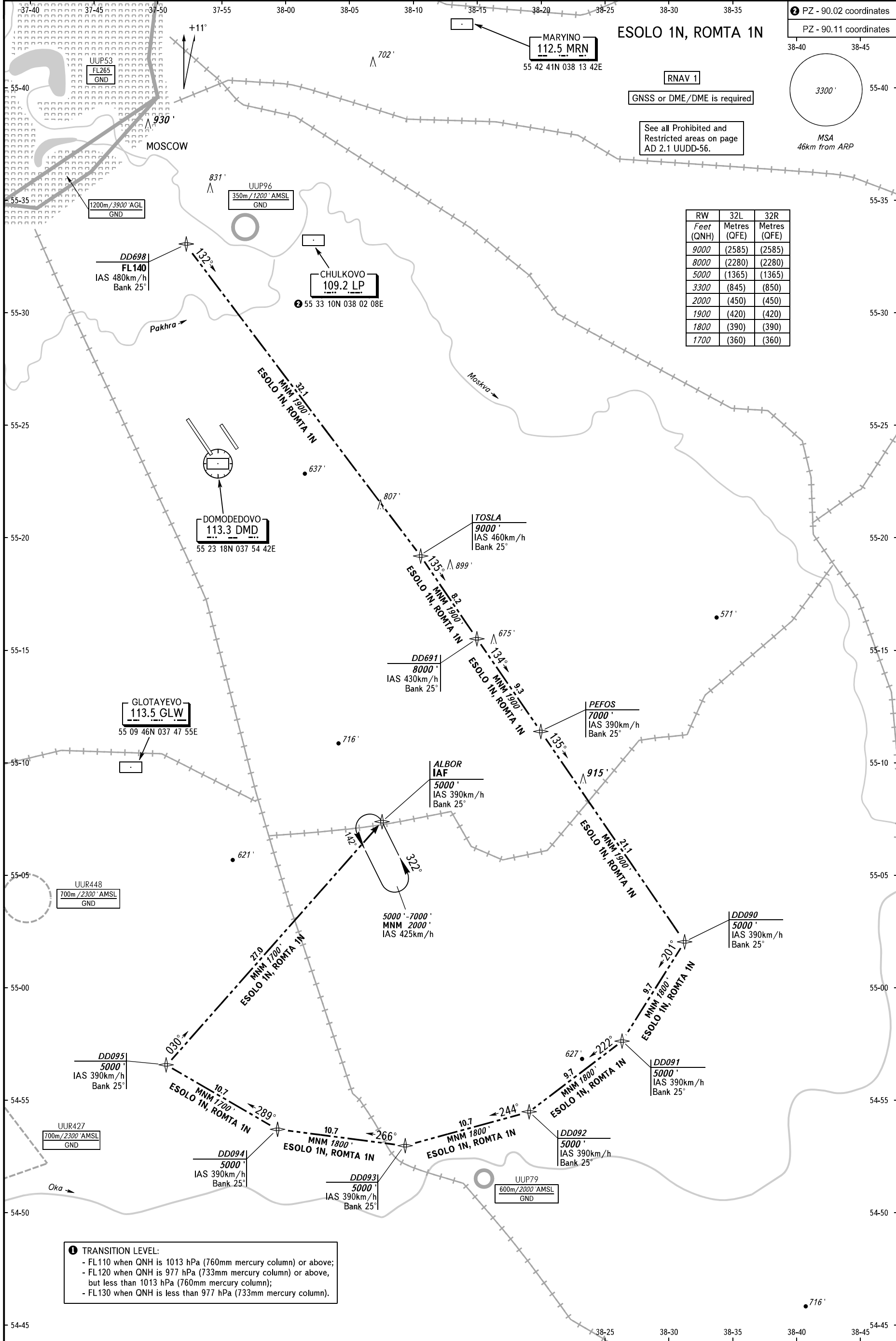
UUP53
FL 265
GND

UUP96
350m / 1200' AMSL
GND

UUP79
600m / 2000' AMSL
GND

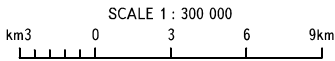
UUR448
700m / 2300' AMSL
GND

UUR427
700m / 2300' AMSL
GND



TRANSITION LEVEL:

- FL110 when QNH is 1013 hPa (760mm mercury column) or above;
- FL120 when QNH is 977 hPa (733mm mercury column) or above, but less than 1013 hPa (760mm mercury column);
- FL130 when QNH is less than 977 hPa (733mm mercury column).



BEARINGS AND TRACKS ARE MAGNETIC
ALTITUDES AND ELEVATIONS IN FEET
DISTANCES IN KILOMETRES

MOSCOW APPROACH	DOMODEDOVO ARRIVAL	Sector	Elevation
		Sector A6	125.300
		Sector A8	129.800
		Sector DD1	127.700
		Sector DD2	119.400
		14R/32L	118.600
		14L/32R	119.700
TOWER			
TOWER			

CHANGE: New chart