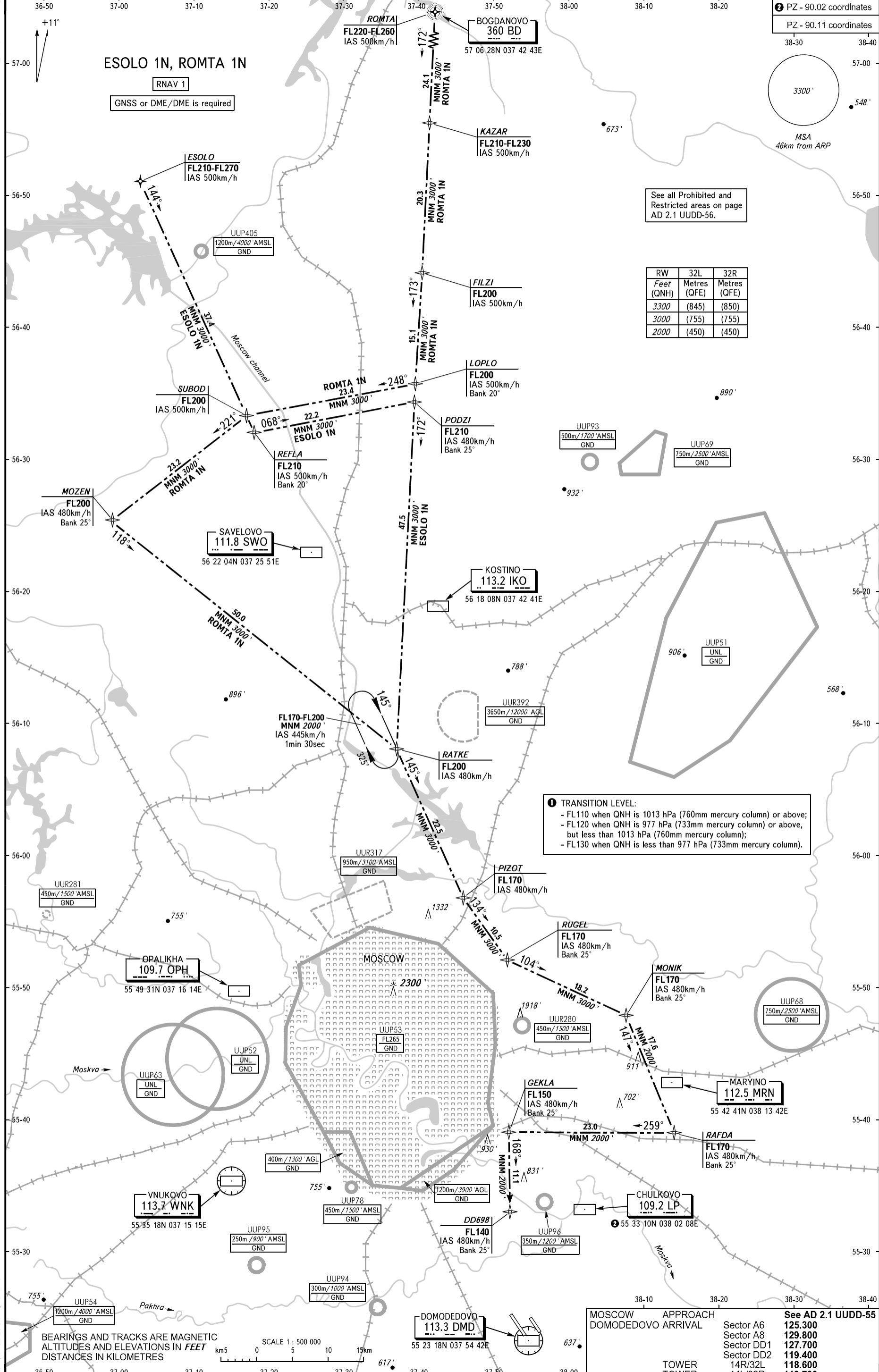
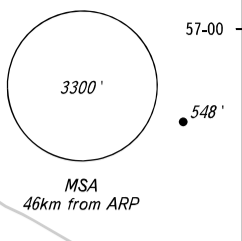


TRANSITION  
LEVEL: BY ATC



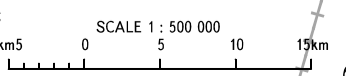
PZ - 90.02 coordinates  
PZ - 90.11 coordinates



RW	32L	32R
Feet (QNH)	Metres (QFE)	Metres (QFE)
3300	(845)	(850)
3000	(755)	(755)
2000	(450)	(450)

**1** TRANSITION LEVEL:  
 - FL110 when QNH is 1013 hPa (760mm mercury column) or above;  
 - FL120 when QNH is 977 hPa (733mm mercury column) or above, but less than 1013 hPa (760mm mercury column);  
 - FL130 when QNH is less than 977 hPa (733mm mercury column).

BEARINGS AND TRACKS ARE MAGNETIC  
ALTITUDES AND ELEVATIONS IN FEET  
DISTANCES IN KILOMETRES



MOSCOW APPROACH DOMODEDOVO ARRIVAL	See AD 2.1 UDD-55
Sector A6	125.300
Sector A8	129.800
Sector DD1	127.700
Sector DD2	119.400
TOWER 14R/32L	118.600
TOWER 14L/32R	119.700