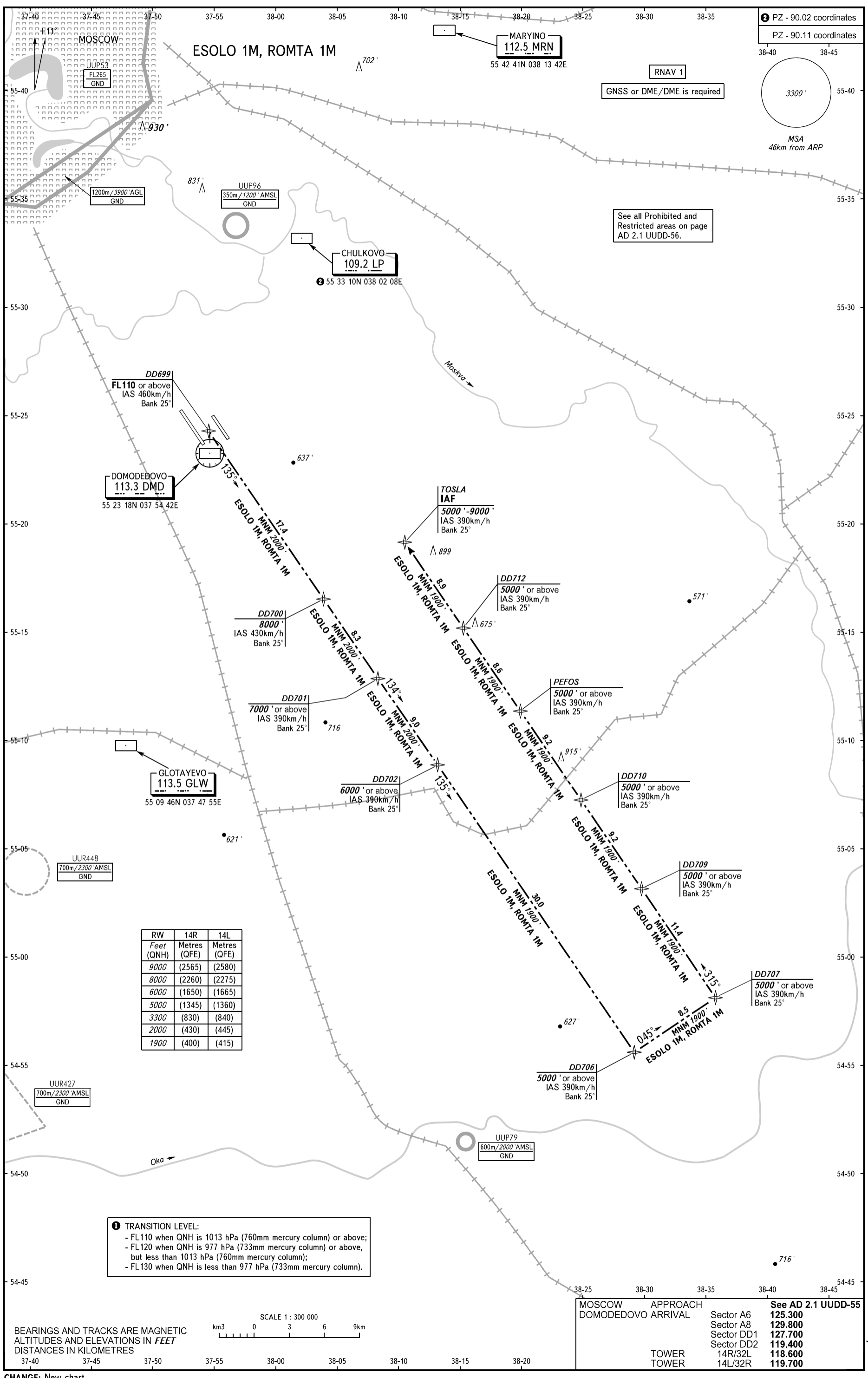


STANDARD ARRIVAL CHART
INSTRUMENT (STAR) - ICAO
TRANSITION LEVEL: BY ATC 1



PZ - 90.02 coordinates
PZ - 90.11 coordinates

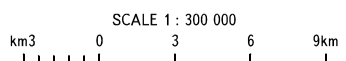
3300'
MSA
46km from ARP

RNAV 1
GNSS or DME/DME is required

See all Prohibited and Restricted areas on page AD 2.1 UDD-56.

RW	14R	14L
Feet (QNH)	Metres (QFE)	Metres (QFE)
9000	(2565)	(2580)
8000	(2260)	(2275)
6000	(1650)	(1665)
5000	(1345)	(1360)
3300	(830)	(840)
2000	(430)	(445)
1900	(400)	(415)

1 TRANSITION LEVEL:
- FL110 when QNH is 1013 hPa (760mm mercury column) or above;
- FL120 when QNH is 977 hPa (733mm mercury column) or above, but less than 1013 hPa (760mm mercury column);
- FL130 when QNH is less than 977 hPa (733mm mercury column).



BEARINGS AND TRACKS ARE MAGNETIC
ALTITUDES AND ELEVATIONS IN FEET
DISTANCES IN KILOMETRES

MOSCOW APPROACH	DOMODEDOVO ARRIVAL		See AD 2.1 UDD-55
	Sector A6		125.300
	Sector A8		129.800
	Sector DD1		127.700
	Sector DD2		119.400
	14R/32L		118.600
	14L/32R		119.700
TOWER			
TOWER			