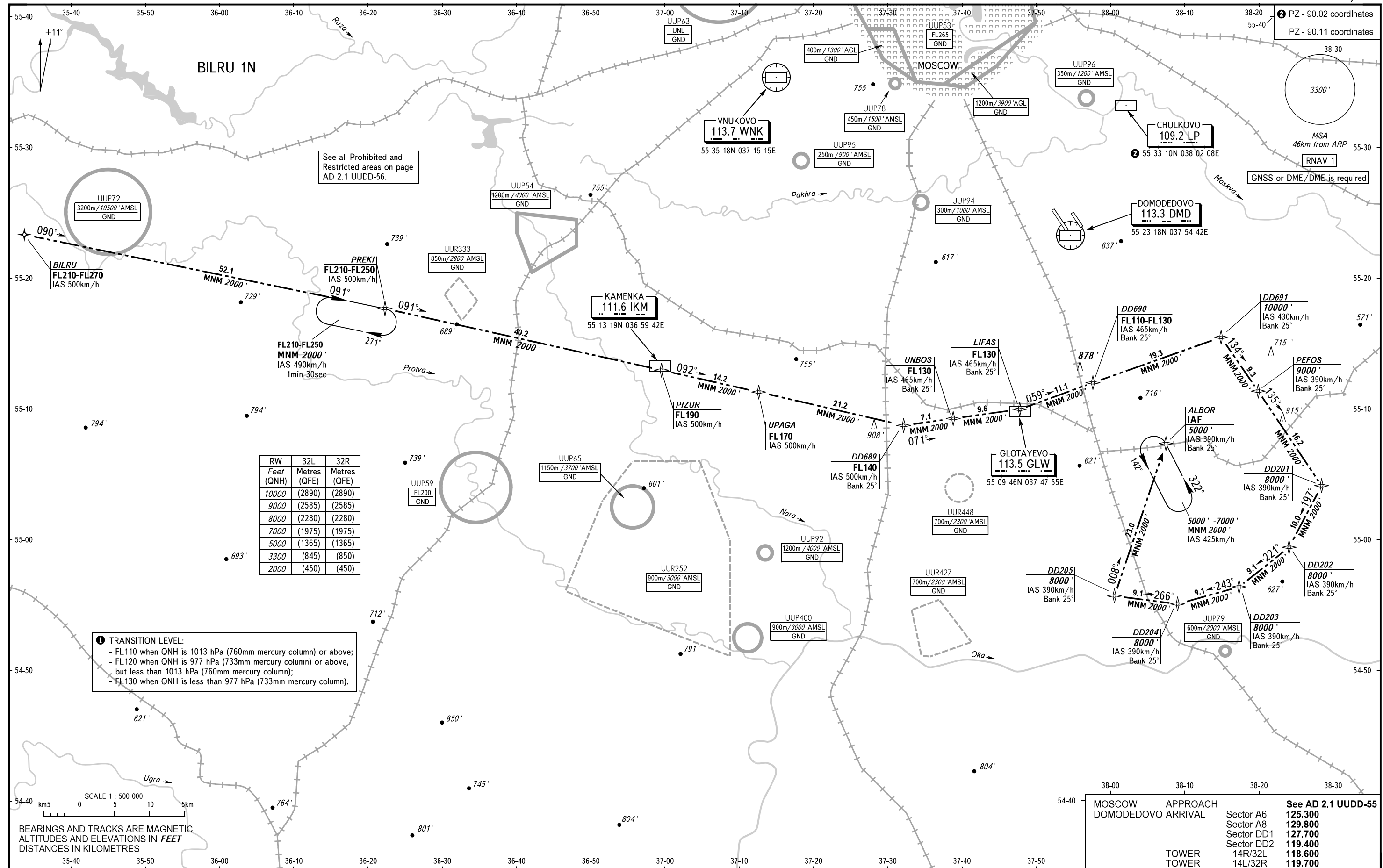


STANDARD ARRIVAL CHART
INSTRUMENT (STAR) - ICAO

TRANSITION
LEVEL : By ATC

MOSCOW, RUSSIA
DOMODEDOVO
RNAV RWY 32R, 32L



See all Prohibited and Restricted areas on page AD 2.1 UDD-56.

PZ - 90.02 coordinates
PZ - 90.11 coordinates

RNAV 1
GNSS or DME/DME is required

RW	32L	32R
Feet (QNH)	Metres (QFE)	Metres (QFE)
10000	(2890)	(2890)
9000	(2585)	(2585)
8000	(2280)	(2280)
7000	(1975)	(1975)
5000	(1365)	(1365)
3300	(845)	(850)
2000	(450)	(450)

TRANSITION LEVEL:

- FL110 when QNH is 1013 hPa (760mm mercury column) or above;
- FL120 when QNH is 977 hPa (733mm mercury column) or above, but less than 1013 hPa (760mm mercury column);
- FL130 when QNH is less than 977 hPa (733mm mercury column).

SCALE 1 : 500 000
0 5 10 15 km

BEARINGS AND TRACKS ARE MAGNETIC
ALTITUDES AND ELEVATIONS IN FEET
DISTANCES IN KILOMETRES

MOSCOW APPROACH	DOMODEDOVO ARRIVAL	Sector A6	Sector A8	Sector DD1	Sector DD2	14R/32L	14L/32R
		125.300	129.800	127.700	119.400	118.600	119.700
	TOWER						
	TOWER						

CHANGE: New chart