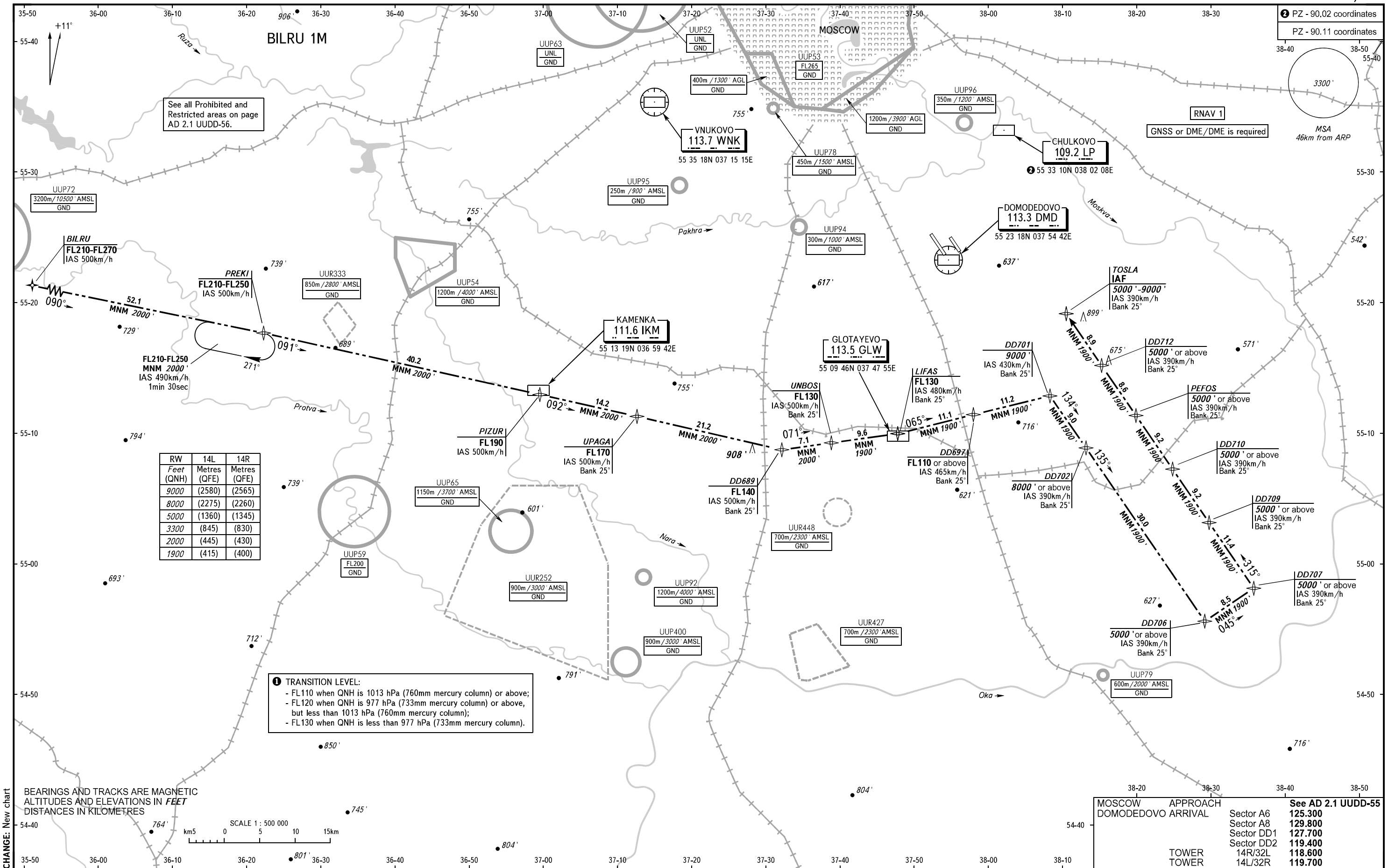


STANDARD ARRIVAL CHART  
INSTRUMENT (STAR) - ICAO

TRANSITION  
LEVEL: By ATC ①

MOSCOW, RUSSIA  
DOMODEDOVO  
RNAV RWY 14R, 14L

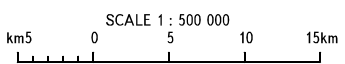


See all Prohibited and Restricted areas on page AD 2.1 UDD-56.

RW	14L	14R
Feet (QNH)	Metres (QFE)	Metres (QFE)
9000	(2580)	(2565)
8000	(2275)	(2260)
5000	(1360)	(1345)
3300	(845)	(830)
2000	(445)	(430)
1900	(415)	(400)

① TRANSITION LEVEL:  
 - FL110 when QNH is 1013 hPa (760mm mercury column) or above;  
 - FL120 when QNH is 977 hPa (733mm mercury column) or above, but less than 1013 hPa (760mm mercury column);  
 - FL130 when QNH is less than 977 hPa (733mm mercury column).

BEARINGS AND TRACKS ARE MAGNETIC  
ALTITUDES AND ELEVATIONS IN FEET  
DISTANCES IN KILOMETRES



MOSCOW APPROACH	DOMODEDOVO ARRIVAL	Sector	Altitude
		Sector A6	See AD 2.1 UDD-55
		Sector A8	129.800
		Sector DD1	127.700
		Sector DD2	119.400
		14R/32L	118.600
		14L/32R	119.700
TOWER			
TOWER			