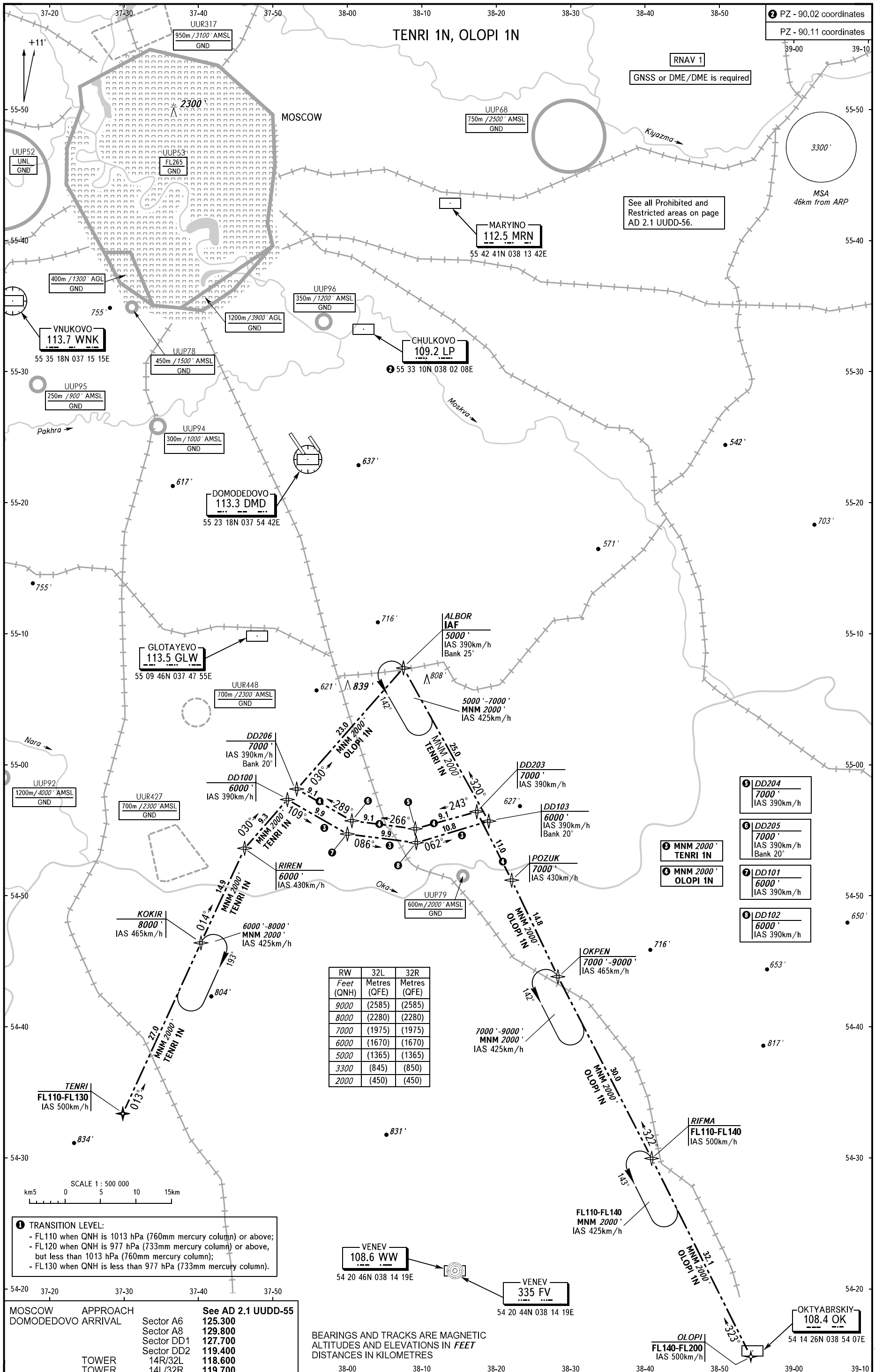


TENRI 1N, OLOPI 1N



PZ - 90.02 coordinates
PZ - 90.11 coordinates

RNAV 1
GNSS or DME/DME is required

See all Prohibited and Restricted areas on page AD 2.1 UDD-56.

3300'
MSA
46km from ARP

MARYINO
112.5 MRN
55 42 41N 038 13 42E

CHULKOVO
109.2 LP
55 33 10N 038 02 08E

DOMODEDOVO
113.3 DMD
55 23 18N 037 54 42E

GLOTAYEVO
113.5 GLW
55 09 46N 037 47 55E

ALBOR IAF
5000'
IAS 390km/h
Bank 25°

DD204
7000'
IAS 390km/h

DD205
7000'
IAS 390km/h
Bank 20°

DD101
6000'
IAS 390km/h

DD102
6000'
IAS 390km/h

MNM 2000'
TENRI 1N

MNM 2000'
OLOPI 1N

RW	32L	32R
Feet (QNH)	Metres (QFE)	Metres (QFE)
9000	(2585)	(2585)
8000	(2280)	(2280)
7000	(1975)	(1975)
6000	(1670)	(1670)
5000	(1365)	(1365)
3300	(845)	(850)
2000	(450)	(450)

TRANSITION LEVEL:
- FL110 when QNH is 1013 hPa (760mm mercury column) or above;
- FL120 when QNH is 977 hPa (733mm mercury column) or above, but less than 1013 hPa (760mm mercury column);
- FL130 when QNH is less than 977 hPa (733mm mercury column).

MOSCOW APPROACH	See AD 2.1 UDD-55
DOMODEDOVO ARRIVAL Sector A6	125.300
Sector A8	129.800
Sector DD1	127.700
Sector DD2	119.400
TOWER 14R/32L	118.600
TOWER 14L/32R	119.700

BEARINGS AND TRACKS ARE MAGNETIC
ALTITUDES AND ELEVATIONS IN FEET
DISTANCES IN KILOMETRES

MOSCOW, RUSSIA
DOMODEDOVO
RNAV RMY 32R, 32L