

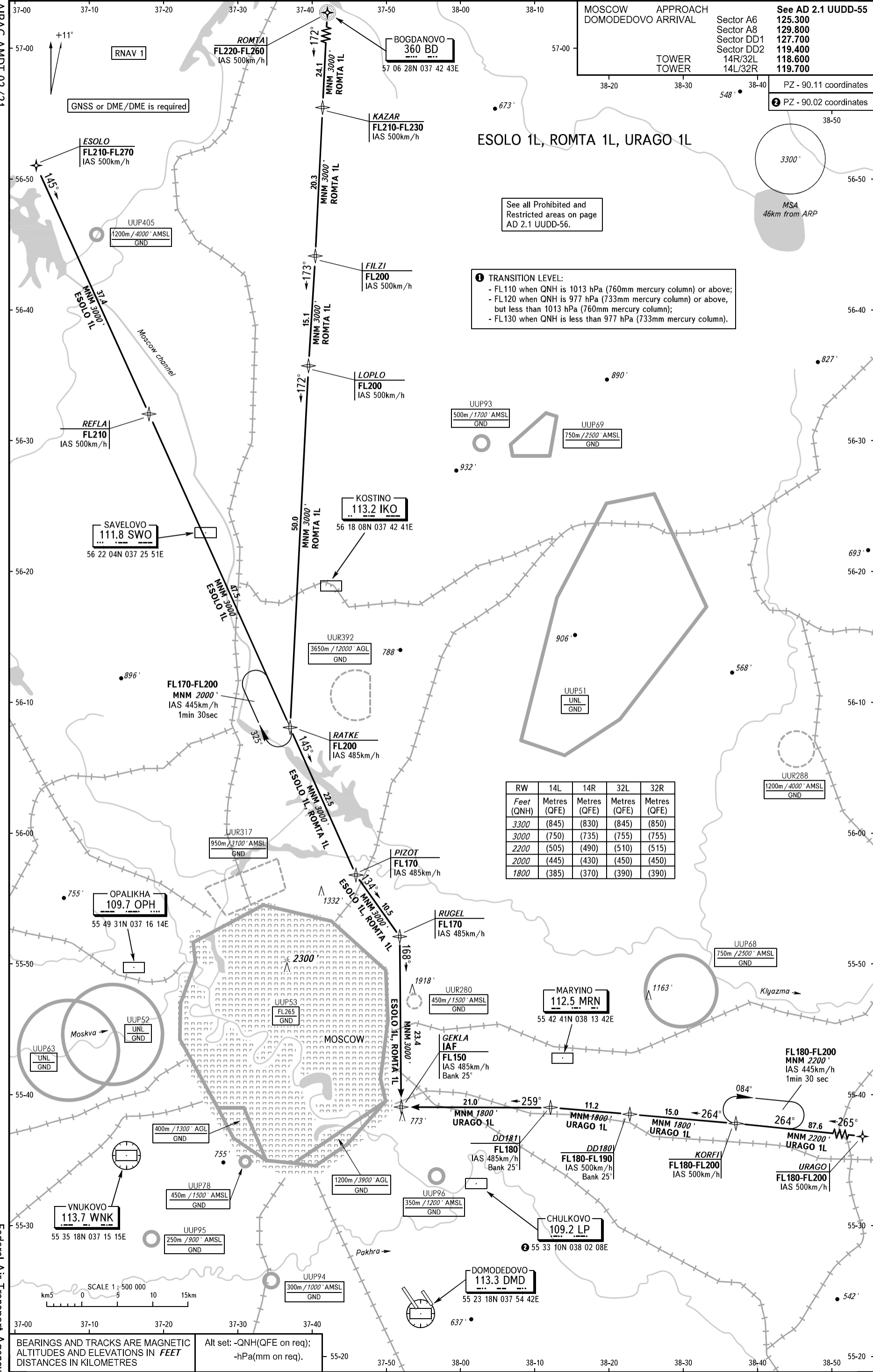
MOSCOW DOMODEDOVO	APPROACH ARRIVAL	See AD 2.1 UDD-55
	Sector A6	125.300
	Sector A8	129.800
	Sector DD1	127.700
	Sector DD2	119.400
	14R/32L	118.600
	14L/32R	119.700
TOWER TOWER		PZ - 90.11 coordinates
		PZ - 90.02 coordinates

ESOLO 1L, ROMTA 1L, URAGO 1L

See all Prohibited and Restricted areas on page AD 2.1 UDD-56.

1 TRANSITION LEVEL:
- FL110 when QNH is 1013 hPa (760mm mercury column) or above;
- FL120 when QNH is 977 hPa (733mm mercury column) or above, but less than 1013 hPa (760mm mercury column);
- FL130 when QNH is less than 977 hPa (733mm mercury column).

RW	14L	14R	32L	32R
Feet (QNH)	Metres (QFE)	Metres (QFE)	Metres (QFE)	Metres (QFE)
3300	(845)	(830)	(845)	(850)
3000	(750)	(735)	(755)	(755)
2200	(505)	(490)	(510)	(515)
2000	(445)	(430)	(450)	(450)
1800	(385)	(370)	(390)	(390)



BEARINGS AND TRACKS ARE MAGNETIC
ALTITUDES AND ELEVATIONS IN FEET
DISTANCES IN KILOMETRES

Alt set: -QNH(QFE on req);
-hPa(mm on req).

CHANGE: RWY 14L/32R, 14R/32L