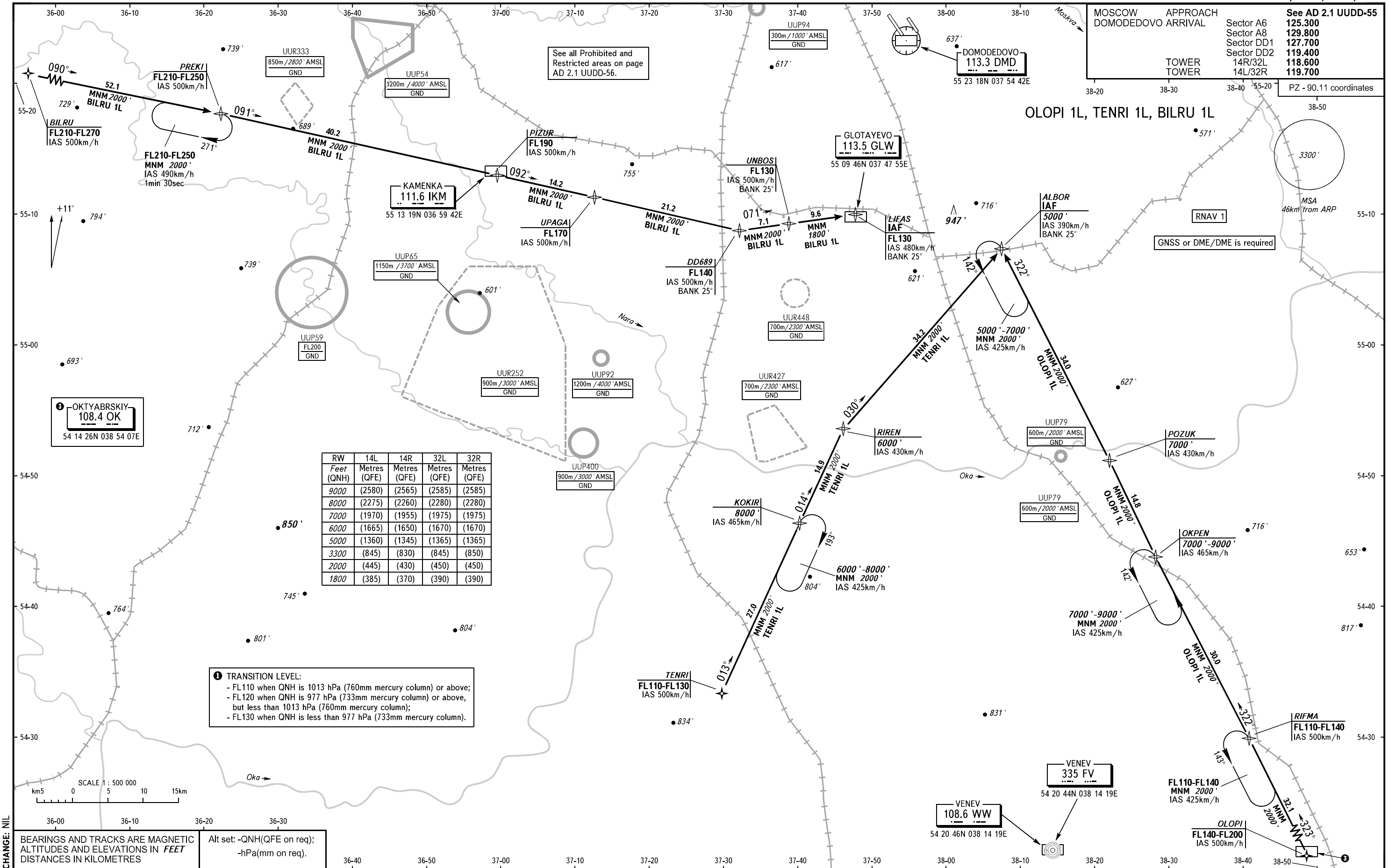


STANDARD ARRIVAL CHART
INSTRUMENT (STAR) - ICAO

TRANSITION
LEVEL: By ATC ①

MOSCOW, RUSSIA
DOMODEDOVO
RNAV RWY 14L/32R, 14R/32L

MOSCOW DOMODEDOVO APPROACH	See AD 2.1 UDD-55
Sector A6	125.300
Sector A8	129.800
Sector DD1	127.700
Sector DD2	119.400
TOWER	14R/32L 14L/32R
TOWER	118.600 119.700



See all Prohibited and Restricted areas on page AD 2.1 UDD-56.

RW	14L	14R	32L	32R
Feet (QNH)	Metres (QFE)	Metres (QFE)	Metres (QFE)	Metres (QFE)
9000	(2580)	(2565)	(2585)	(2585)
8000	(2275)	(2260)	(2280)	(2280)
7000	(1970)	(1955)	(1975)	(1975)
6000	(1665)	(1650)	(1670)	(1670)
5000	(1360)	(1345)	(1365)	(1365)
3300	(845)	(830)	(845)	(850)
2000	(445)	(430)	(450)	(450)
1800	(385)	(370)	(390)	(390)

① TRANSITION LEVEL:
 - FL110 when QNH is 1013 hPa (760mm mercury column) or above;
 - FL120 when QNH is 977 hPa (733mm mercury column) or above, but less than 1013 hPa (760mm mercury column);
 - FL130 when QNH is less than 977 hPa (733mm mercury column).

SCALE 1 : 500 000
0 5 10 15 km

BEARINGS AND TRACKS ARE MAGNETIC
 ALTITUDES AND ELEVATIONS IN FEET
 DISTANCES IN KILOMETRES

Alt set: -QNH(QFE on req);
 -hPa(mm on req).

CHANGE: NIL