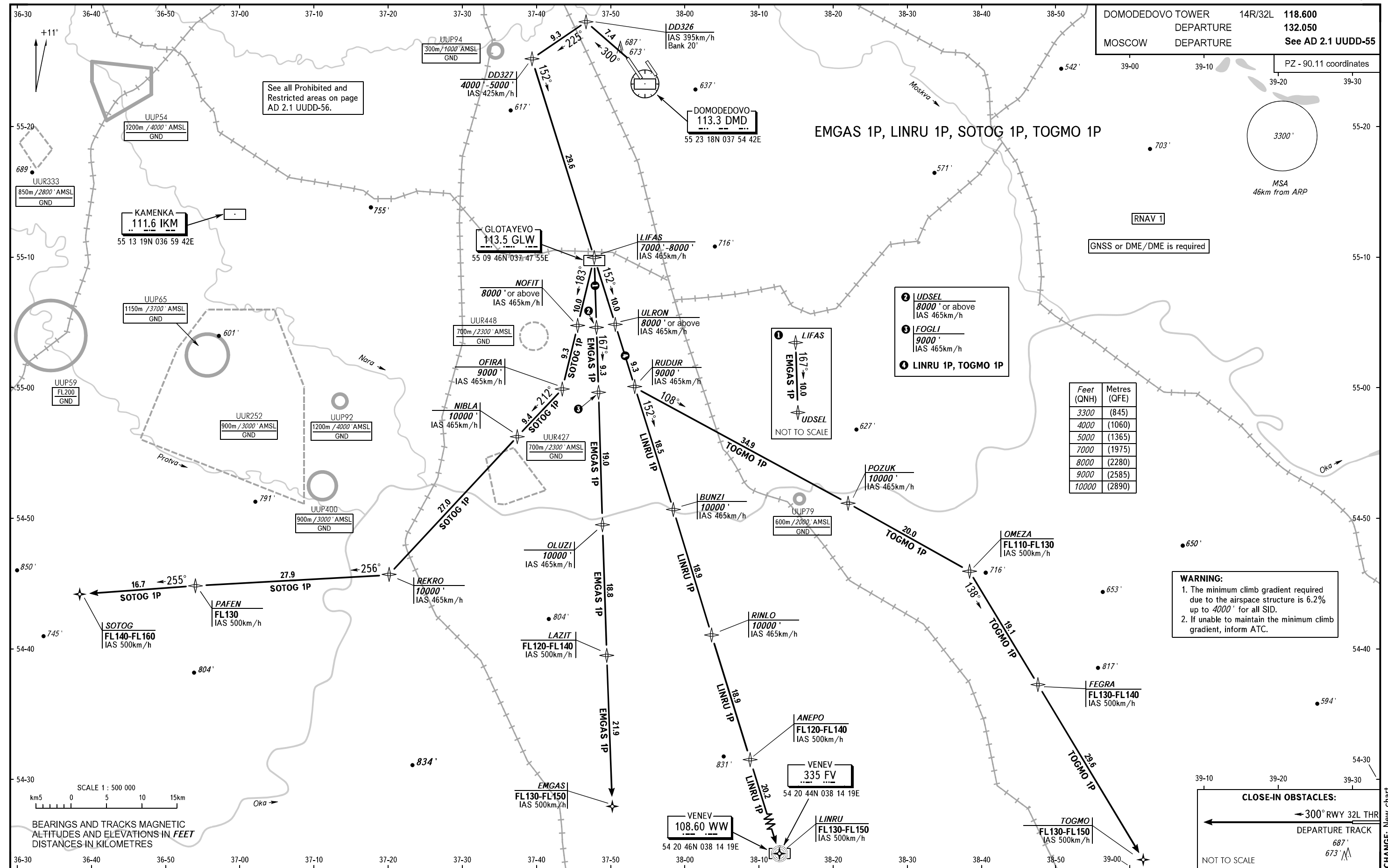


STANDARD DEPARTURE CHART  
INSTRUMENT (SID) - ICAO

TRANSITION  
ALTITUDE : 10000'

MOSCOW, RUSSIA  
DOMODEDOVO  
RNAV RWY 32L

DOMODEDOVO TOWER	14R/32L	118.600
DEPARTURE		132.050
MOSCOW DEPARTURE		See AD 2.1 UDD-55
PZ - 90.11 coordinates		



Feet (QNH)	Metres (QFE)
3300	(845)
4000	(1060)
5000	(1365)
7000	(1975)
8000	(2280)
9000	(2585)
10000	(2890)

**WARNING:**

- The minimum climb gradient required due to the airspace structure is 6.2% up to 4000' for all SID.
- If unable to maintain the minimum climb gradient, inform ATC.

**CLOSE-IN OBSTACLES:**

← 300° RWY 32L THR

DEPARTURE TRACK  
687°  
673°

NOT TO SCALE

CHANGE: New chart