

DOMODEDOVO TOWER 14R/32L 118.600
 DEPARTURE 132.050
 MOSCOW DEPARTURE See AD 2.1 UDD-55

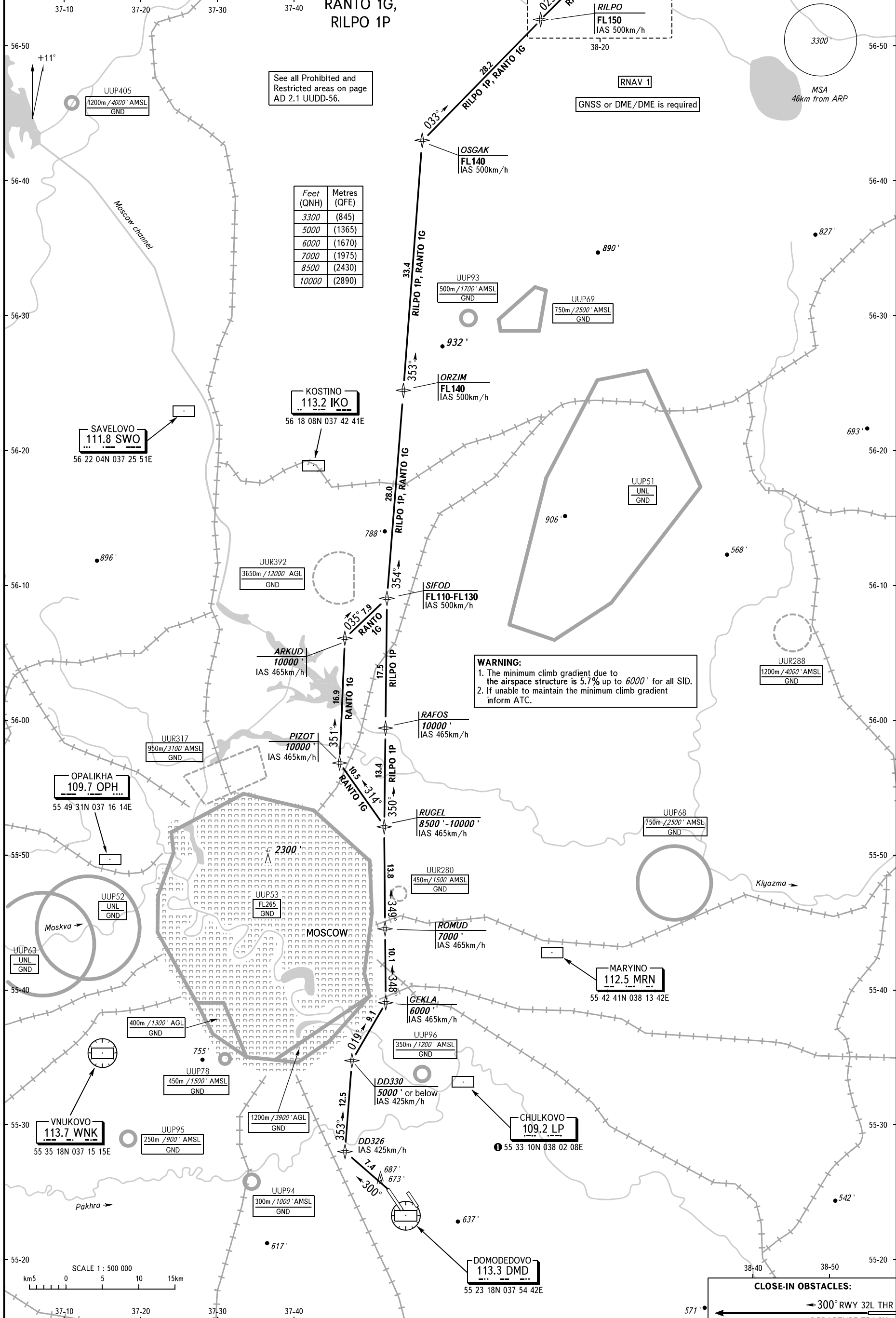
PZ - 90.11 coordinates
 PZ - 90.02 coordinates

RANTO 1G,
 RILPO 1P

See all Prohibited and Restricted areas on page AD 2.1 UDD-56.

Feet (QNH)	Metres (QFE)
3300	(845)
5000	(1365)
6000	(1670)
7000	(1975)
8500	(2430)
10000	(2890)

WARNING:
 1. The minimum climb gradient due to the airspace structure is 5.7% up to 6000' for all SID.
 2. If unable to maintain the minimum climb gradient inform ATC.



BEARINGS AND TRACKS ARE MAGNETIC
 ALTITUDES AND ELEVATIONS IN FEET
 DISTANCES IN KILOMETRES
 Alt set: -QNH(QFE on req);
 -hPa(mm on req).

CLOSE-IN OBSTACLES:
 ← 300° RWY 32L THR
 DEPARTURE TRACK
 687'
 673'
 NOT TO SCALE

CHANGE: NIL

AIRAC AMDT 02/21
 Federal Air Transport Agency