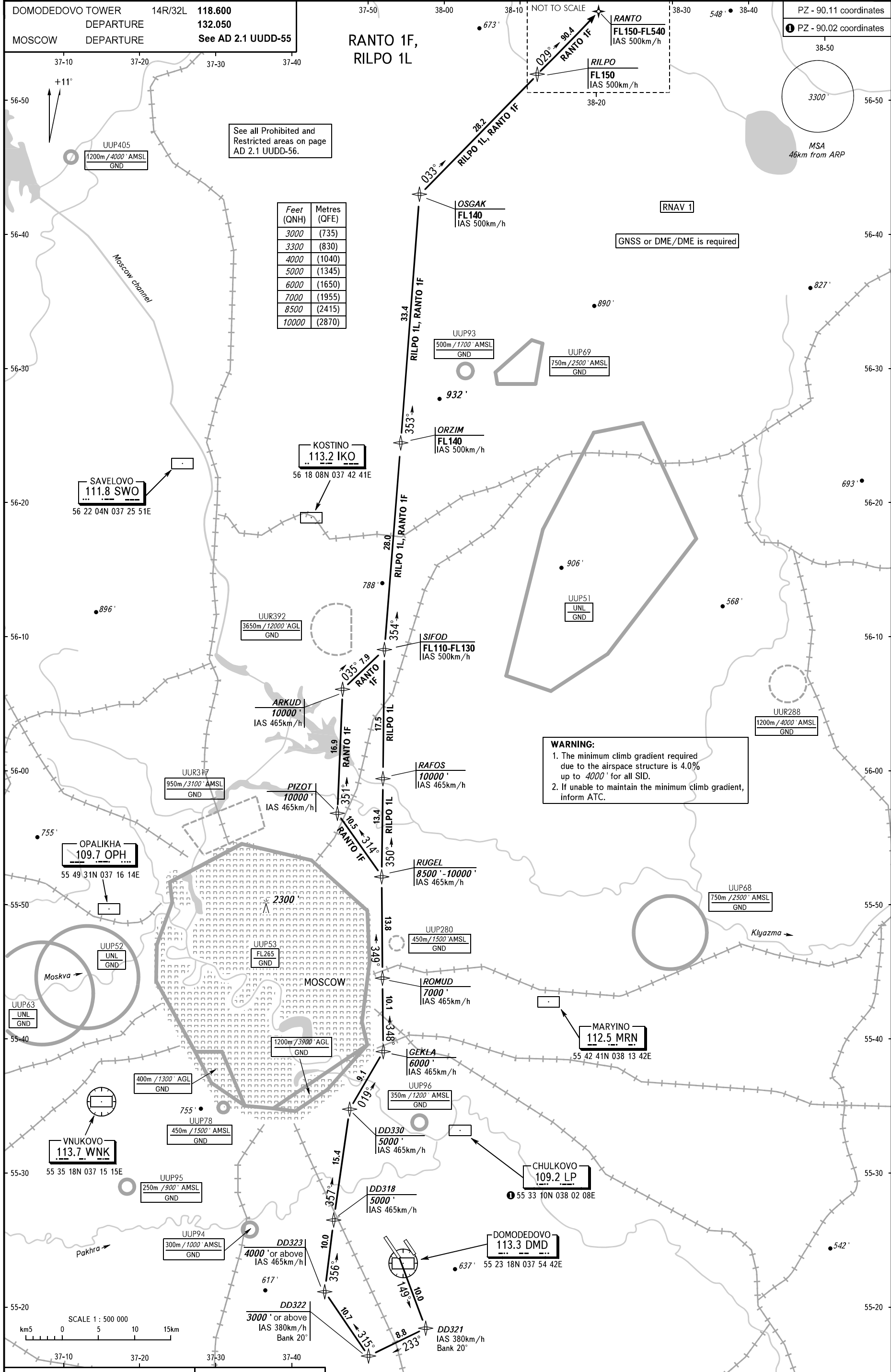


TRANSITION  
ALTITUDE: 10000'



Feet (QNH)	Metres (QFE)
3000	(735)
3300	(830)
4000	(1040)
5000	(1345)
6000	(1650)
7000	(1955)
8500	(2415)
10000	(2870)

**WARNING:**

- The minimum climb gradient required due to the airspace structure is 4.0% up to 4000' for all SID.
- If unable to maintain the minimum climb gradient, inform ATC.

BEARINGS AND TRACKS ARE MAGNETIC  
ALTITUDES AND ELEVATIONS IN FEET  
DISTANCES IN KILOMETRES

Alt set: -QNH(QFE on req);  
-hPa(mm on req).