

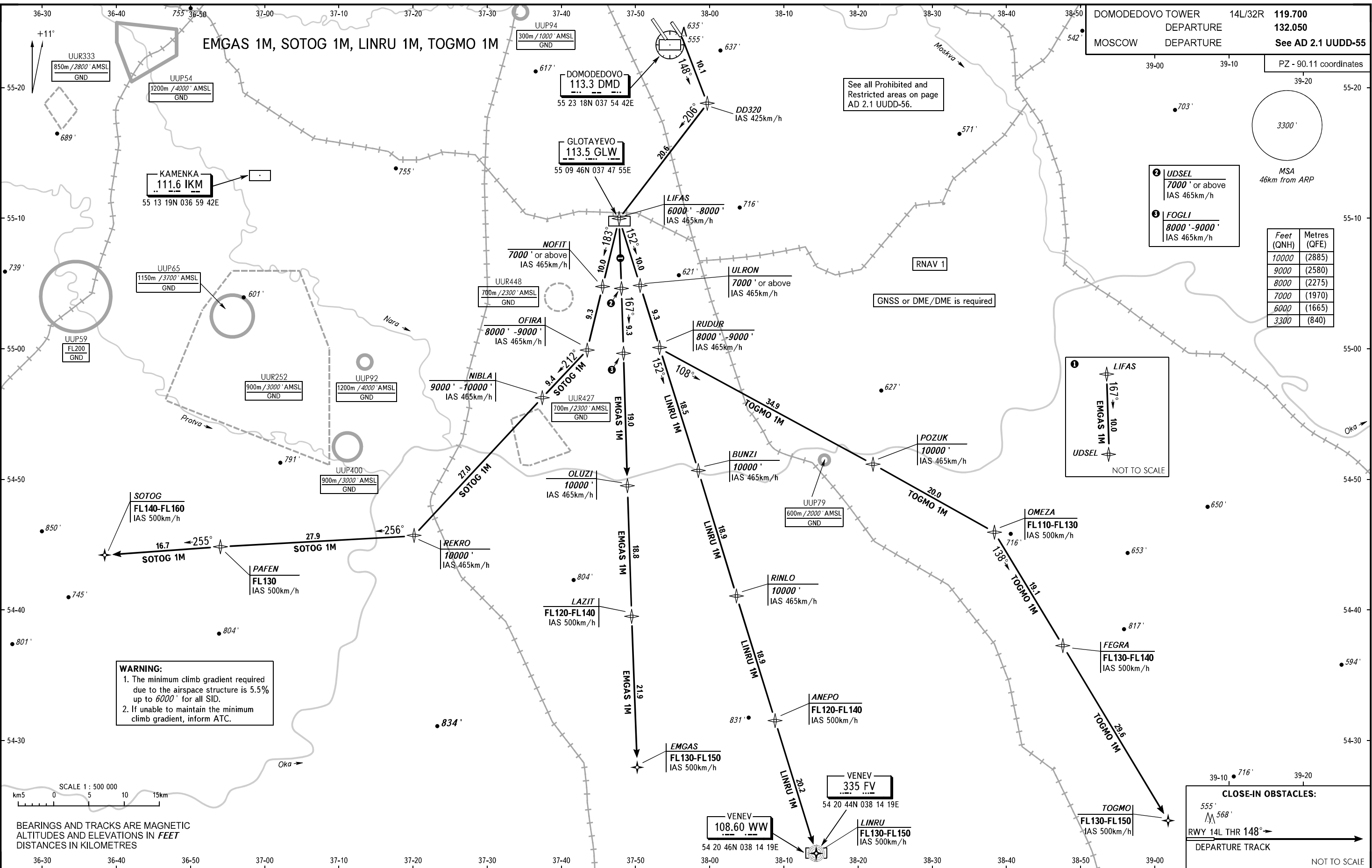
STANDARD DEPARTURE CHART
INSTRUMENT (SID) - ICAO

TRANSITION
ALTITUDE : 10000'

MOSCOW, RUSSIA
DOMODEDOVO
RNAV RWY 14L

DOMODEDOVO TOWER 14L/32R 119.700
DEPARTURE 132.050
MOSCOW DEPARTURE See AD 2.1 UDD-55

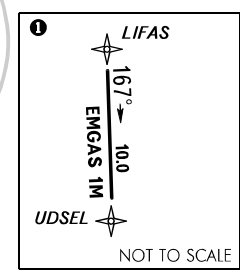
PZ - 90.11 coordinates



See all Prohibited and Restricted areas on page AD 2.1 UDD-56.

- ② UDSEL 7000' or above IAS 465km/h
- ③ FOGLI 8000' - 9000' IAS 465km/h

Feet (QNH)	Metres (QFE)
10000	(2885)
9000	(2580)
8000	(2275)
7000	(1970)
6000	(1665)
3300	(840)

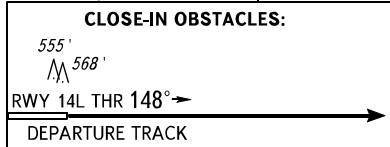


WARNING:

- The minimum climb gradient required due to the airspace structure is 5.5% up to 6000' for all SID.
- If unable to maintain the minimum climb gradient, inform ATC.

SCALE 1 : 500 000
km 5 0 5 10 15 km

BEARINGS AND TRACKS ARE MAGNETIC
ALTITUDES AND ELEVATIONS IN FEET
DISTANCES IN KILOMETRES



CHANGE: New chart