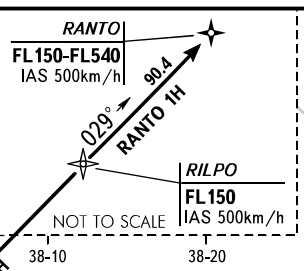


DOMODEDOVO TOWER 14L/32R 119.700
DEPARTURE 132.050
MOSCOW DEPARTURE See AD 2.1 UDD-55

PZ - 90.02 coordinates
PZ - 90.11 coordinates

RANTO 1H, RILPO 1N

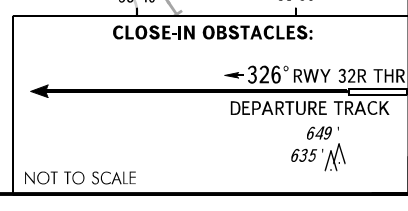
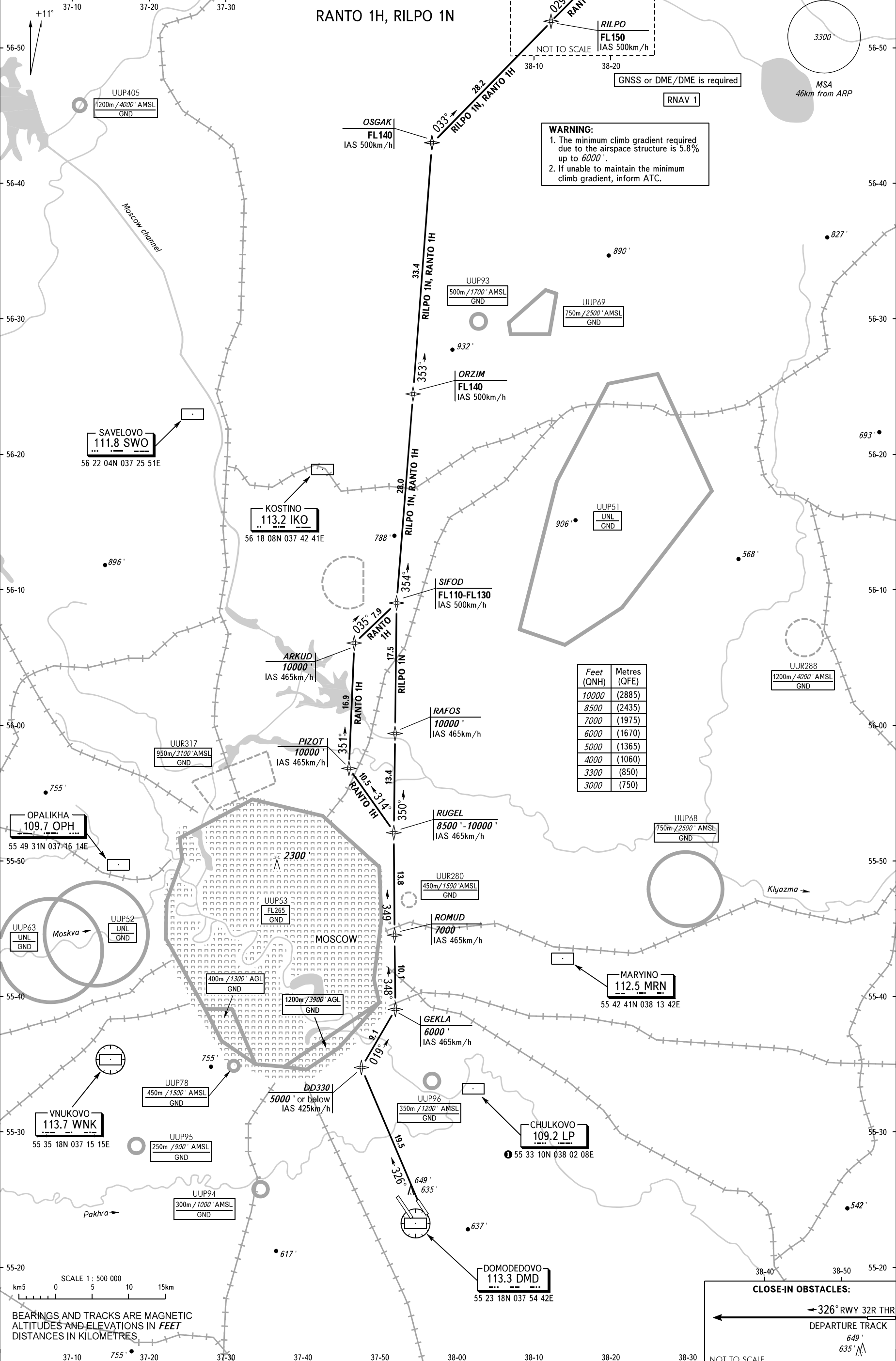


GNSS or DME/DME is required
RNAV 1

WARNING:

- The minimum climb gradient required due to the airspace structure is 5.8% up to 6000'.
- If unable to maintain the minimum climb gradient, inform ATC.

Feet (QNH)	Metres (QFE)
10000	(2885)
8500	(2435)
7000	(1975)
6000	(1670)
5000	(1365)
4000	(1060)
3300	(850)
3000	(750)



BEARINGS AND TRACKS ARE MAGNETIC
ALTITUDES AND ELEVATIONS IN FEET
DISTANCES IN KILOMETRES

CHANGE: New chart