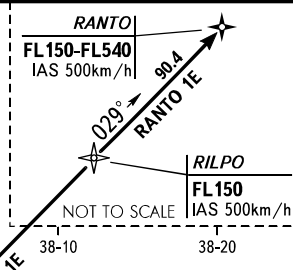


DOMODEDOVO TOWER 14L/32R 119.700
 DEPARTURE 132.050
 MOSCOW DEPARTURE See AD 2.1 UUDD-55

RANTO 1E, RILPO 1M

See all Prohibited and Restricted areas on page AD 2.1 UUDD-56.



PZ - 90.11 coordinates
 PZ - 90.02 coordinates

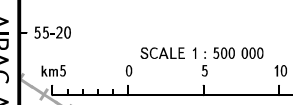
Feet (QNH)	Metres (QFE)
10000	(2885)
8500	(2425)
7000	(1970)
6000	(1665)
5000	(1360)
4000	(1055)
3300	(840)
3000	(750)

WARNING:
 1. The minimum climb gradient required due to obstacles is 3.8% or above up to 900' for all SID.
 2. The minimum climb gradient required due to the airspace structure is 4.0% or above up to 4000' for all SID.
 3. If unable to maintain the minimum climb gradient, inform ATC.

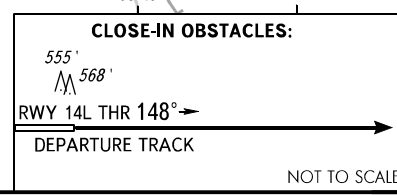
RNAV 1
 GNSS or DME/DME is required

AIP
 RUSSIA
 STANDARD DEPARTURE CHART
 INSTRUMENT (SID) - ICAO

TRANSITION
 ALTITUDE : 10000'



BEARINGS AND TRACKS ARE MAGNETIC
 ALTITUDES AND ELEVATIONS IN FEET
 DISTANCES IN KILOMETRES



MOSCOW, RUSSIA
 DOMODEDOVO
 RNAV RWY 14L
 AD 2.1 UUDD-143
 03 DEC 20