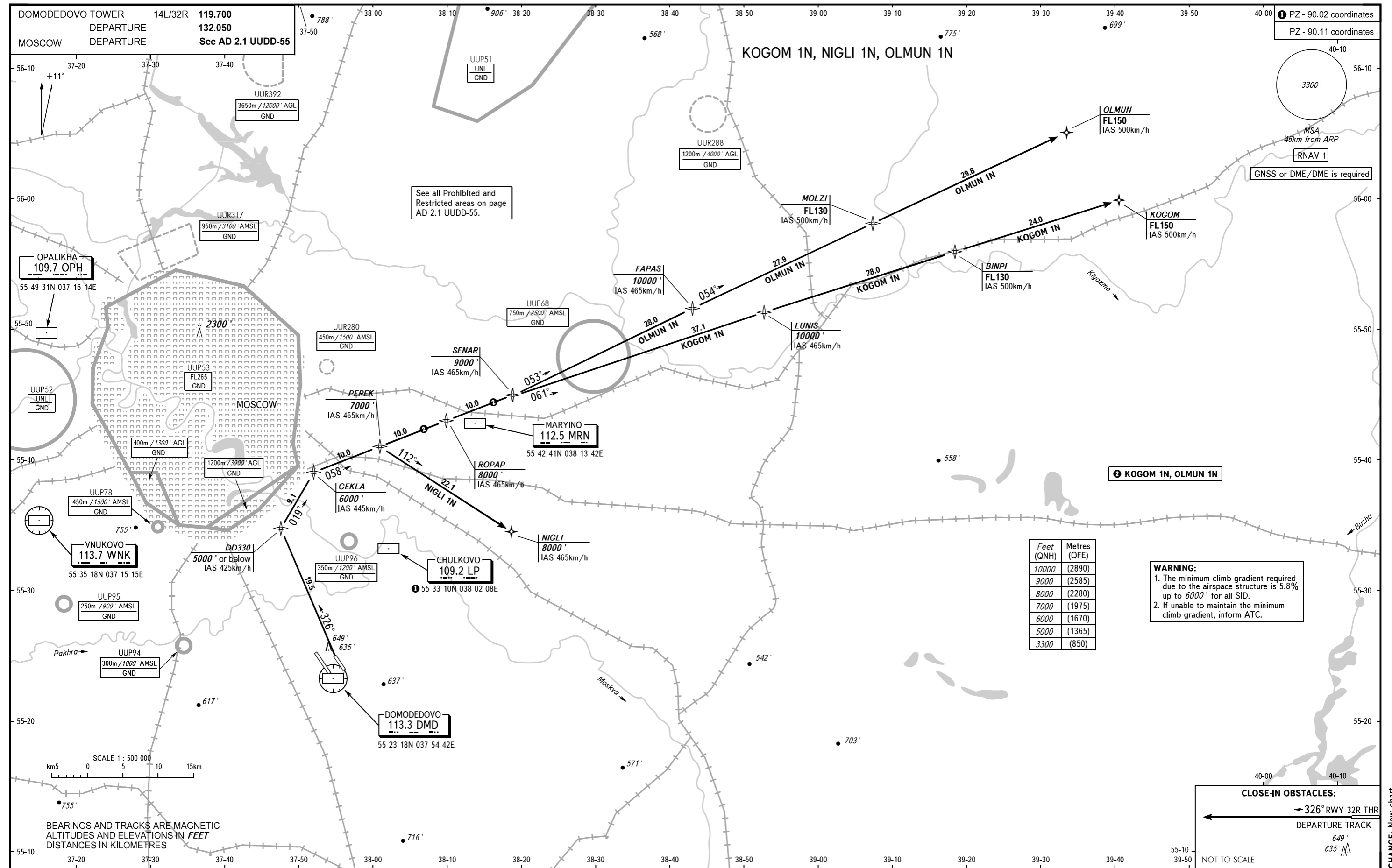


STANDARD DEPARTURE CHART  
INSTRUMENT (SID) - ICAO

MOSCOW, RUSSIA  
DOMODEDOVO  
RNAV RWY 32R

TRANSITION  
ALTITUDE : 10000'



DOMODEDOVO TOWER 14L/32R 119.700  
DEPARTURE 132.050  
MOSCOW DEPARTURE See AD 2.1 UDD-55

OPALIKHA 109.7 OPH  
55 49 31N 037 16 14E

VNUKOVO 113.7 WNK  
55 35 18N 037 15 15E

DOMODEDOVO 113.3 DMD  
55 23 18N 037 54 42E

MARYINO 112.5 MRN  
55 42 41N 038 13 42E

CHULKOVO 109.2 LP  
55 33 10N 038 02 08E

Feet (QNH)	Metres (QFE)
10000	(2890)
9000	(2585)
8000	(2280)
7000	(1975)
6000	(1670)
5000	(1365)
3300	(850)

**WARNING:**  
1. The minimum climb gradient required due to the airspace structure is 5.8% up to 6000' for all SID.  
2. If unable to maintain the minimum climb gradient, inform ATC.

**CLOSE-IN OBSTACLES:**  
← 326° RWY 32R THR  
DEPARTURE TRACK  
649'  
635'

NOT TO SCALE