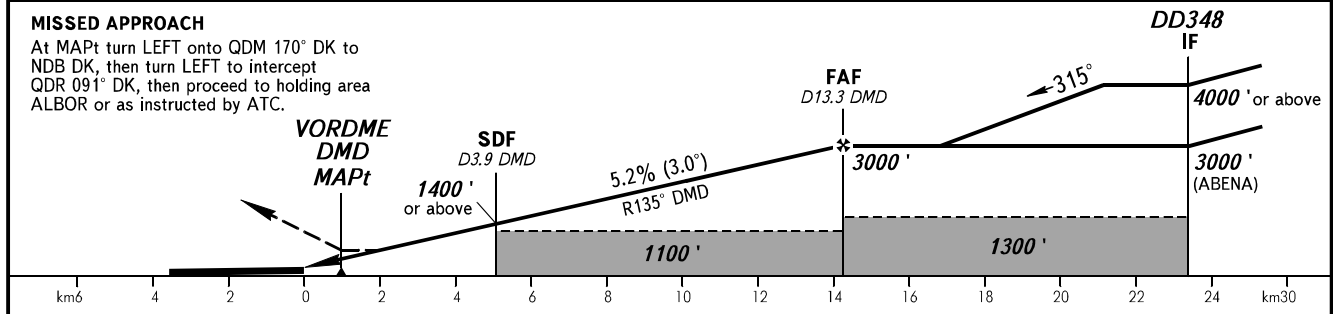
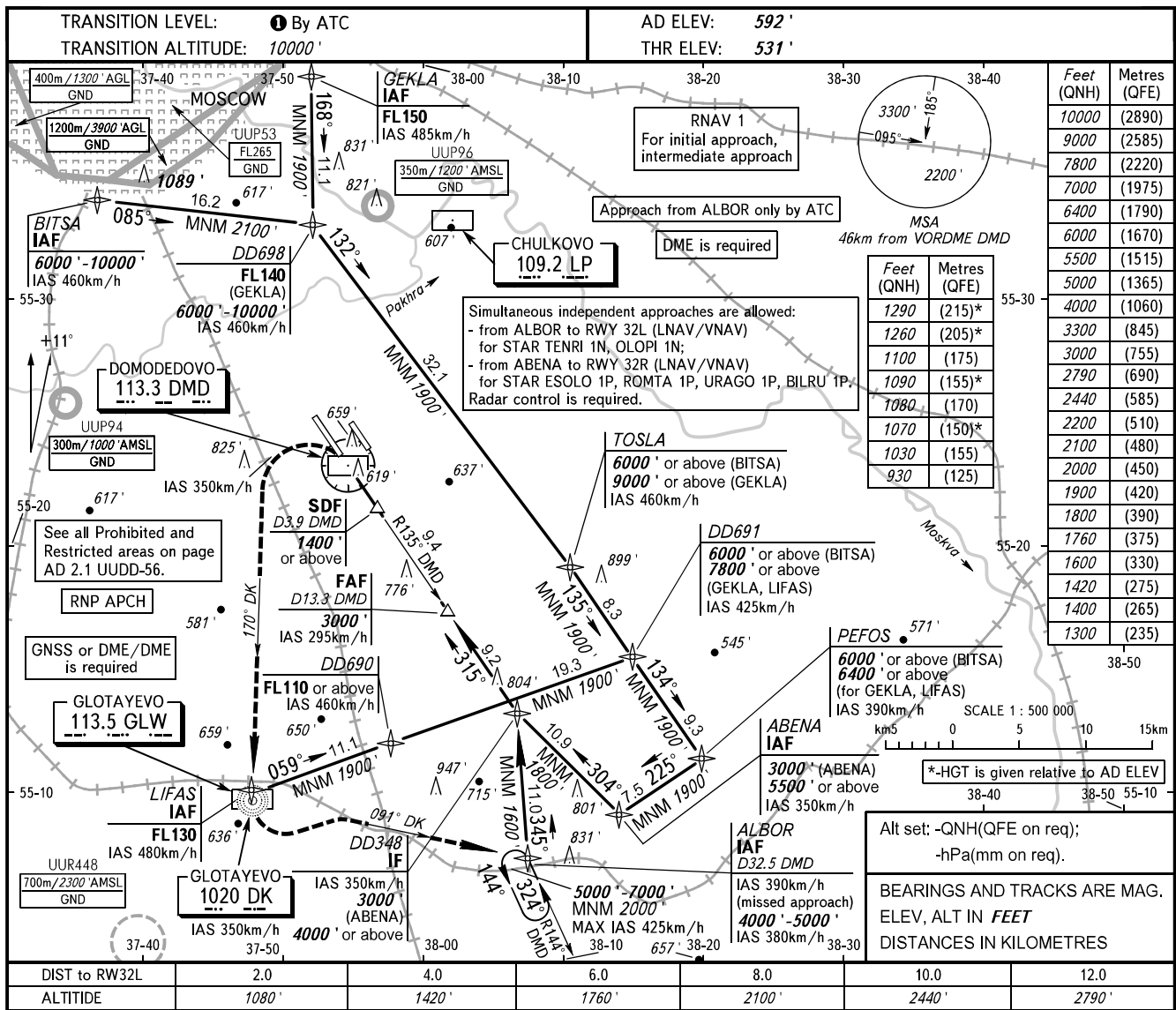


**INSTRUMENT  
APPROACH  
CHART - ICAO**

ARRIVAL	Sector A6	<b>125.300</b>
	Sector A8	<b>129.800</b>
	Sector DD1	<b>127.700</b>
	Sector DD2	<b>119.400</b>
TOWER	14R/32L	<b>118.600</b>

**MOSCOW, RUSSIA  
DOMODEDOVO  
VOR RWY 32L**



OCA(H)		A	B	C	D								
Straight-in	With SDF	930' (400')	930' (400')	930' (400')	930' (400')								
	WO SDF	1030' (500')	1030' (500')	1030' (500')	1030' (500')								
Approach													
Circling		1070' (480')	1090' (500')	1260' (670')	1290' (700')								
GROUND SPEED		km/h	150	180	210	240	270	300	330	360	390	420	450
RATE OF DESCENT		m/s	2.2	2.6	3.1	3.5	3.9	4.3	4.8	5.2	5.6	6.0	6.5
		ft/min	427	512	597	683	768	853	939	1024	1109	1195	1280

**TRANSITION LEVEL:**  
 - FL 110 when QNH is 1013 hPa (760mm mercury column) or above;  
 - FL 120 when QNH is 977 hPa (733mm mercury column) or above, but less than 1013 hPa (760mm mercury column);  
 - FL 130 when QNH is less than 977 hPa (733mm mercury column).