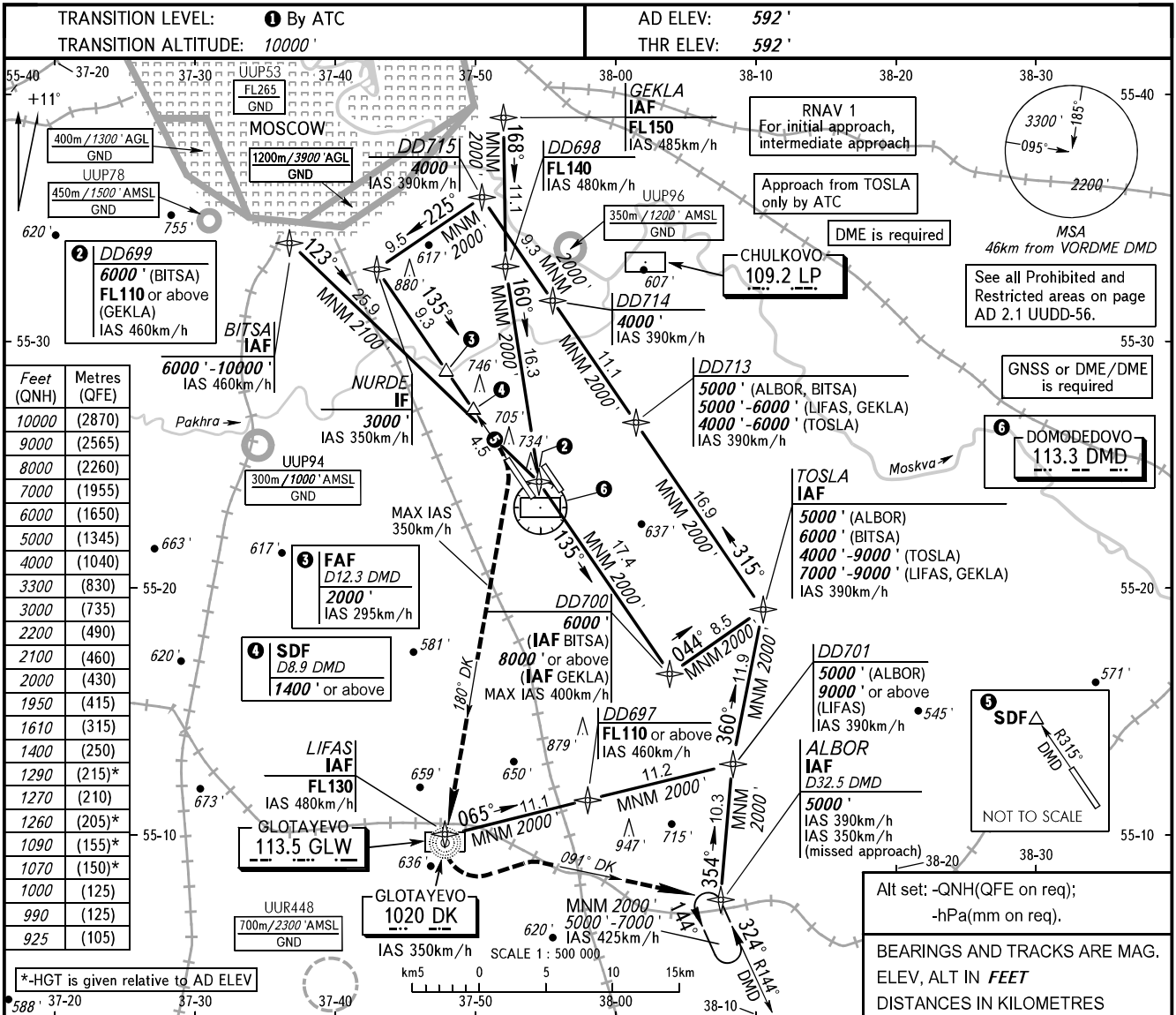


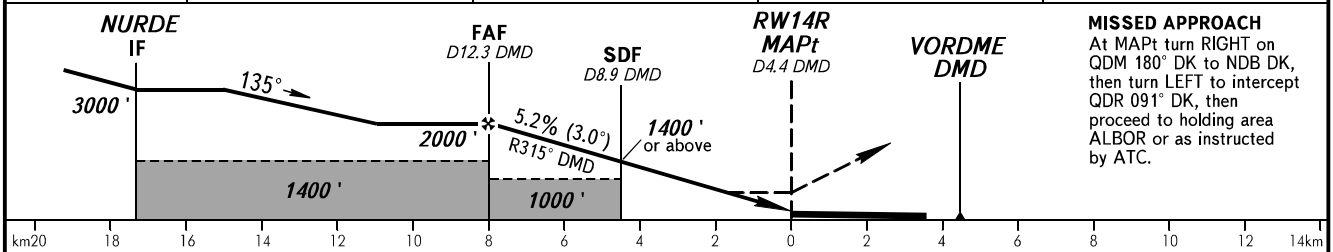
**INSTRUMENT
APPROACH
CHART - ICAO**

**MOSCOW, RUSSIA
DOMODEDOVO
VOR RWY 14R**

ARRIVAL	Sector A6	125.300
	Sector A8	129.800
	Sector DD1	127.700
	Sector DD2	119.400
TOWER	14R/32L	118.600



DIST to RW14R	12.0	10.0	8.0	6.0
ALTITUDE	1950'	1610'	1270'	925'



OCA(H)	A	B	C	D								
Straight-in Approach	990' (400')	990' (400')	990' (400')	990' (400')								
Circling	1070' (480')	1090' (500')	1260' (670')	1290' (700')								
GROUND SPEED	km/h	150	180	210	240	270	300	330	360	390	420	450
RATE OF DESCENT	m/s	2.2	2.6	3.0	3.5	3.9	4.3	4.8	5.2	5.6	6.1	6.5
RATE OF DESCENT	ft/min	427'	512'	597'	683'	768'	853'	939'	1024'	1109'	1195'	1280'

1 TRANSITION LEVEL:
 - FL110 when QNH is 1013 hPa (760mm mercury column) or above;
 - FL120 when QNH is 977 hPa (733mm mercury column) or above, but less than 1013 hPa (760mm mercury column);
 - FL130 when QNH is less than 977 hPa (733mm mercury column).

CHANGE: New chart