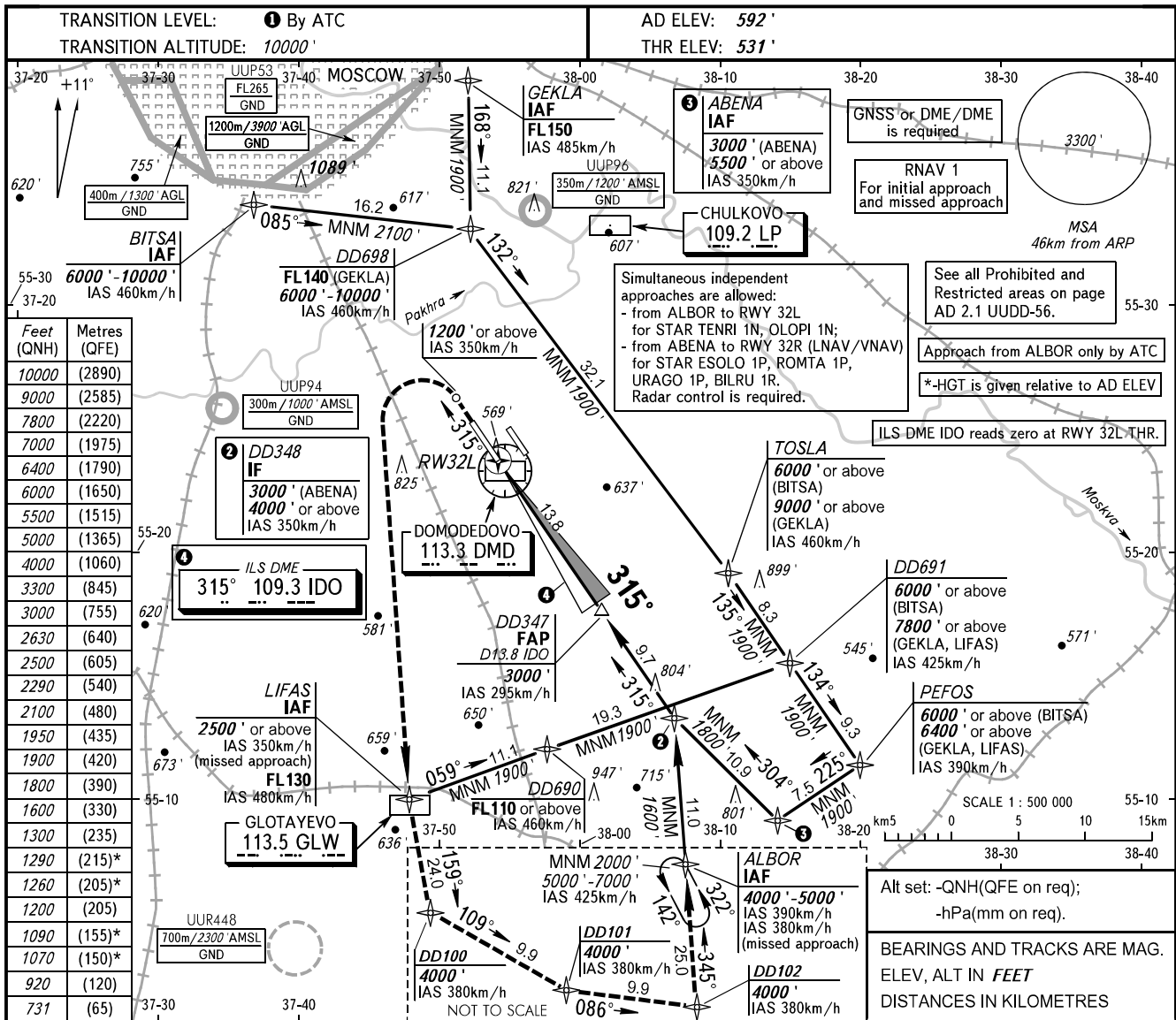


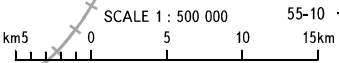
**INSTRUMENT
APPROACH
CHART - ICAO**

ARRIVAL	Sector A6	125.300
	Sector A8	129.800
	Sector DD1	127.700
	Sector DD2	119.400
TOWER	14R/32L	118.600

MOSCOW, RUSSIA
DOMODEDOVO
ILS CAT I RWY 32L



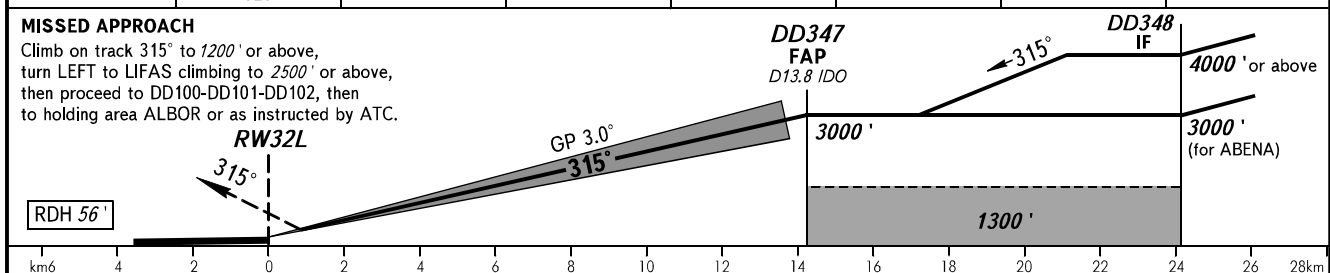
Feet (QNH)	Metres (QFE)
10000	(2890)
9000	(2585)
8000	(2220)
7000	(1975)
6400	(1790)
6000	(1650)
5500	(1515)
5000	(1365)
4000	(1060)
3300	(845)
3000	(755)
2630	(640)
2500	(605)
2290	(540)
2100	(480)
1950	(435)
1900	(420)
1800	(390)
1600	(330)
1300	(235)
1290	(215)*
1260	(205)*
1200	(205)
1090	(155)*
1070	(150)*
920	(120)
731	(65)



Alt set: -QNH(QFE on req);
-hPa(mm on req).

BEARINGS AND TRACKS ARE MAG.
ELEV, ALT IN FEET
DISTANCES IN KILOMETRES

DIST to RW32L	2.0	4.0	6.0	8.0	10.0	12.0	14.2
ALTITUDE	920'	1260'	1600'	1950'	2290'	2630'	3000'



OCA(H)		A	B	C	D	1 TRANSITION LEVEL: - FL110 when QNH is 1013 hPa (760mm mercury column) or above; - FL120 when QNH is 977 hPa (733mm mercury column) or above, but less than 1013 hPa (760mm mercury column); - FL130 when QNH is less than 977 hPa (733mm mercury column).							
Straight-in Approach	CAT I	731' (200')	731' (200')	731' (200')	731' (200')								
Circling		1070' (480')	1090' (500')	1260' (670')	1290' (700')								
GROUND SPEED	km/h		150	180	210	240	270	300	330	360	390	420	450
RATE OF DESCENT	m/s		2.2	2.6	3.0	3.5	3.9	4.3	4.8	5.2	5.6	6.1	6.5
RATE OF DESCENT	ft/min		427	512	597	683	768	853	939	1024	1109	1195	1280