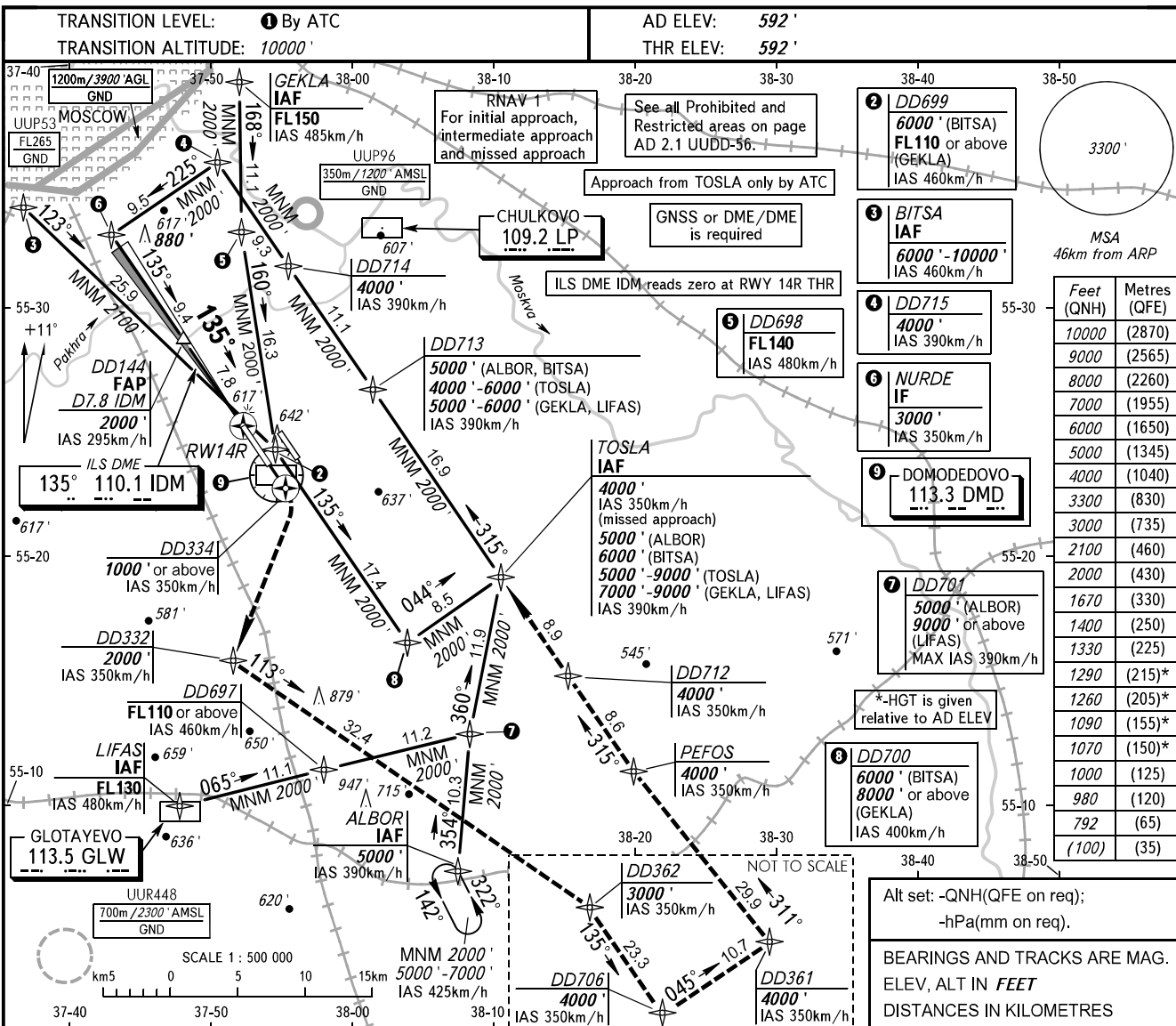


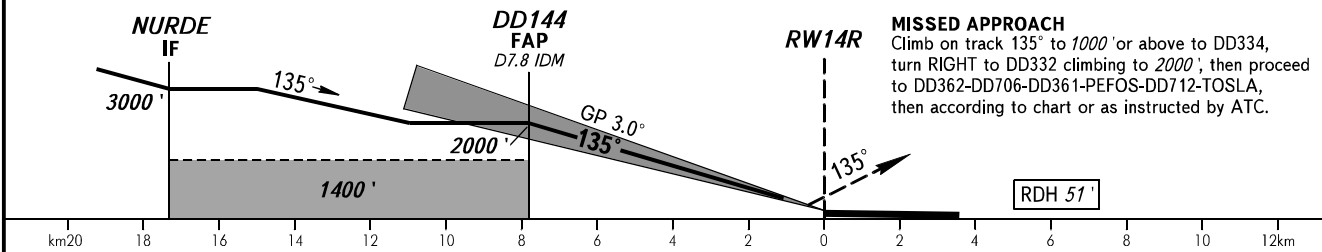
**INSTRUMENT  
APPROACH  
CHART - ICAO**

ARRIVAL	Sector A6	<b>125.300</b>
	Sector A8	<b>129.800</b>
	Sector DD1	<b>127.700</b>
	Sector DD2	<b>119.400</b>
TOWER	14R/32L	<b>118.600</b>

**MOSCOW, RUSSIA  
DOMODEDOVO  
ILS CAT I/II/IIIA RWY 14R**



DIST to RW14R	7.8	6.0	4.0	2.0
ALTITUDE	2000'	1670'	1330'	980'



OCA(H)		A	B	C	D							
Straight-in Approach	CAT I	792' (200')	792' (200')	792' (200')	792' (200')							
	CAT II	(100')	(100')	(100')	(100')							
	CAT IIIA	APPROVED										
Circling		1070' (480')	1090' (500')	1260' (670')	1290' (700')							
GROUND SPEED	km/h	150	180	210	240	270	300	330	360	390	420	450
RATE OF DESCENT	m/s	2.2	2.6	3.0	3.5	3.9	4.3	4.8	5.2	5.6	6.1	6.5
RATE OF DESCENT	ft/min	427	512	597	683	768	853	939	1024	1109	1195	1280

**1** TRANSITION LEVEL:  
 - FL110 when QNH is 1013 hPa (760mm mercury column) or above;  
 - FL120 when QNH is 977 hPa (733mm mercury column) or above, but less than 1013 hPa (760mm mercury column);  
 - FL130 when QNH is less than 977 hPa (733mm mercury column).