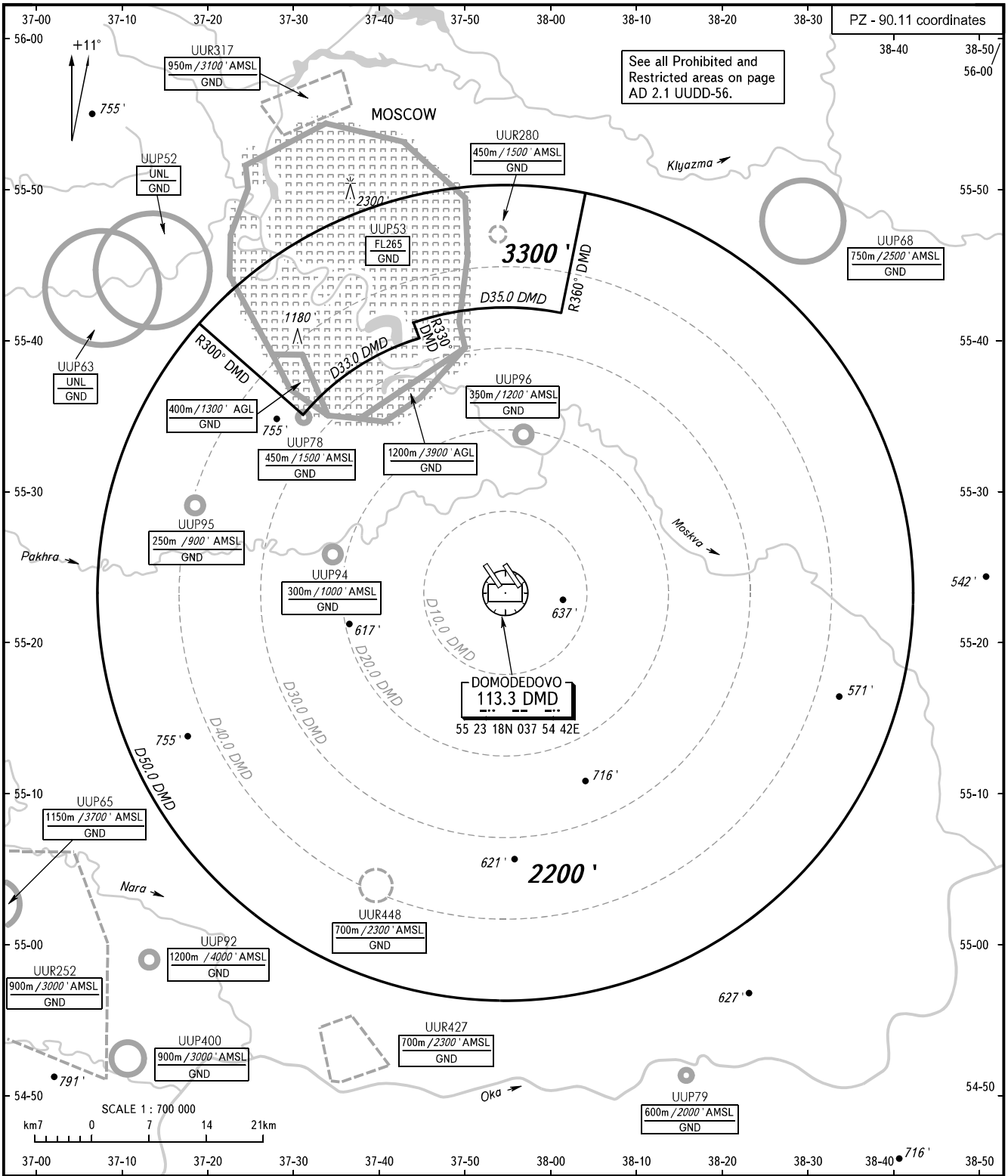


ATC SURVEILLANCE MINIMUM
ALTITUDE CHART

MOSCOW, RUSSIA

DOMODEDOVO

ELEV
592' TRANSITION ALTITUDE: **10000'**



MOSCOW	APPROACH	See AD 2.1 UDD-55
MOSCOW	DEPARTURE	See AD 2.1 UDD-55
DOMODEDOVO	ARRIVAL	Sector A6 125.300
		Sector A8 129.800
		Sector DD1 127.700
		Sector DD2 119.400
	DEPARTURE	132.050

WARNING:
1. The chart may only be used for cross-checking of altitudes assigned while the aircraft is under radar control.
2. When vectoring is carried out in low temperature conditions, minimum vectoring altitudes for IFR flights must be corrected by altimeter temperature correction.

BEARINGS AND TRACKS ARE MAGNETIC
ALTITUDES AND ELEVATIONS IN FEET
DISTANCES IN KILOMETRES

CHANGE: New chart