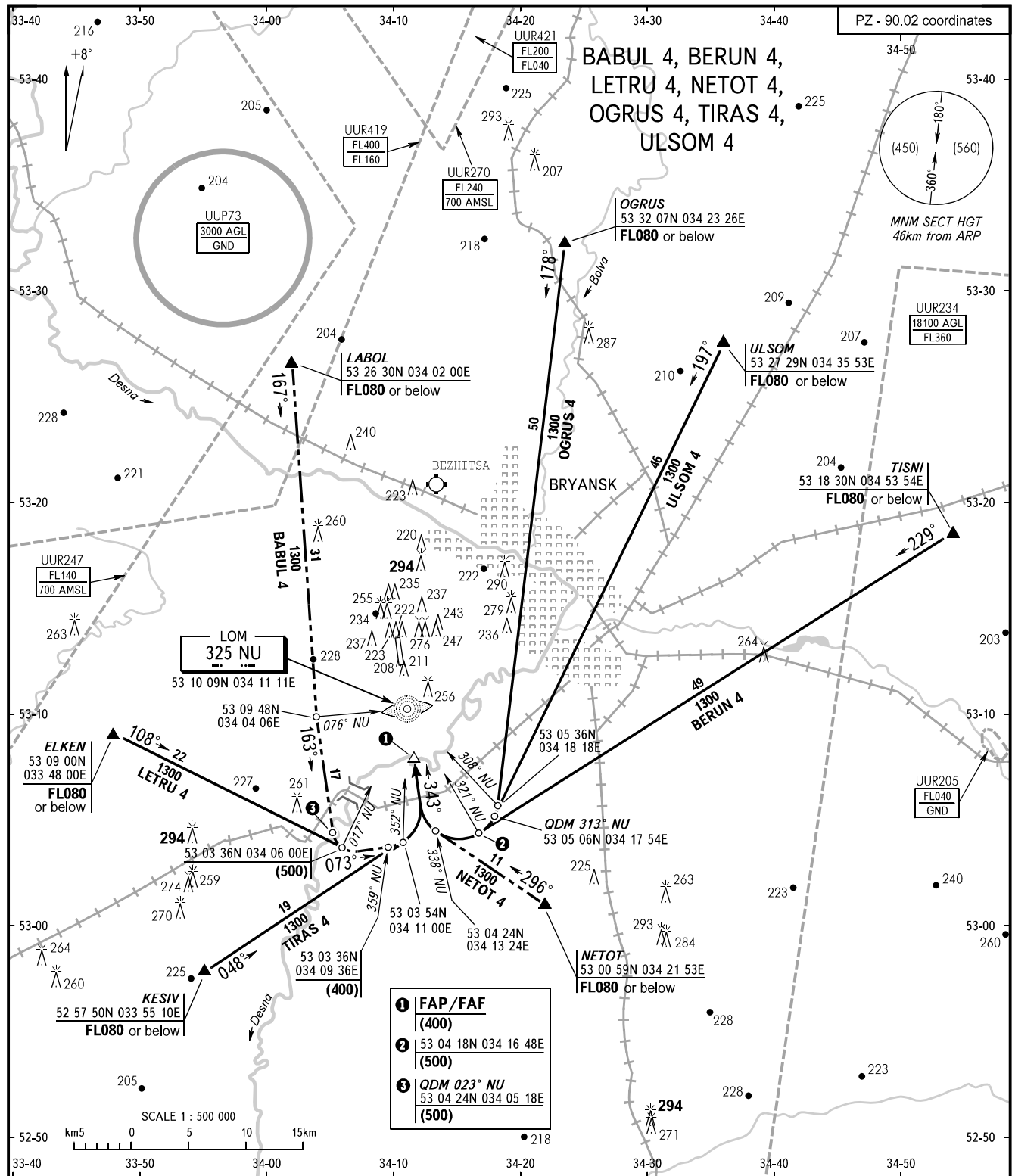


STANDARD ARRIVAL CHART
INSTRUMENT (STAR) - ICAO

TRANSITION
LEVEL : **FL040**

BRYANSK, RUSSIA
BRYANSK
RWY 34



① **FAP/FAF**
(400)
② 53 04 18N 034 16 48E
(500)
③ **QDM 023° NU**
53 04 24N 034 05 18E
(500)

TOWER **118.500**

WARNING:
1. ACFT shall reach transition level FL040 at 10km before base turn and at 20km before FAP/FAF during straight-in approach.
2. Proceed to LOM NU as directed by ATS unit, turn on track 163°, then according to the rectangular approach pattern.

BEARINGS AND TRACKS ARE MAGNETIC
ALTITUDES, HEIGHTS AND ELEVATIONS ARE IN METRES
DISTANCES ARE IN KILOMETRES

CHANGE: QDM