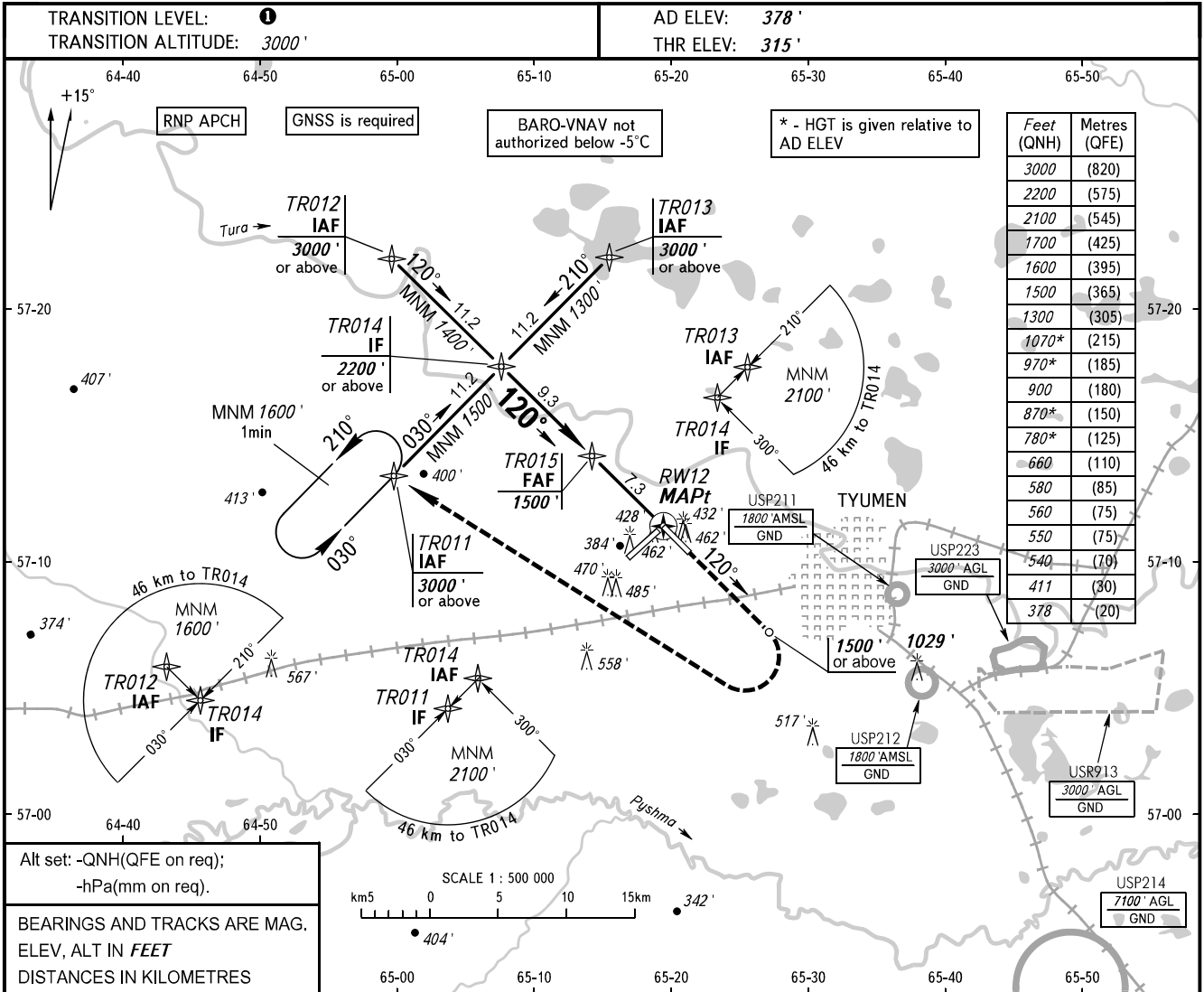


**INSTRUMENT  
APPROACH  
CHART - ICAO**

**TYUMEN, RUSSIA  
ROSHCHINO  
RNP RWY 12**

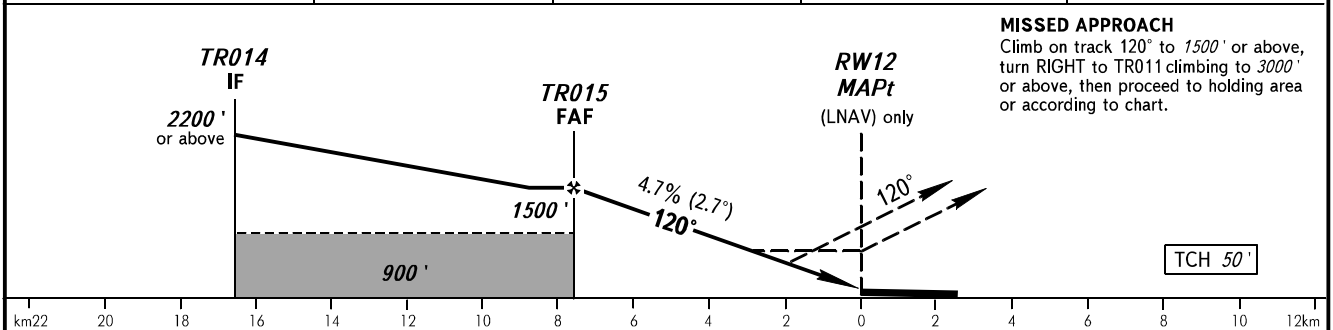
START	118.200
RADAR	126.100



Alt set: -QNH(QFE on req);  
-hPa(mm on req).

BEARINGS AND TRACKS ARE MAG.  
ELEV, ALT IN FEET  
DISTANCES IN KILOMETRES

DIST to RW12	7.0	6.0	4.0	2.0
ALTITUDE	1450'	1230'	990'	680'



OCA(H)		A	B	C	D	① TRANSITION LEVEL:							
Straight-in Approach	LNAV	660' (350')	660' (350')	660' (350')	660' (350')	- FL040 when QNH is 1013 hPa (760mm mercury column) or above;							
	LNAV/VNAV	540' (220')	550' (240')	560' (240')	580' (260')	- FL050 when QNH is 977 hPa (733mm mercury column) or above, but less than 1013 hPa (760mm mercury column);							
Circling		780' (410')	870' (500')	970' (600')	1070' (690')	- FL060 when QNH is less than 977 hPa (733mm mercury column).							
GROUND SPEED		km/h	150	180	210	240	270	300	330	360	390	420	450
RATE OF DESCENT		m/s	2.0	2.4	2.7	3.1	3.5	3.9	4.3	4.7	5.1	5.5	5.9
		ft/min		385	463	540	617	694	771	848	925	1002	1079

**WARNING**  
Turn before MAPt is PROHIBITED.

CHANGE: New chart