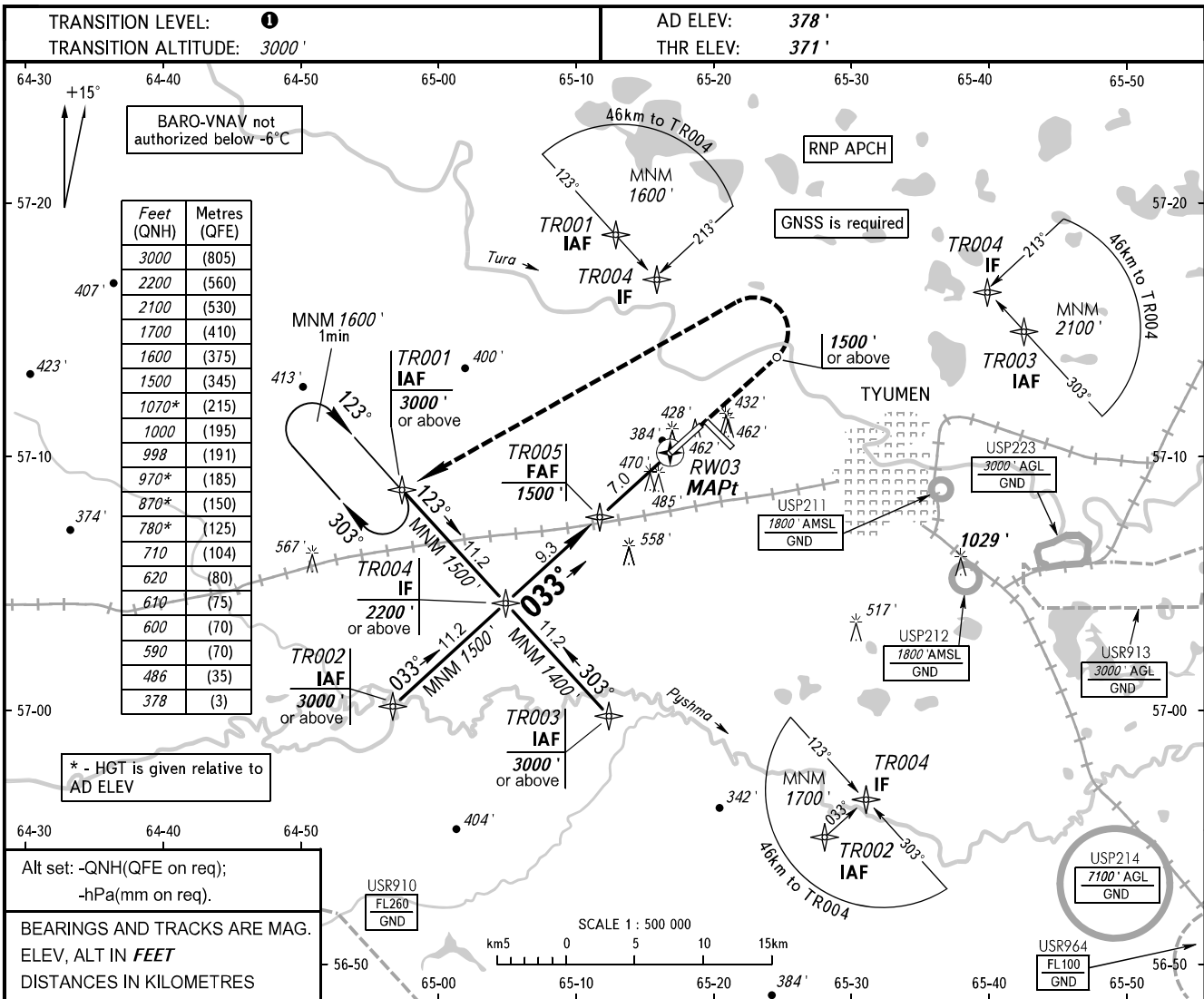


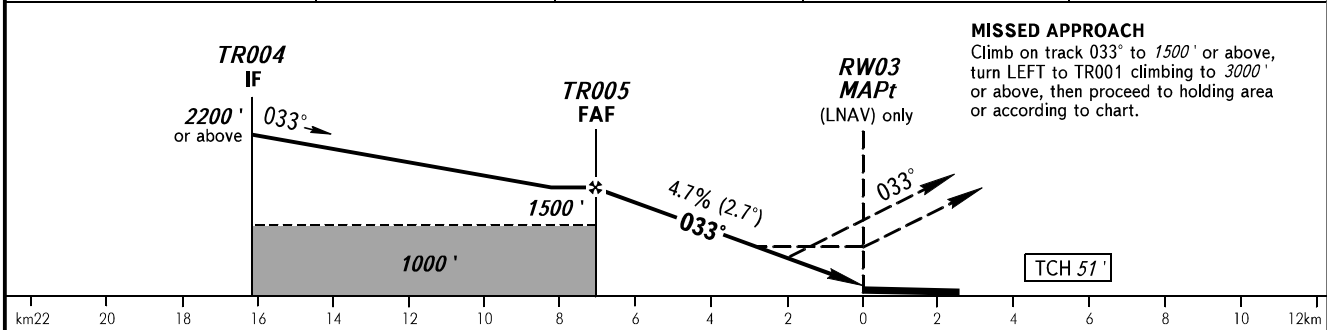
**INSTRUMENT
APPROACH
CHART - ICAO**

**TYUMEN, RUSSIA
ROSHCHINO
RNP RWY 03**

START **118.200**
RADAR **126.100**



| | | | | |
|--------------|-------|-------|-------|------|
| DIST to RW03 | 7.0 | 6.0 | 4.0 | 2.0 |
| ALTITUDE | 1500' | 1350' | 1040' | 730' |



| OCA(H) | | A | B | C | D | | | | | | | | |
|----------------------|-----------|-------------|-------------|-------------|--------------|-----|-----|-----|-----|-----|------|------|------|
| Straight-in Approach | LNAV | 710' (330') | 710' (330') | 710' (330') | 710' (330') | | | | | | | | |
| | LNAV/VNAV | 590' (220') | 600' (230') | 610' (240') | 620' (250') | | | | | | | | |
| Circling | | 780' (410') | 870' (500') | 970' (600') | 1070' (690') | | | | | | | | |
| GROUND SPEED | | km/h | 150 | 180 | 210 | 240 | 270 | 300 | 330 | 360 | 390 | 420 | 450 |
| RATE OF DESCENT | | m/s | 2.0 | 2.4 | 2.7 | 3.1 | 3.5 | 3.9 | 4.3 | 4.7 | 5.1 | 5.5 | 5.9 |
| | | ft/min | 385 | 463 | 540 | 617 | 694 | 771 | 848 | 925 | 1002 | 1079 | 1156 |

TRANSITION LEVEL:
- FL040 when QNH is 1013 hPa (760mm mercury column) or above;
- FL050 when QNH is 977 hPa (733mm mercury column) or above, but less than 1013 hPa (760mm mercury column);
- FL060 when QNH is less than 977 hPa (733mm mercury column).

WARNING
Turn before MAPt is PROHIBITED.

CHANGE: New chart