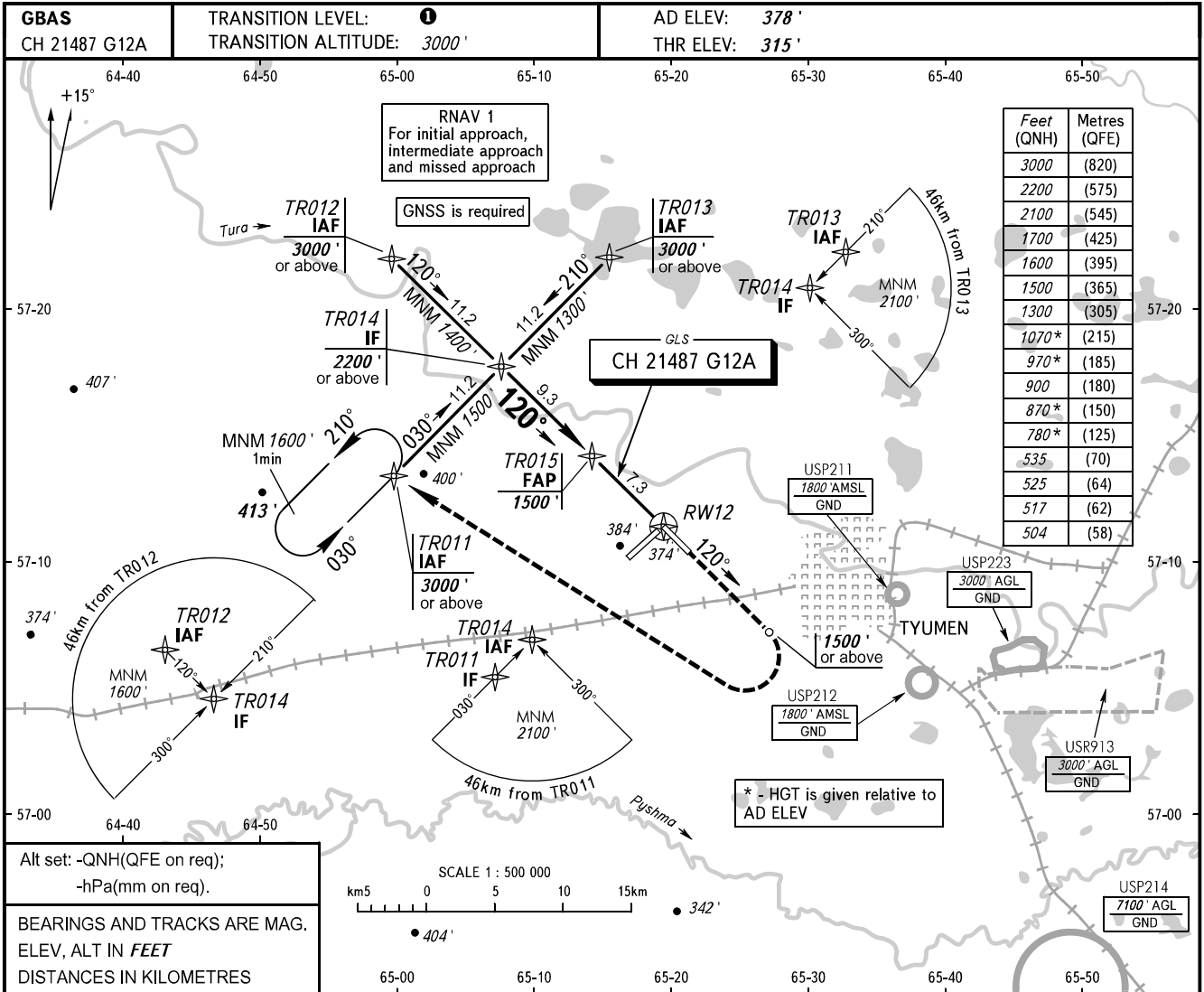


**INSTRUMENT  
APPROACH  
CHART - ICAO**

START **118.200**  
RADAR **126.100**

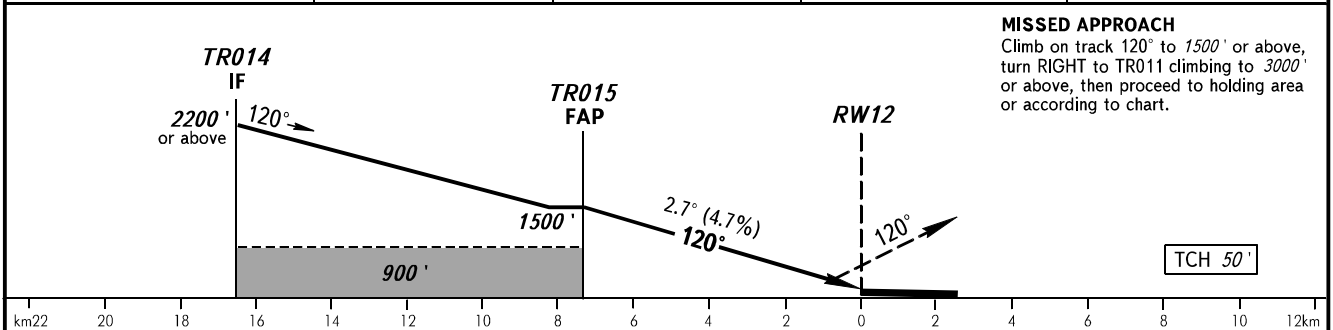
**TYUMEN, RUSSIA  
ROSHCHINO  
GLS RWY 12**



Alt set: -QNH(QFE on req);  
-hPa(mm on req).

BEARINGS AND TRACKS ARE MAG.  
ELEV, ALT IN FEET  
DISTANCES IN KILOMETRES

|              |       |       |      |      |
|--------------|-------|-------|------|------|
| DIST to RW12 | 7.0   | 6.0   | 4.0  | 2.0  |
| ALTITUDE     | 1445' | 1291' | 982' | 674' |



**MISSED APPROACH**  
Climb on track 120° to 1500' or above, turn RIGHT to TR011 climbing to 3000' or above, then proceed to holding area or according to chart.

**TRANSITION LEVEL:**  
- FL040 when QNH is 1013 hPa (760mm mercury column) or above;  
- FL050 when QNH is 977 hPa (733mm mercury column) or above, but less than 1013 hPa (760mm mercury column);  
- FL060 when QNH is less than 977 hPa (733mm mercury column).

|                 |        |     |     |     |     |     |     |     |     |      |      |      |
|-----------------|--------|-----|-----|-----|-----|-----|-----|-----|-----|------|------|------|
| GROUND SPEED    | km/h   | 150 | 180 | 210 | 240 | 270 | 300 | 330 | 360 | 390  | 420  | 450  |
|                 | m/s    | 2.0 | 2.4 | 2.7 | 3.1 | 3.5 | 3.9 | 4.3 | 4.7 | 5.1  | 5.5  | 5.9  |
| RATE OF DESCENT | ft/min | 385 | 463 | 540 | 617 | 694 | 771 | 848 | 925 | 1002 | 1079 | 1156 |

CHANGE: New chart