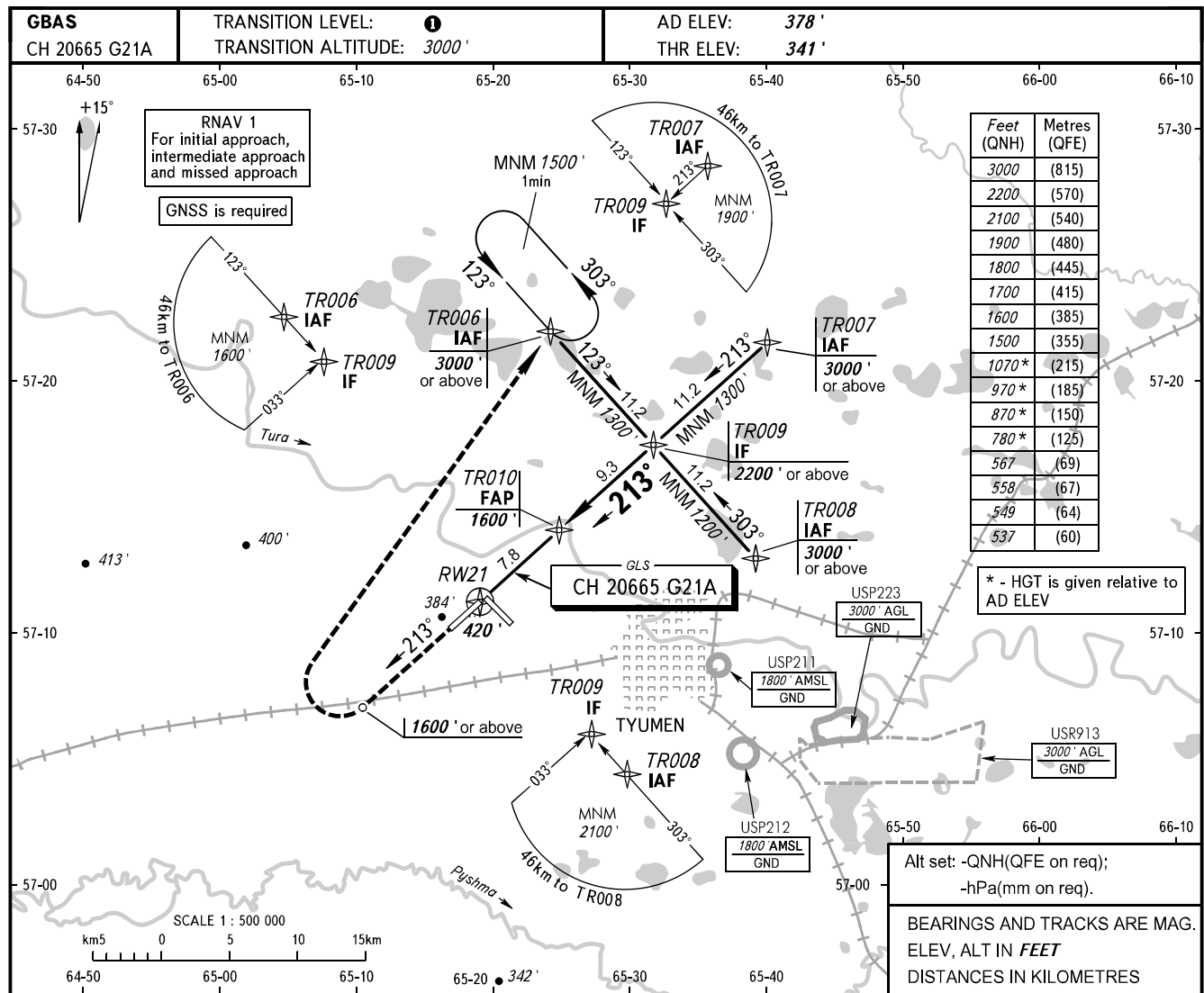


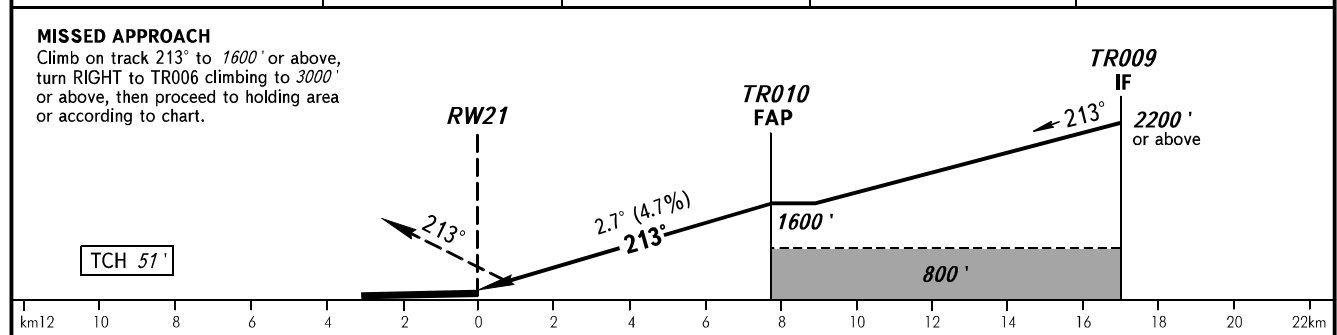
**INSTRUMENT
APPROACH
CHART - ICAO**

**TYUMEN, RUSSIA
ROSHCHINO
GLS RWY 21**

START	118.200
RADAR	126.100



DIST to RW21	2.0	4.0	6.0	7.86
ALTITUDE	701'	1009'	1317'	1600'



OCA(H)		A	B	C	D								
Straight-in Approach	CAT I	537' (196')	549' (208')	558' (217')	567' (226')								
Circling		780' (410')	870' (500')	970' (600')	1070' (690')								
GROUND SPEED		km/h	150	180	210	240	270	300	330	360	390	420	450
RATE OF DESCENT		m/s	2.0	2.4	2.7	3.1	3.5	3.9	4.3	4.7	5.1	5.5	5.9
		ft/min	385	463	540	617	694	771	848	925	1002	1079	1156

TRANSITION LEVEL:
 - FLO40 when QNH is 1013 hPa (760mm mercury column) or above;
 - FLO50 when QNH is 977 hPa (733mm mercury column) or above, but less than 1013 hPa (760mm mercury column);
 - FLO60 when QNH is less than 977 hPa (733mm mercury column).