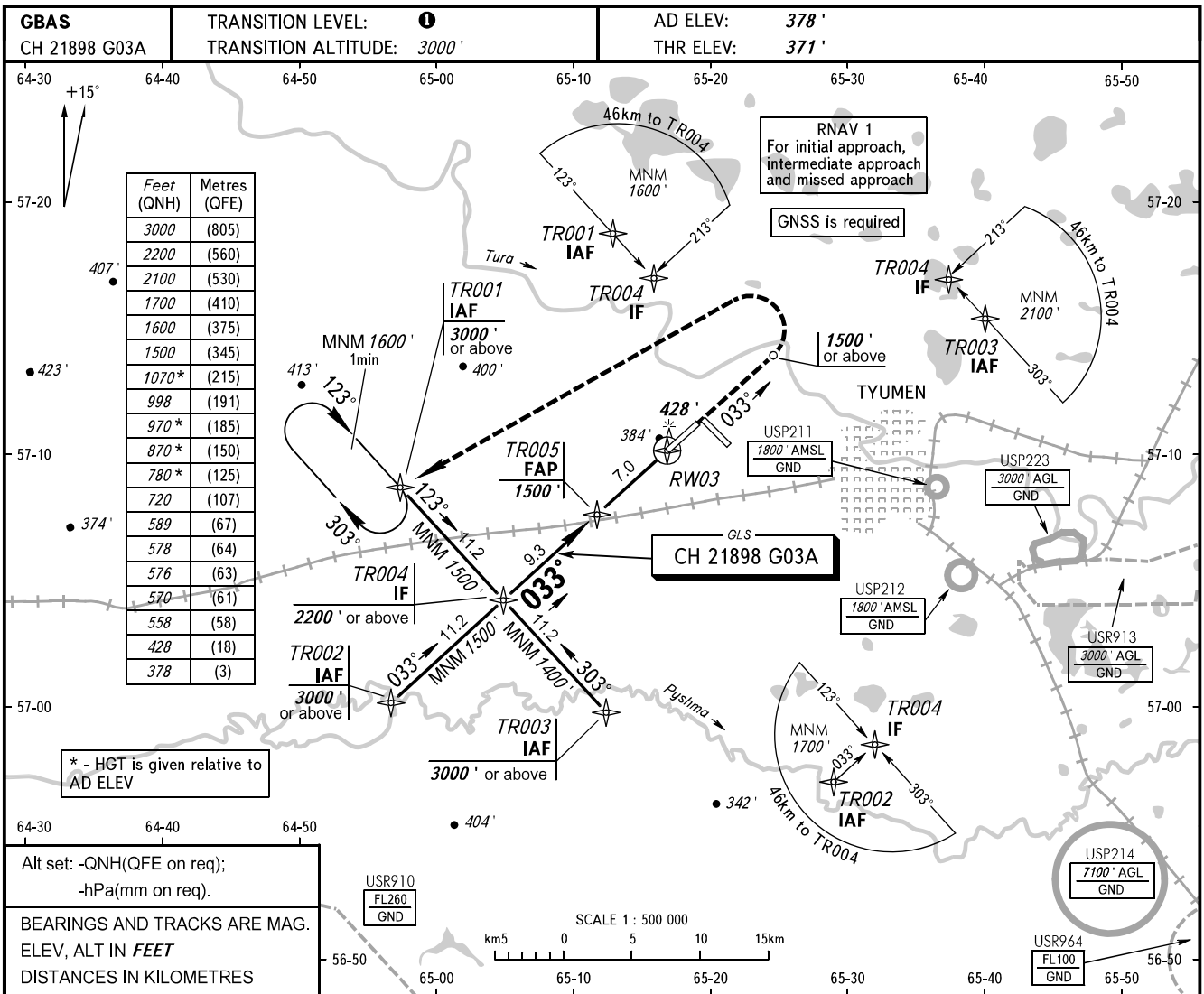


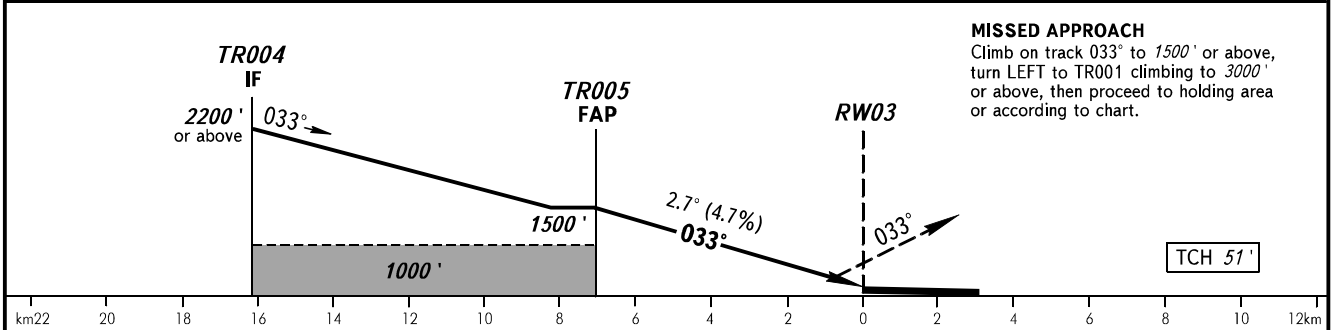
**INSTRUMENT
APPROACH
CHART - ICAO**

**TYUMEN, RUSSIA
ROSHCHINO
GLS RWY 03**

START **118.200**
RADAR **126.100**



DIST to RW03	7.0	6.0	4.0	2.0
ALTITUDE	1500'	1346'	1038'	730'



OCA(H)	A	B	C	D	TRANSITION LEVEL:							
					FL040	FL050	FL060	FL100	FL110	FL120		
Straight-in Approach	CAT I	558' (188')	570' (200')	578' (208')	589' (219')							
Circling		780' (410')	870' (500')	970' (600')	1070' (690')							
GROUND SPEED	km/h	150	180	210	240	270	300	330	360	390	420	450
RATE OF DESCENT	m/s	2.0	2.4	2.7	3.1	3.5	3.9	4.3	4.7	5.1	5.5	5.9
	ft/min	385	463	540	617	694	771	848	925	1002	1079	1156

CHANGE: New chart