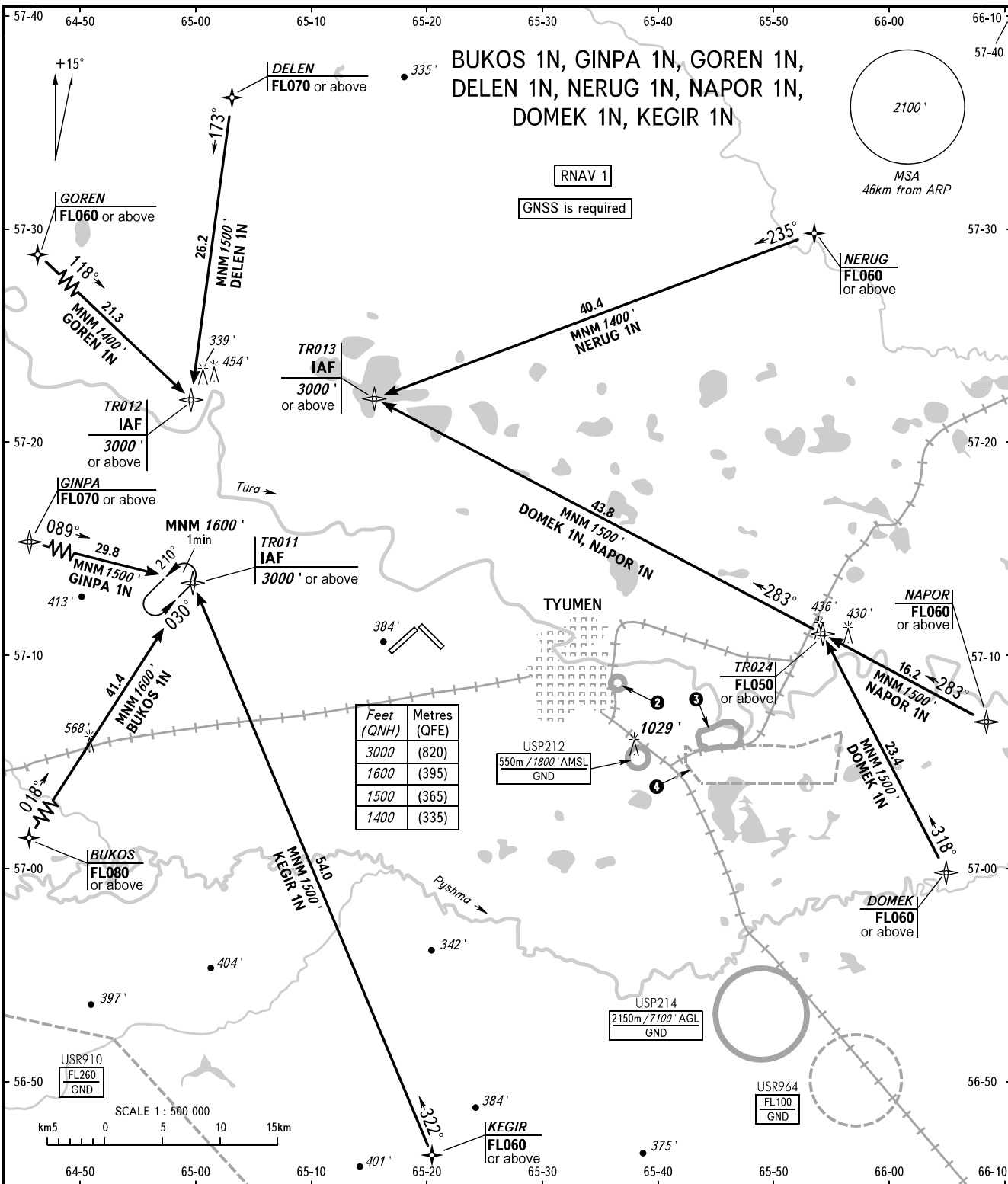


STANDARD ARRIVAL CHART  
INSTRUMENT (STAR) - ICAO

TYUMEN, RUSSIA  
ROSHCHINO  
RNAV RWY 12

TRANSITION  
LEVEL : **1**



START **118.200**  
RADAR **126.100**

**1** TRANSITION LEVEL:

- FL040 when QNH is 1013 hPa (760mm mercury column) or above;
- FL050 when QNH is 977 hPa (733mm mercury column) or above, but less than 1013 hPa (760mm mercury column);
- FL060 when QNH is less than 977 hPa (733mm mercury column).

**2** USP211  
550m / 1800' AMSL  
GND

**3** USP223  
900m / 3000' AGL  
GND

**4** USP913  
900m / 3000' AGL  
GND

BEARINGS AND TRACKS ARE MAGNETIC  
ALTITUDES AND ELEVATIONS IN FEET  
DISTANCES IN KILOMETRES

Alt set: -QNH(QFE on req);  
-hPa(mm on req).