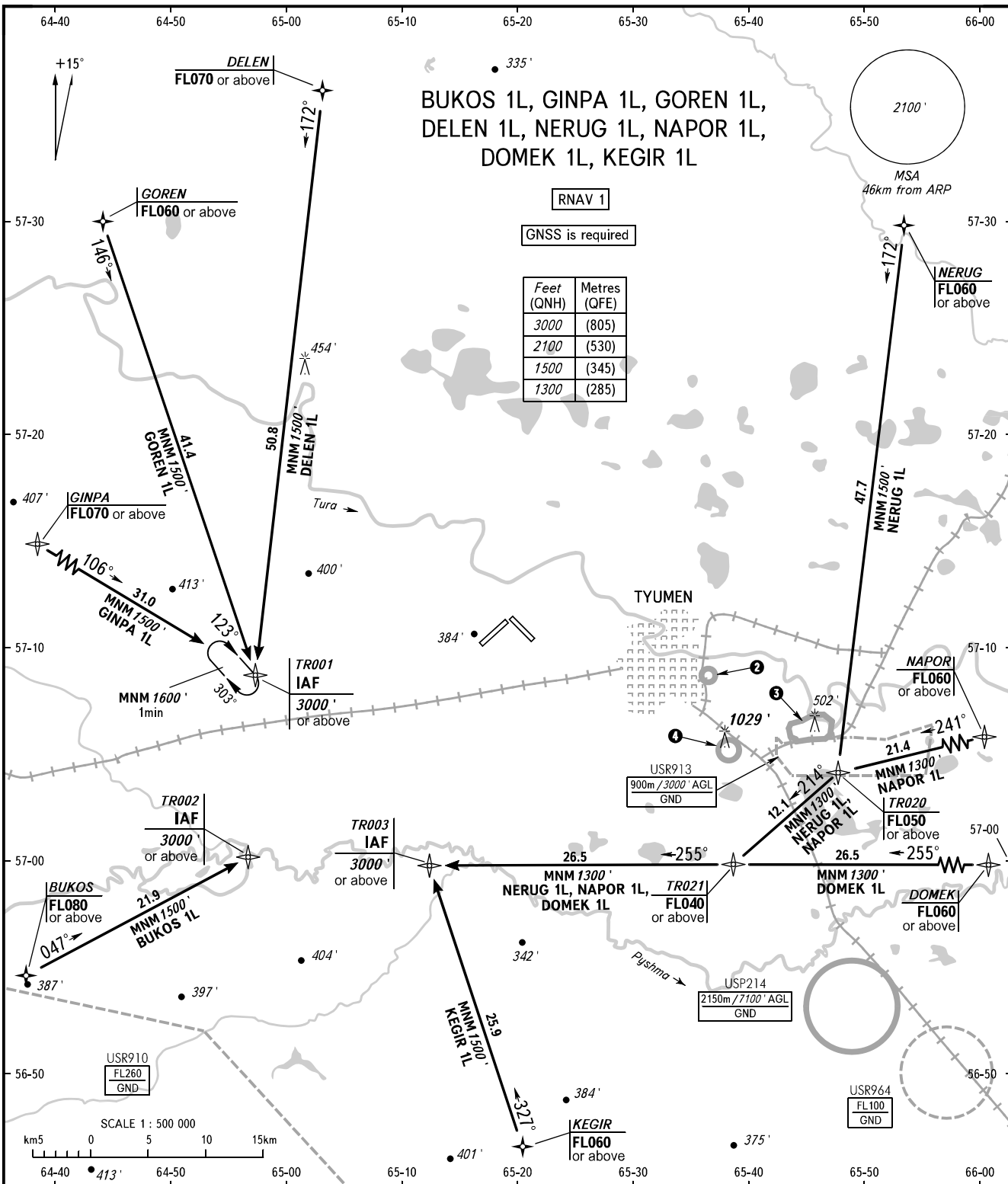


STANDARD ARRIVAL CHART
INSTRUMENT (STAR) - ICAO

TYUMEN, RUSSIA
ROSHCHINO
RNAV RWY 03

TRANSITION
LEVEL : **1**



START 118.200
RADAR 126.100

1 TRANSITION LEVEL:

- FL040 when QNH is 1013 hPa (760mm mercury column) or above;
- FL050 when QNH is 977 hPa (733mm mercury column) or above, but less than 1013 hPa (760mm mercury column);
- FL060 when QNH is less than 977 hPa (733mm mercury column).

2 USP211
550m / 1800' AMSL
GND

3 USP223
900m / 3000' AGL
GND

4 USP212
550m / 1800' AMSL
GND

BEARINGS AND TRACKS ARE MAGNETIC
ALTITUDES AND ELEVATIONS IN FEET
DISTANCES IN KILOMETRES

Alt set: -QNH(QFE on req);
-hPa(mm on req).