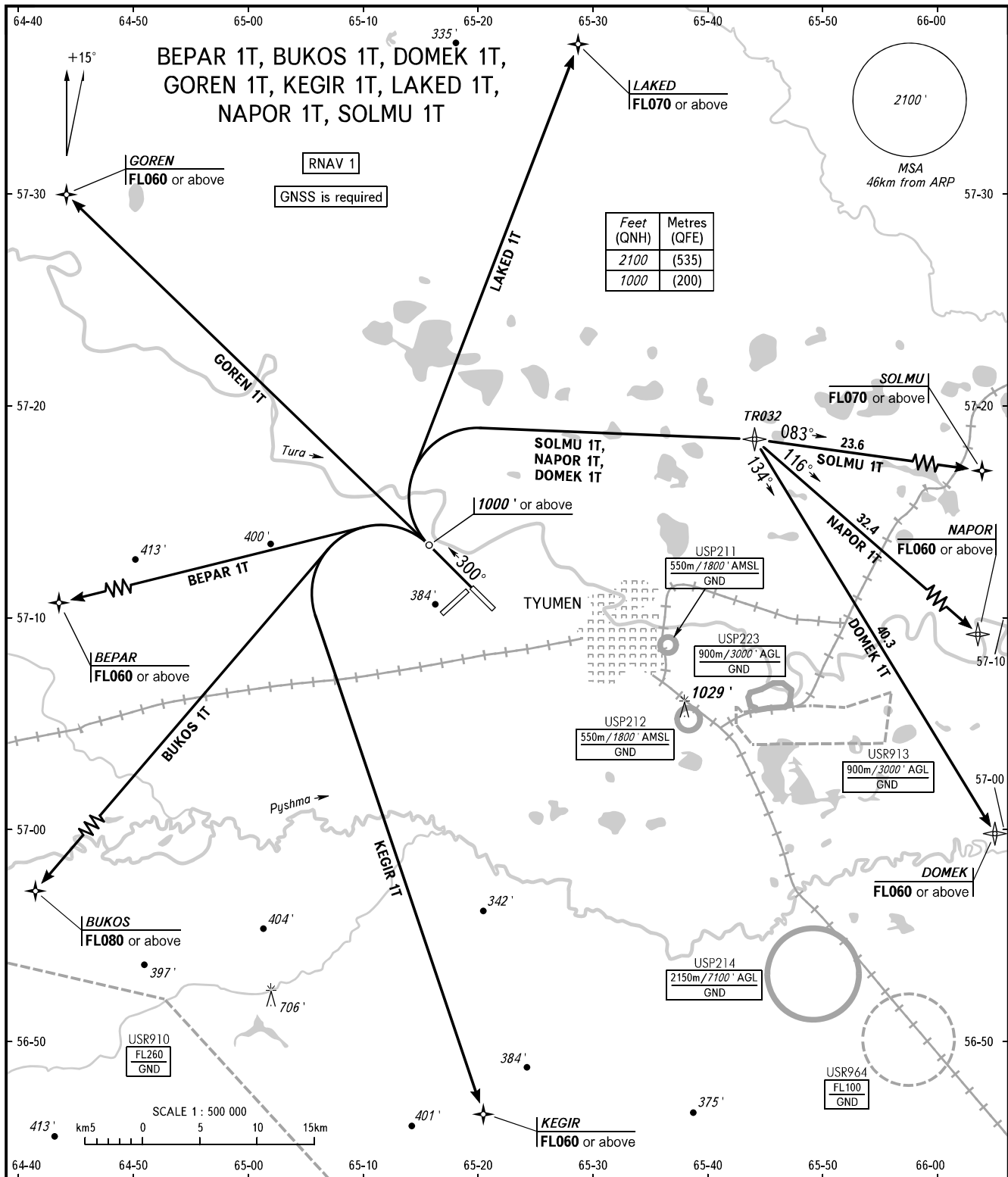


STANDARD DEPARTURE CHART
INSTRUMENT (SID) - ICAO

TRANSITION
ALTITUDE: 3000'

TYUMEN, RUSSIA
ROSHCHINO
RNAV RWY 30



START **118.200**
RADAR **126.100**

- WARNING:**
1. Turn before passing DER is PROHIBITED.
 2. The minimum climb gradients (required due to the airspace structure only) are as follows:
 - 3.8% up to FL080 for SID BUKOS 1T;
 - 3.5% up to FL060 for SID GOREN 1T;
 - 3.9% up to FL070 for SID LAKED 1T.

BEARINGS AND TRACKS ARE MAGNETIC
ALTITUDES AND ELEVATIONS IN FEET
DISTANCES IN KILOMETRES

Alt set: -QNH(QFE on req);
-hPa(mm on req).