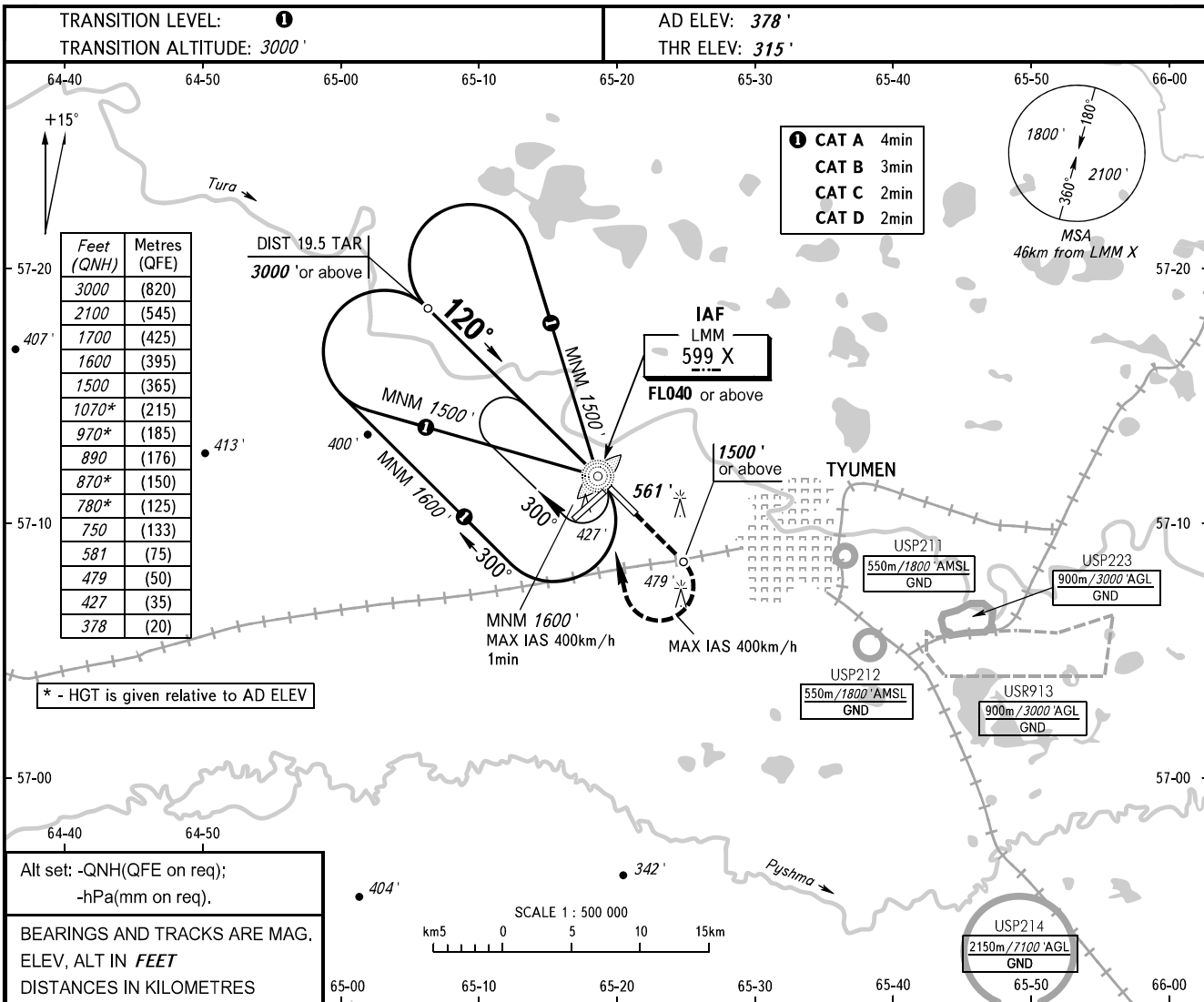


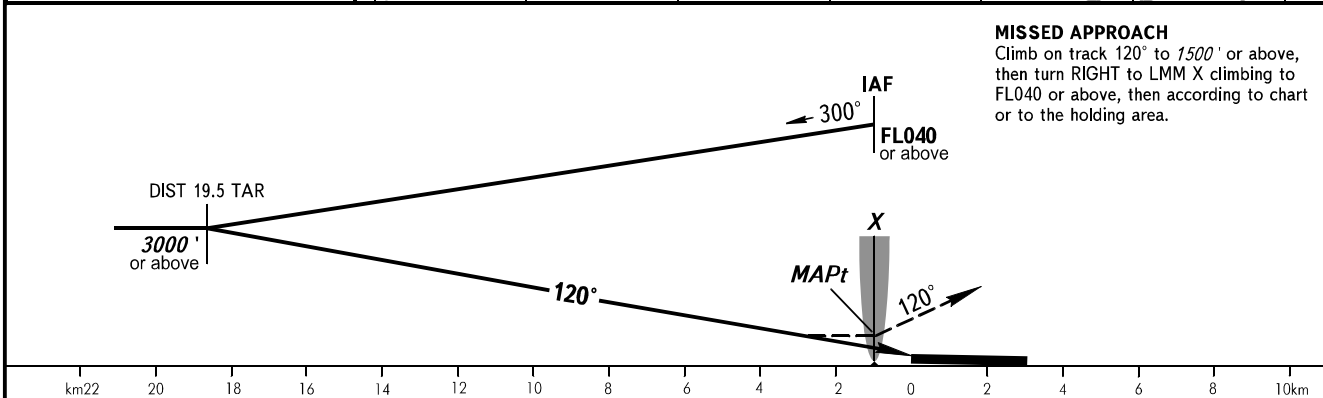
**INSTRUMENT
APPROACH
CHART - ICAO**

START	118.200
RADAR	126.100

**TYUMEN, RUSSIA
ROSHCHINO
NDB Z RWY 12**



MISSED APPROACH
Climb on track 120° to 1500' or above, then turn RIGHT to LMM X climbing to FL040 or above, then according to chart or to the holding area.



OCA(H)	A	B	C	D
Straight-in Approach	750' (440')	750' (440')	750' (440')	750' (440')
Circling	780' (410')	870' (500)	970' (600)	1070' (690')

1 TRANSITION LEVEL:
- FL040 when QNH is 1013 hPa (760mm mercury column) or above;
- FL050 when QNH is 977 hPa (733mm mercury column) or above, but less than 1013 hPa (760mm mercury column);
- FL060 when QNH is less than 977 hPa (733mm mercury column).

WARNING:
1. MAPt at LMM X. Timing not authorized for defining MAPt.
2. Turn before MAPt is PROHIBITED.

CHANGE: New chart