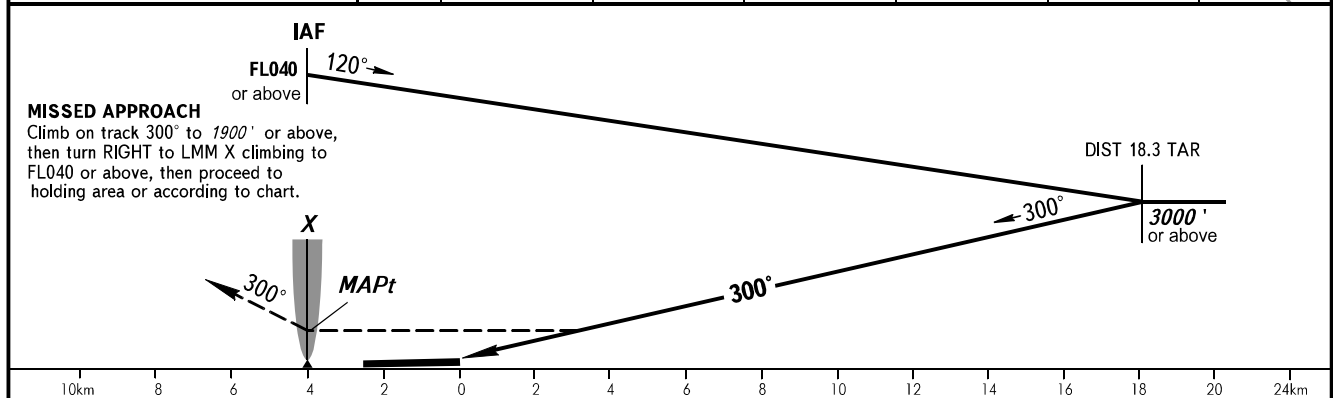
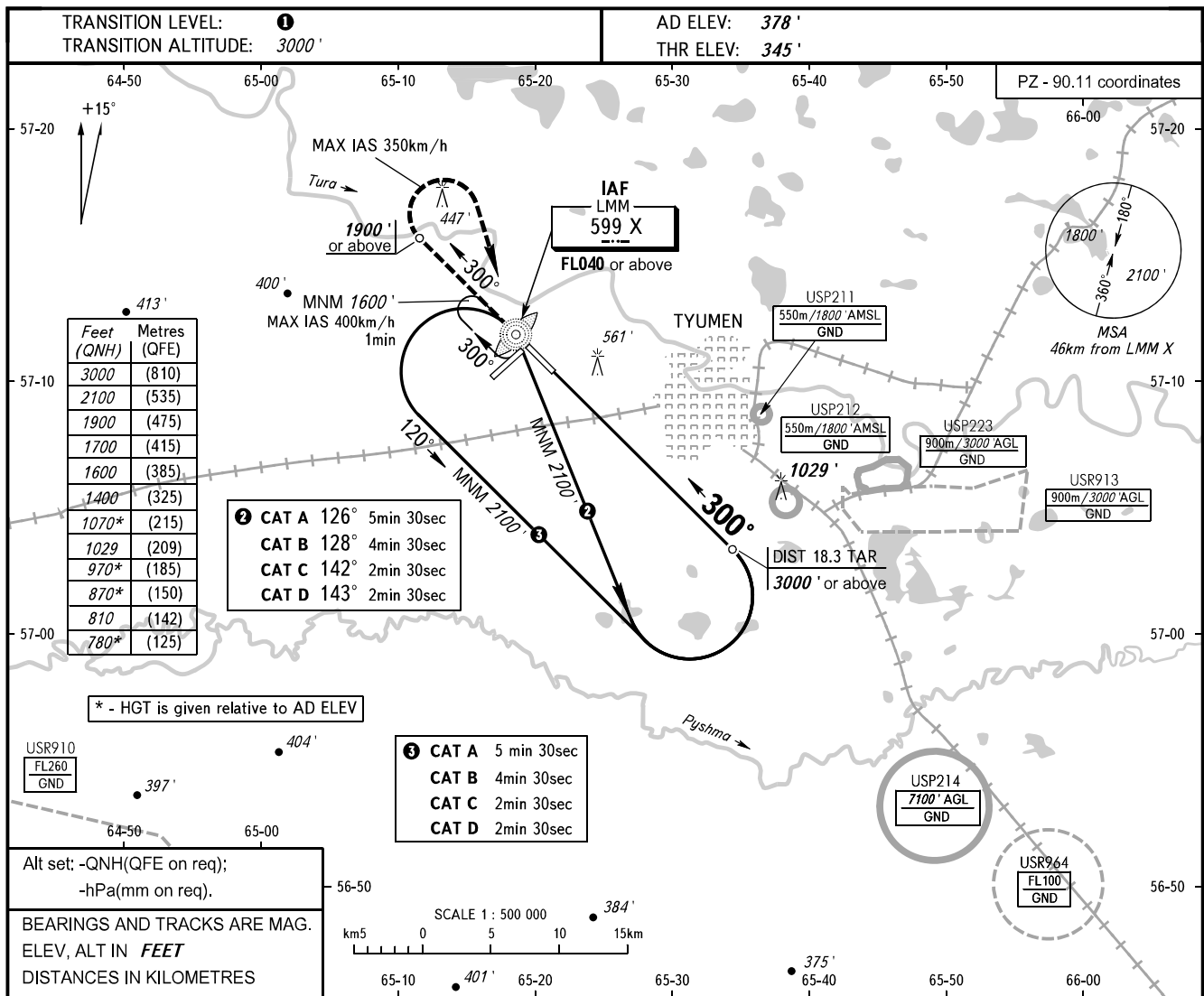


**INSTRUMENT  
APPROACH  
CHART - ICAO**

**TYUMEN, RUSSIA  
ROSHCHINO  
NDB Y RWY 30**

START RADAR 118.200  
RADAR 126.100



OCA(H)	A	B	C	D	① TRANSITION LEVEL: - FL040 when QNH is 1013 hPa (760mm mercury column) or above; - FL050 when QNH is 977 hPa (733mm mercury column) or above, but less than 1013 hPa (760mm mercury column); - FL060 when QNH is less than 977 hPa (733mm mercury column).
Straight-in Approach	1150' (810')	1150' (810')	1150' (810')	1150' (810')	
Circling	1150' (810')	1150' (810')	1150' (810')	1150' (810')	
					NOTE: 1. Turn before MAPt is PROHIBITED. 2. MAPt at LMM. Timing not authorized for defining MAPt.