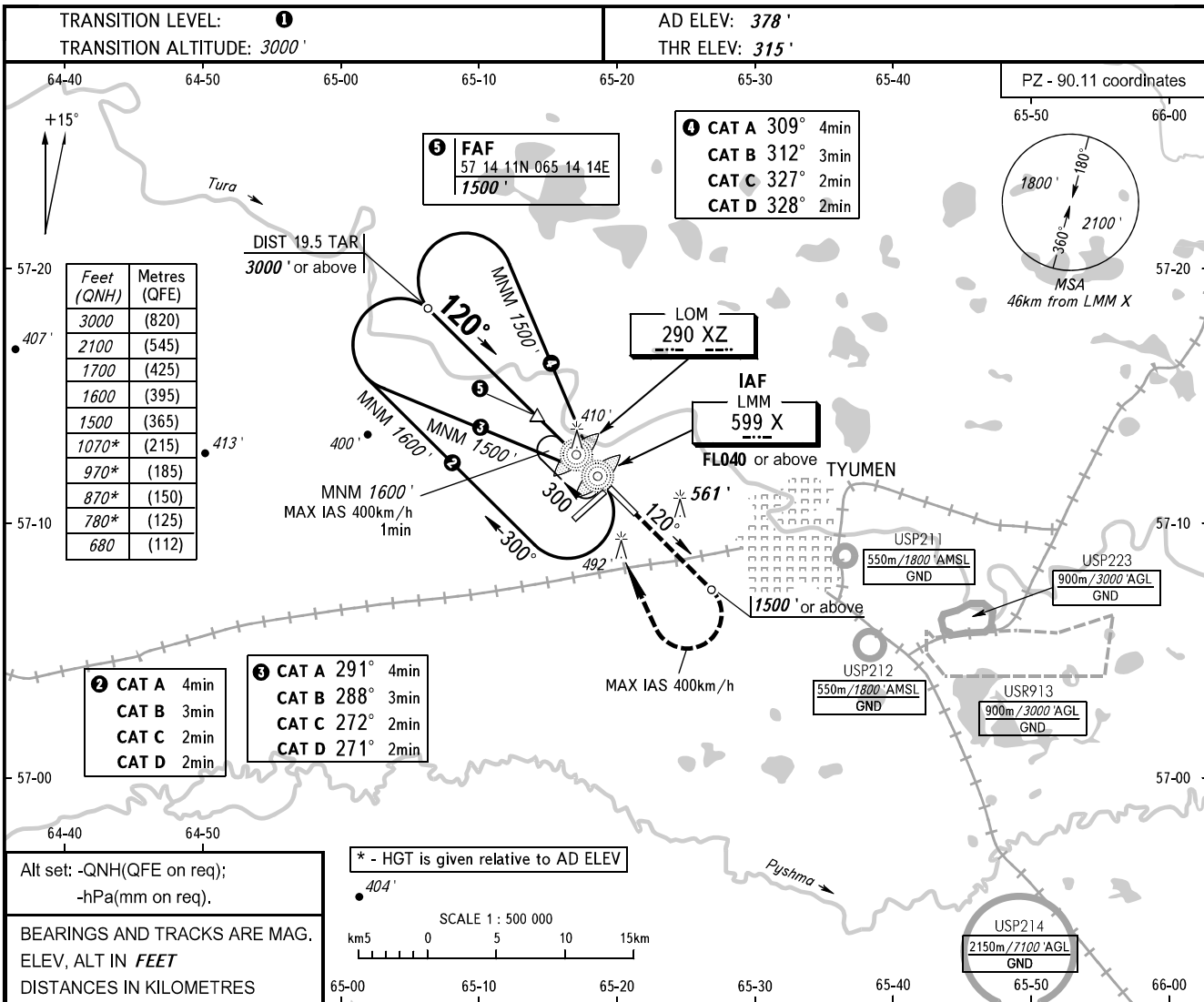


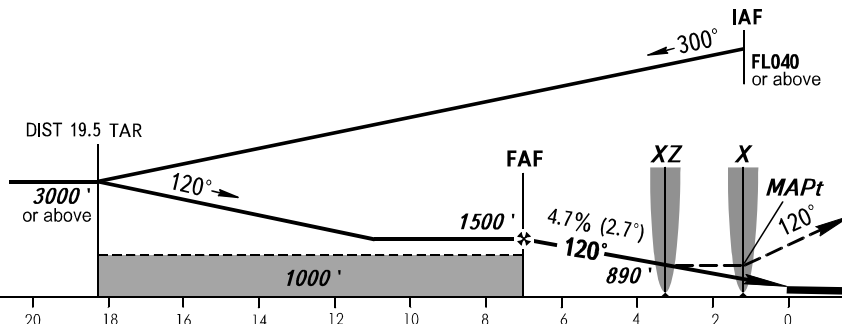
**INSTRUMENT  
APPROACH  
CHART - ICAO**

**TYUMEN, RUSSIA  
ROSHCHINO  
NDB Y RWY 12**

START **118.200**  
RADAR **126.100**



**MISSED APPROACH**  
Climb on track 120° to 1500' or above, then turn RIGHT to LMM X climbing to FL040 or above, then according to chart or to the holding area.



OCA(H)	A	B	C	D											
Straight-in Approach	660' (350')	660' (350')	660' (350')	660' (350')	<b>1</b> TRANSITION LEVEL: - FL040 when QNH is 1013 hPa (760mm mercury column) or above; - FL050 when QNH is 977 hPa (733mm mercury column) or above, but less than 1013 hPa (760mm mercury column); - FL060 when QNH is less than 977 hPa (733mm mercury column).  <b>NOTE:</b> 1. Turn before MAPt is PROHIBITED. 2. MAPt at LMM. Timing not authorized for defining MAPt.										
Circling	780' (410')	870' (500)	970' (600)	1070' (690')											
GROUND SPEED	km/h	150	180	210	240	270	300	330	360	390	420	450			
RATE OF DESCENT	m/s	2.0	2.4	2.7	3.1	3.5	3.9	4.3	4.7	5.1	5.5	5.9			
	ft/min	385	463	540	617	694	771	848	925	1002	1079	1156			

CHANGE: New chart