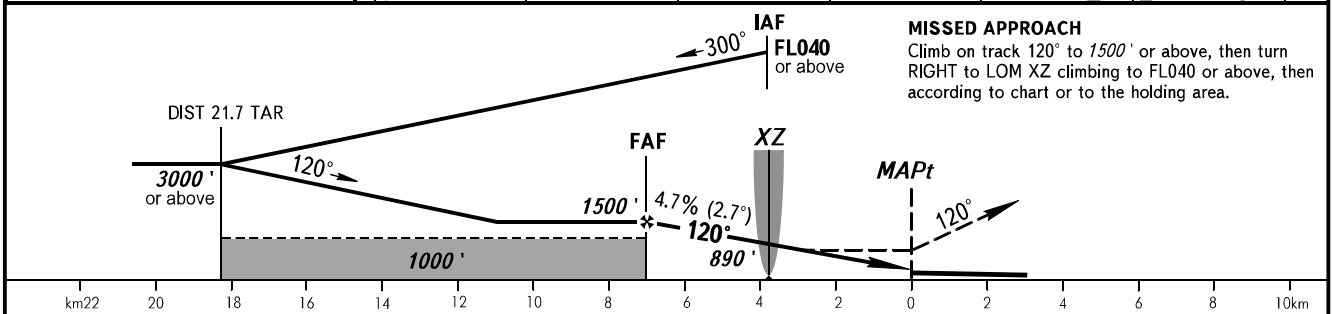
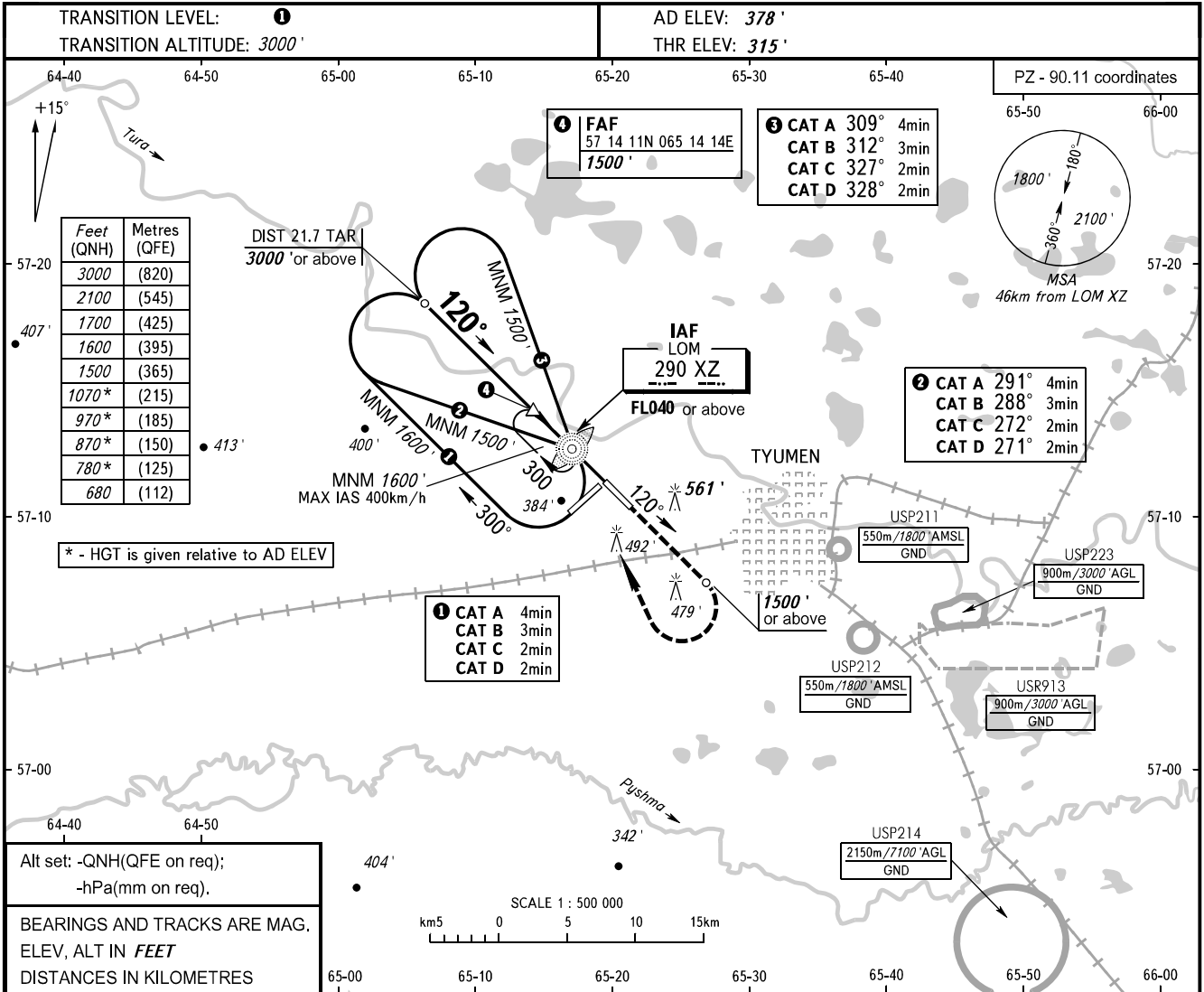


**INSTRUMENT
APPROACH
CHART - ICAO**

**TYUMEN, RUSSIA
ROSHCHINO
NDB X RWY 12**

| | |
|-------|---------|
| START | 118.200 |
| RADAR | 126.100 |



| OCA(H) | A | B | C | D |
|-------------|-------------|-------------|-------------|--------------|
| Straight-in | 680' (370') | 680' (370') | 680' (370') | 680' (370') |
| Approach | | | | |
| Circling | 780' (410') | 870' (500) | 970' (600) | 1070' (690') |

① TRANSITION LEVEL:
- FL040 when QNH is 1013 hPa (760mm mercury column) or above;
- FL050 when QNH is 977 hPa (733mm mercury column) or above, but less than 1013 hPa (760mm mercury column);
- FL060 when QNH is less than 977 hPa (733mm mercury column).

NOTE
Turn before MAPt is PROHIBITED.

| | | | | | | | | | | | | |
|------------------|---------|------|------|------|------|------|------|------|------|------|------|------|
| GROUND SPEED | km/h | 150 | 180 | 210 | 240 | 270 | 300 | 330 | 360 | 390 | 420 | 450 |
| FAF - MAPt 7360m | min:sec | 2:57 | 2:27 | 2:06 | 1:50 | 1:39 | 1:28 | 1:20 | 1:14 | 1:08 | 1:03 | 0:59 |
| RATE OF DESCENT | m/s | 2.0 | 2.4 | 2.7 | 3.1 | 3.5 | 3.9 | 4.3 | 4.7 | 5.1 | 5.5 | 5.9 |
| | ft/min | 385 | 463 | 540 | 617 | 694 | 771 | 848 | 925 | 1002 | 1079 | 1156 |

CHANGE: New chart