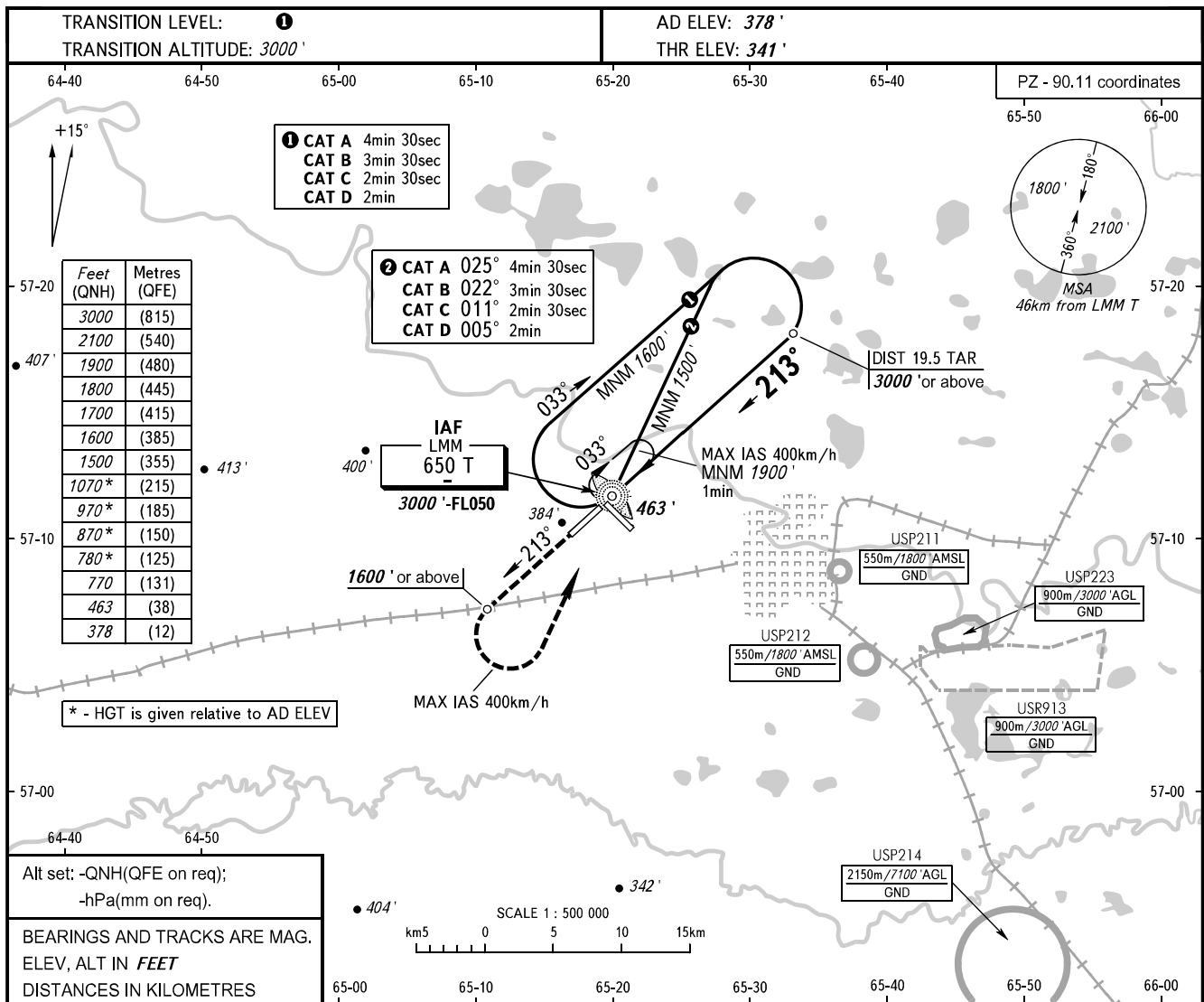


**INSTRUMENT
APPROACH
CHART - ICAO**

**TYUMEN, RUSSIA
ROSHCHINO
NDB Z RWY 21**

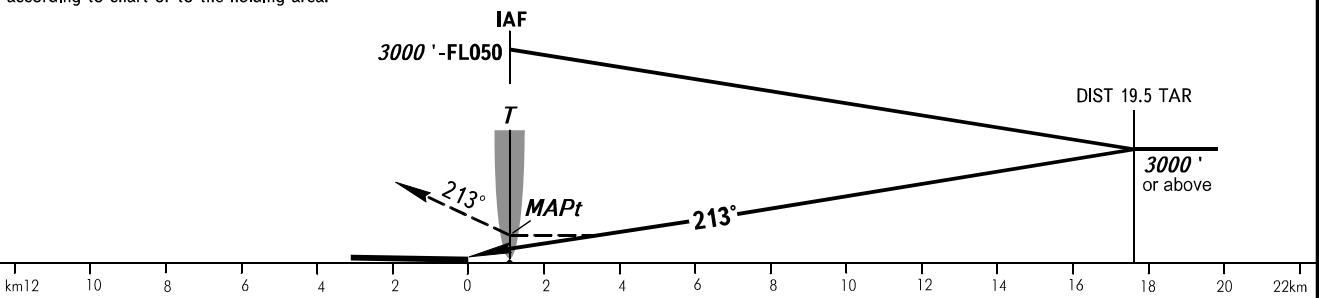
START **118.200**
RADAR **126.100**



MISSED APPROACH

Climb on track 213° to 1600' or above, then turn LEFT to LMM T climbing to 3000'-FL050, then according to chart or to the holding area.

MAPt at LMM T. Timing not authorized for defining MAPt.



| OCA(H) | | A | B | C | D |
|----------------------|--|-------------|-------------|-------------|--------------|
| Straight-in Approach | | 770' (430') | 770' (430') | 770' (430') | 770' (430') |
| | | | | | |
| Circling | | 780' (410') | 870' (500) | 970' (600) | 1070' (690') |

① TRANSITION LEVEL:
- FL040 when QNH is 1013 hPa (760mm mercury column) or above;
- FL050 when QNH is 977 hPa (733mm mercury column) or above, but less than 1013 hPa (760mm mercury column);
- FL060 when QNH is less than 977 hPa (733mm mercury column).

WARNING
Turn before MAPt is PROHIBITED.