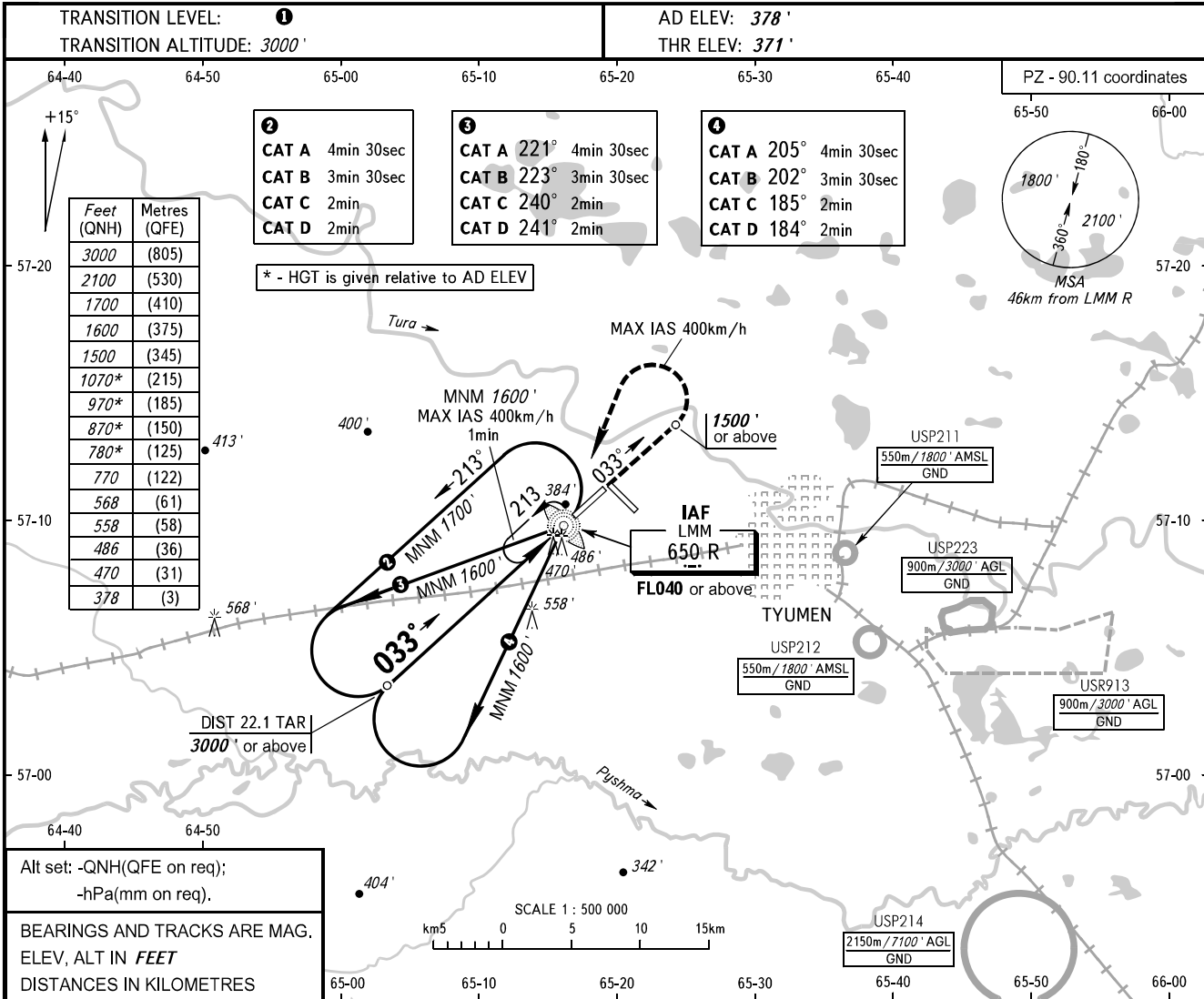


**INSTRUMENT
APPROACH
CHART - ICAO**

**TYUMEN, RUSSIA
ROSHCHINO
NDB Z RWY 03**

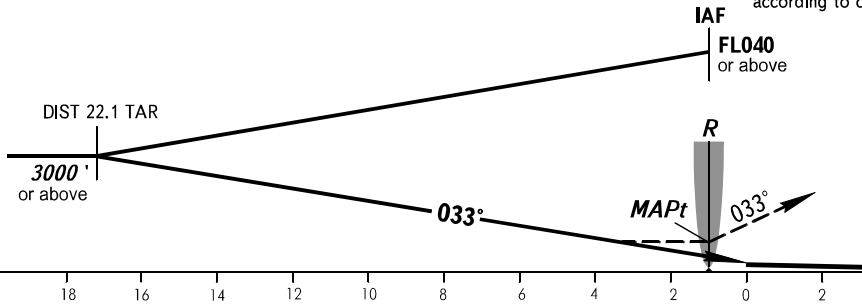
START **118.200**
RADAR **126.100**



MAPt at LMM R. Timing not authorized for defining MAPt.

MISSED APPROACH

Climb on track 033° to 1500' or above, then turn LEFT to LMM R climbing to FL040 or above, then according to chart or to the holding area.



OCA(H)	A	B	C	D
Straight-in Approach	770' (400')	770' (400')	770' (400')	770' (400')
Circling	780' (410')	870' (500')	970' (600')	1070' (690')

1 TRANSITION LEVEL:
- FL040 when QNH is 1013 hPa (760mm mercury column) or above;
- FL050 when QNH is 977 hPa (733mm mercury column) or above, but less than 1013 hPa (760mm mercury column);
- FL060 when QNH is less than 977 hPa (733mm mercury column).

WARNING
Turn before MAPt is PROHIBITED.

CHANGE: New chart