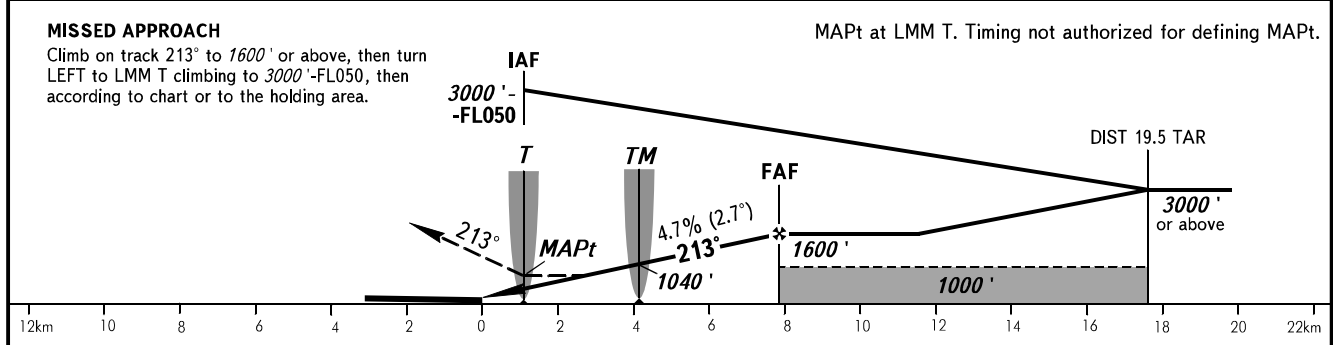
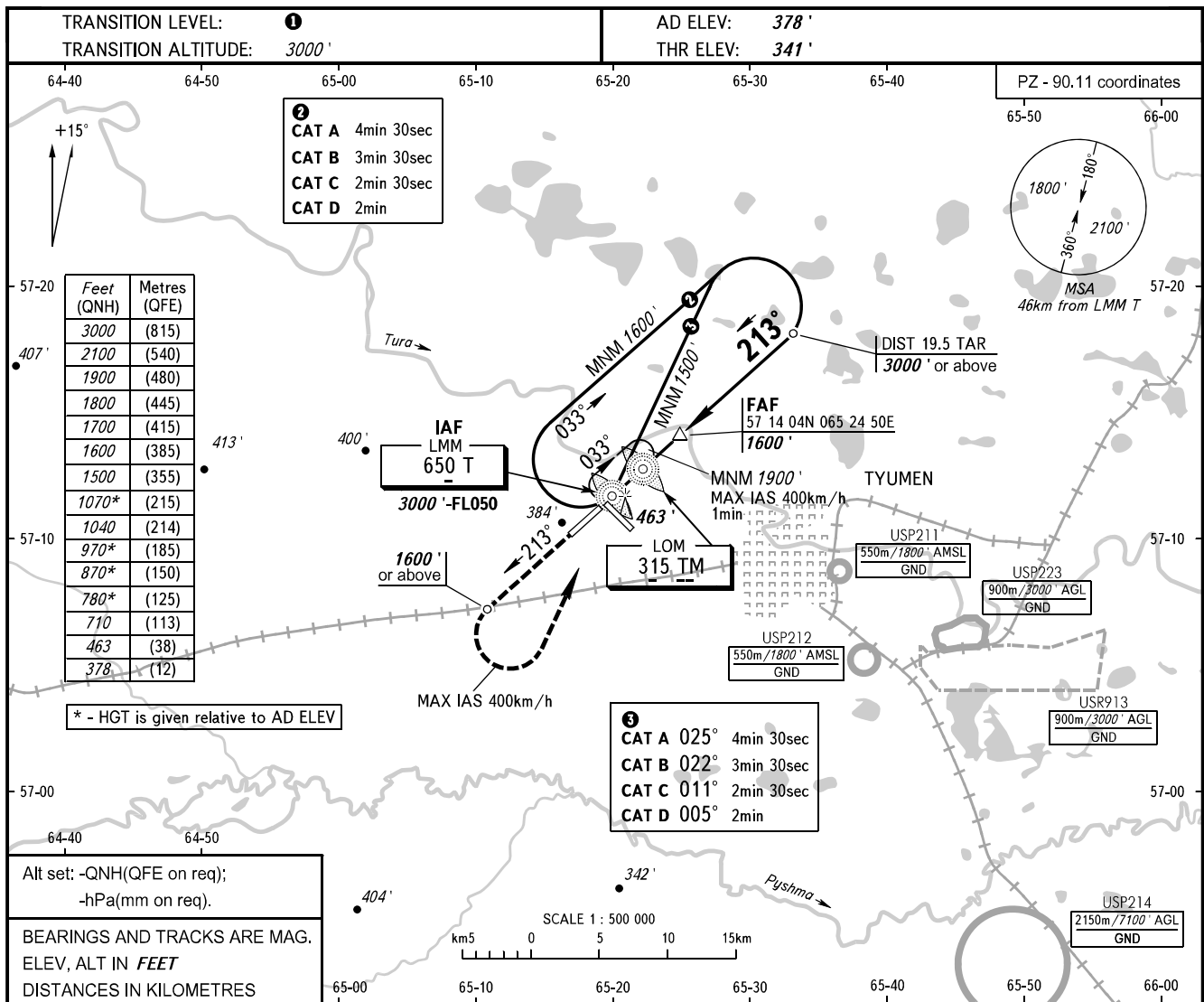


**INSTRUMENT  
APPROACH  
CHART - ICAO**

**TYUMEN, RUSSIA  
ROSHCHINO  
NDB Y RWY 21**

START **118.200**  
RADAR **126.100**



OCA(H)	A	B	C	D	1 TRANSITION LEVEL:							
Straight-in Approach	710' (380')	710' (380')	710' (380')	710' (380')	- FL040 when QNH is 1013 hPa (760mm mercury column) or above;							
					- FL050 when QNH is 977 hPa (733mm mercury column) or above, but less than 1013 hPa (760mm mercury column);							
Circling	780' (410')	870' (500)	970' (600)	1070' (690')	- FL060 when QNH is less than 977 hPa (733mm mercury column).							
					<b>WARNING</b> Turn before MAPt is PROHIBITED.							
GROUND SPEED	km/h	150	180	210	240	270	300	330	360	390	420	450
RATE OF DESCENT	m/s	2.0	2.4	2.7	3.1	3.5	3.9	4.3	4.7	5.1	5.5	5.9
	ft/min	385	463	540	617	694	771	848	925	1002	1079	1156