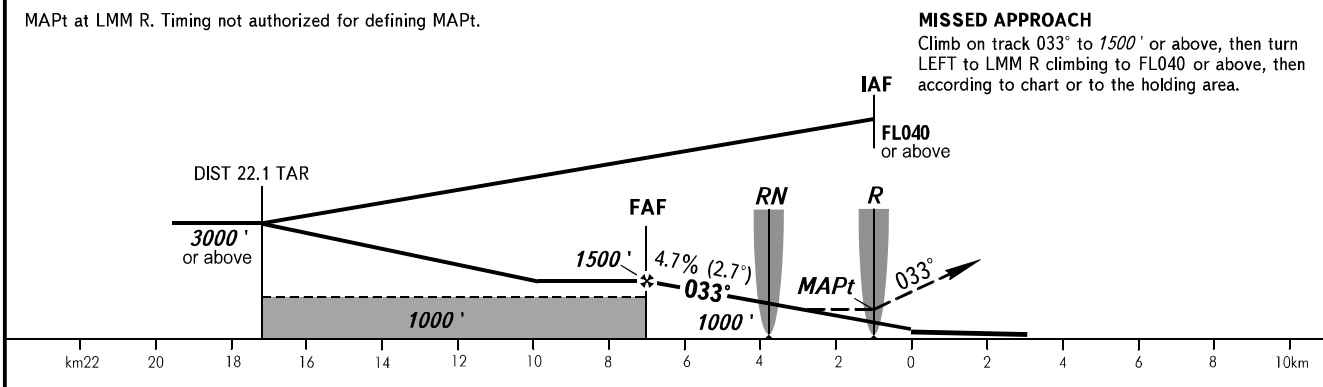
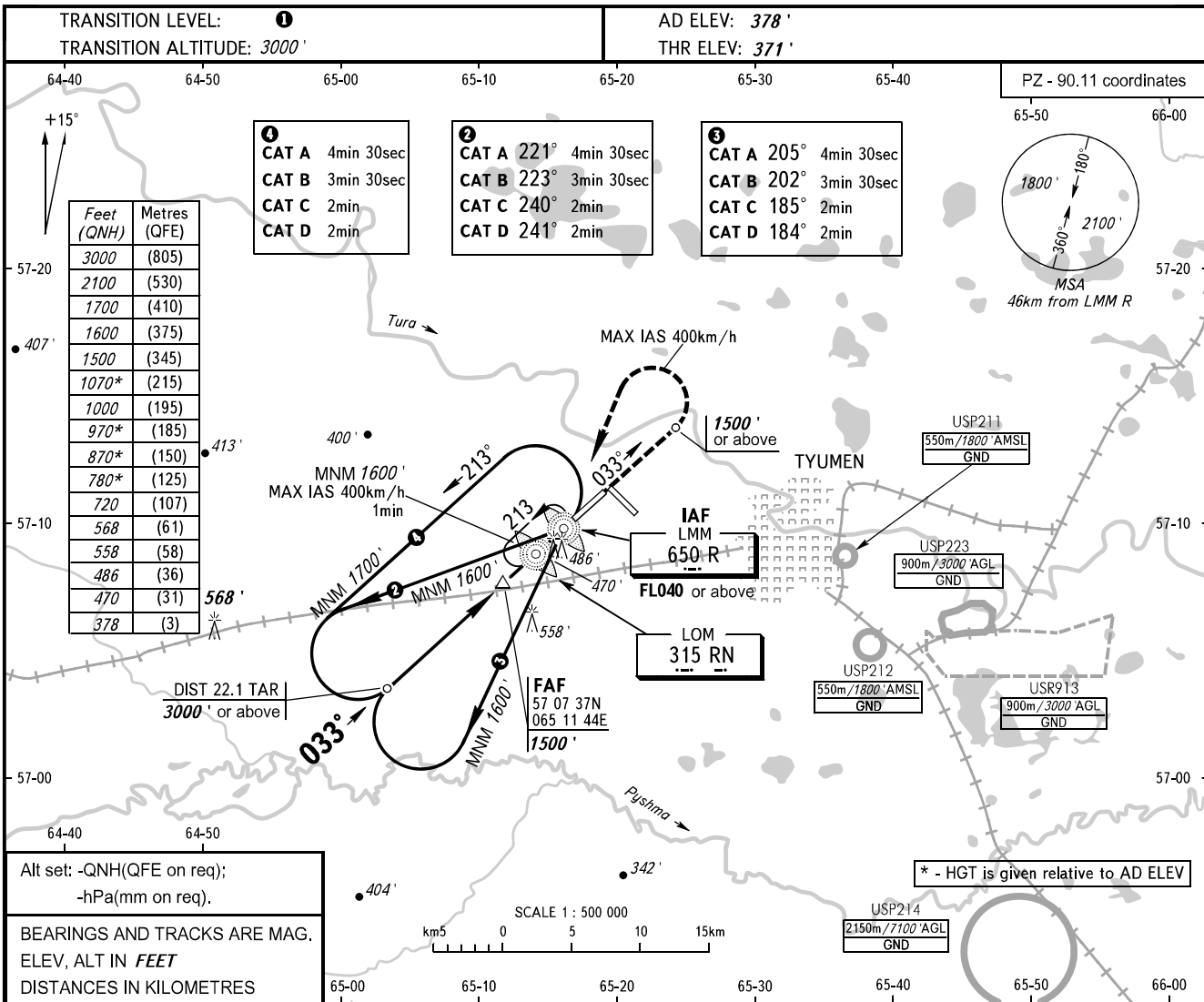


**INSTRUMENT
APPROACH
CHART - ICAO**

START **118.200**
RADAR **126.100**

**TYUMEN, RUSSIA
ROSHCHINO
NDB Y RWY 03**



| OCA(H) | A | B | C | D | TRANSITION LEVEL: - FL040 when QNH is 1013 hPa (760mm mercury column) or above; - FL050 when QNH is 977 hPa (733mm mercury column) or above, but less than 1013 hPa (760mm mercury column); - FL060 when QNH is less than 977 hPa (733mm mercury column). | | | | | | | | | | | |
|----------------------|-------------|-------------|-------------|--------------|--|-----|-----|-----|-----|------|------|------|--|--|--|--|
| Straight-in Approach | 720' (350') | 720' (350') | 720' (350') | 720' (350') | WARNING Turn before MAPt is PROHIBITED. | | | | | | | | | | | |
| Circling | 780' (410') | 870' (500') | 970' (600') | 1070' (690') | | | | | | | | | | | | |
| GROUND SPEED | km/h | 150 | 180 | 210 | 240 | 270 | 300 | 330 | 360 | 390 | 420 | 450 | | | | |
| RATE OF DESCENT | m/s | 2.0 | 2.4 | 2.7 | 3.1 | 3.5 | 3.9 | 4.3 | 4.7 | 5.1 | 5.5 | 5.9 | | | | |
| | ft/min | 385 | 463 | 540 | 617 | 694 | 771 | 848 | 925 | 1002 | 1079 | 1156 | | | | |

CHANGE: New chart