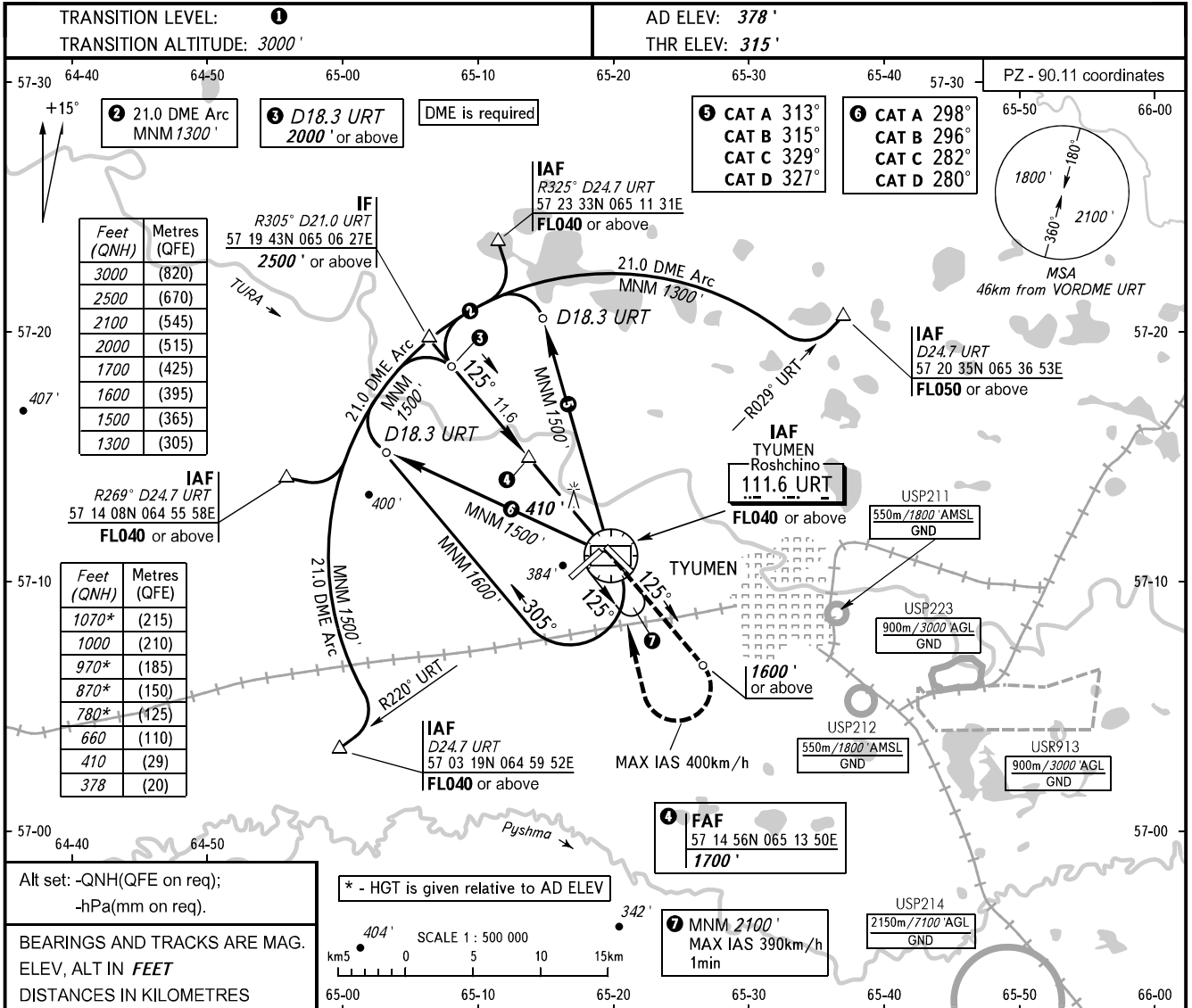


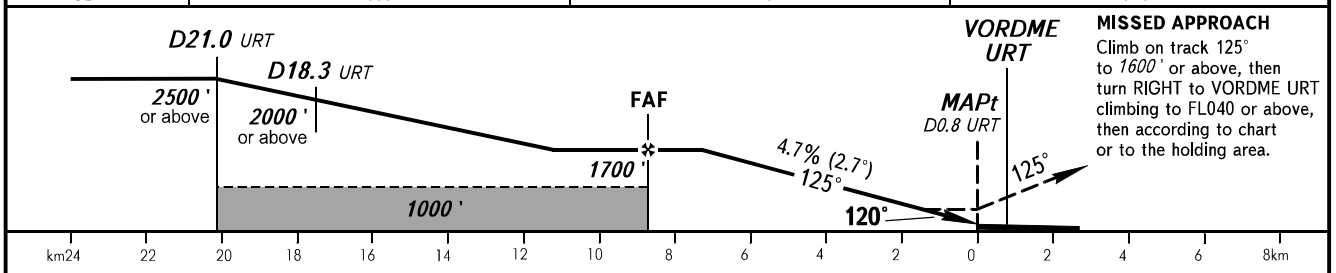
**INSTRUMENT
APPROACH
CHART - ICAO**

**TYUMEN, RUSSIA
ROSHCHINO
VOR RWY 12**

START **118.200**
RADAR **126.100**



DME URT	9.0	7.0	5.0
ALTITUDE	1630'	1270'	910'



OCA(H)	A	B	C	D
Straight-in Approach	660' (350')	660' (350')	660' (350')	660' (350')
Circling	780' (410')	870' (500)	970' (600)	1070' (690')

1 TRANSITION LEVEL:
 - FL040 when QNH is 1013 hPa (760mm mercury column) or above;
 - FL050 when QNH is 977 hPa (733mm mercury column) or above, but less than 1013 hPa (760mm mercury column);
 - FL060 when QNH is less than 977 hPa (733mm mercury column).
WARNING:
 1. Final approach track is offset by 5° from RCL.
 2. Turn before passing MAPt is PROHIBITED.
 3. Timing not authorized for defining MAPt.

GROUND SPEED	km/h	150	180	210	240	270	300	330	360	390	420	450
	m/s	2.0	2.4	2.7	3.1	3.5	3.9	4.3	4.7	5.1	5.5	5.9
RATE OF DESCENT	ft/min	385	463	540	617	694	771	848	925	1002	1079	1156

CHANGE: New chart