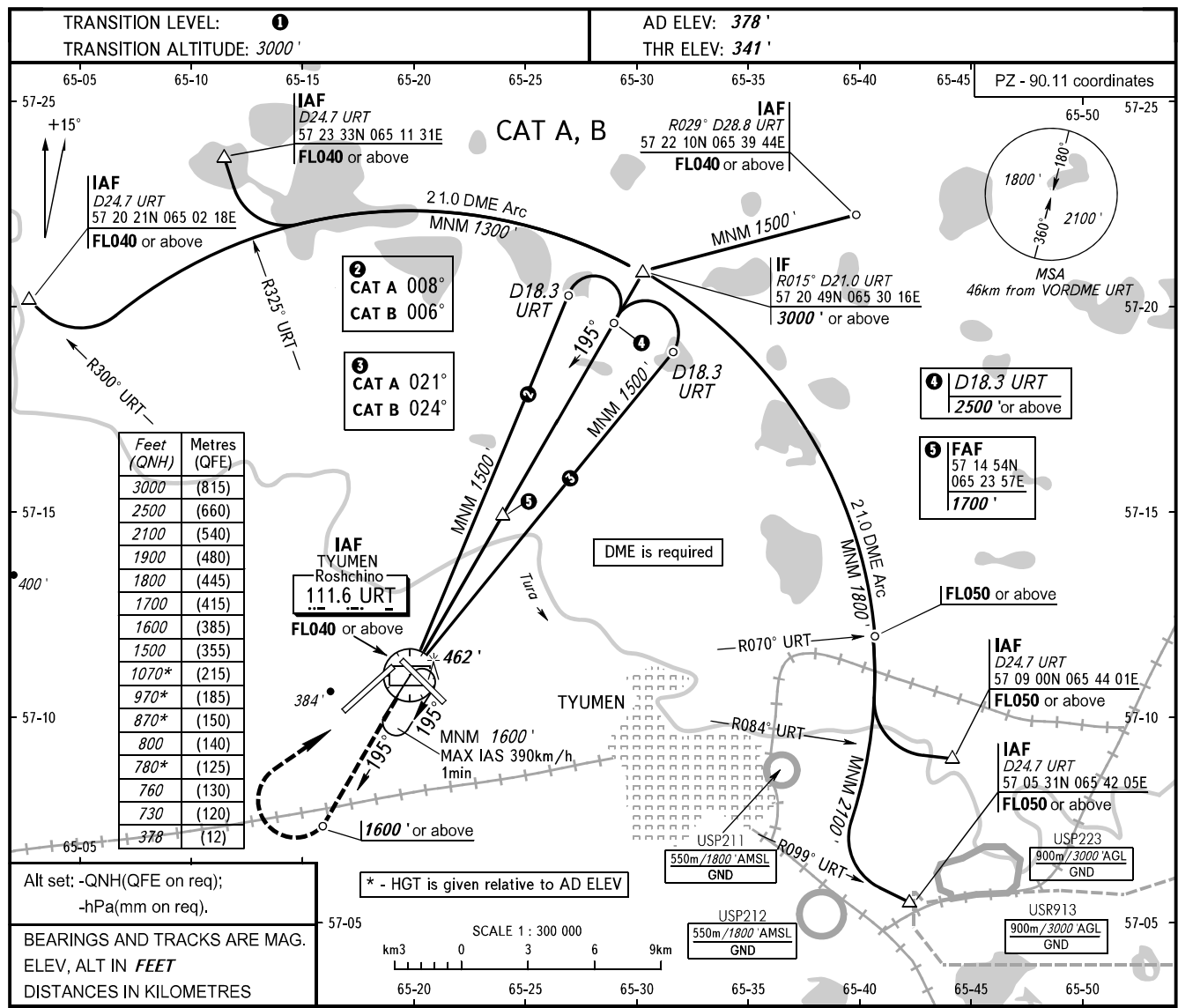


**INSTRUMENT
APPROACH
CHART - ICAO**

**TYUMEN, RUSSIA
ROSHCHINO
VOR RWY 21**

START **118.200**
RADAR **126.100**



Feet (QNH)	Metres (QFE)
3000	(815)
2500	(660)
2100	(540)
1900	(480)
1800	(445)
1700	(415)
1600	(385)
1500	(355)
1070*	(215)
970*	(185)
870*	(150)
800	(140)
780*	(125)
760	(130)
730	(120)
378	(12)

Alt set: -QNH(QFE on req);
-hPa(mm on req).

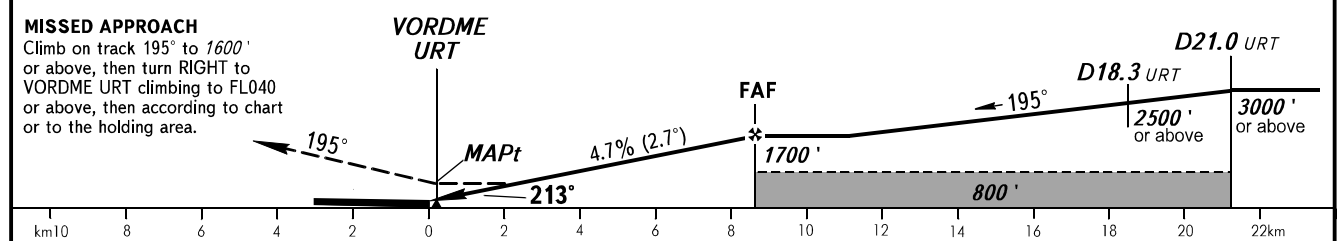
BEARINGS AND TRACKS ARE MAG.
ELEV, ALT IN FEET
DISTANCES IN KILOMETRES

SCALE 1 : 300 000

km 0 3 6 9

65-20 65-25 65-30 65-35 65-40 65-45 65-50

DME URT	2.0	4.0	6.0	8.0
ALTITUDE	410'	820'	1230'	1640'



OCA(H)		A	B	C	D	① TRANSITION LEVEL: - FL040 when QNH is 1013 hPa (760mm mercury column) or above; - FL050 when QNH is 977 hPa (733mm mercury column) or above, but less than 1013 hPa (760mm mercury column); - FL060 when QNH is less than 977 hPa (733mm mercury column).										
Straight-in Approach		730' (380')	760' (410')			WARNING: 1. Turn before MAPt is prohibited. 2. Final approach track is offset by 18° from the RCL.										
	Circling	780' (410')	870' (500')													
GROUND SPEED		km/h	150	180	210	240	270	300	330	360	390	420	450			
RATE OF DESCENT		m/s	2.0	2.4	2.7	3.1	3.5	3.9	4.3	4.7	5.1	5.5	5.9			
		ft/min	385	463	540	617	694	771	848	925	1002	1079	1156			