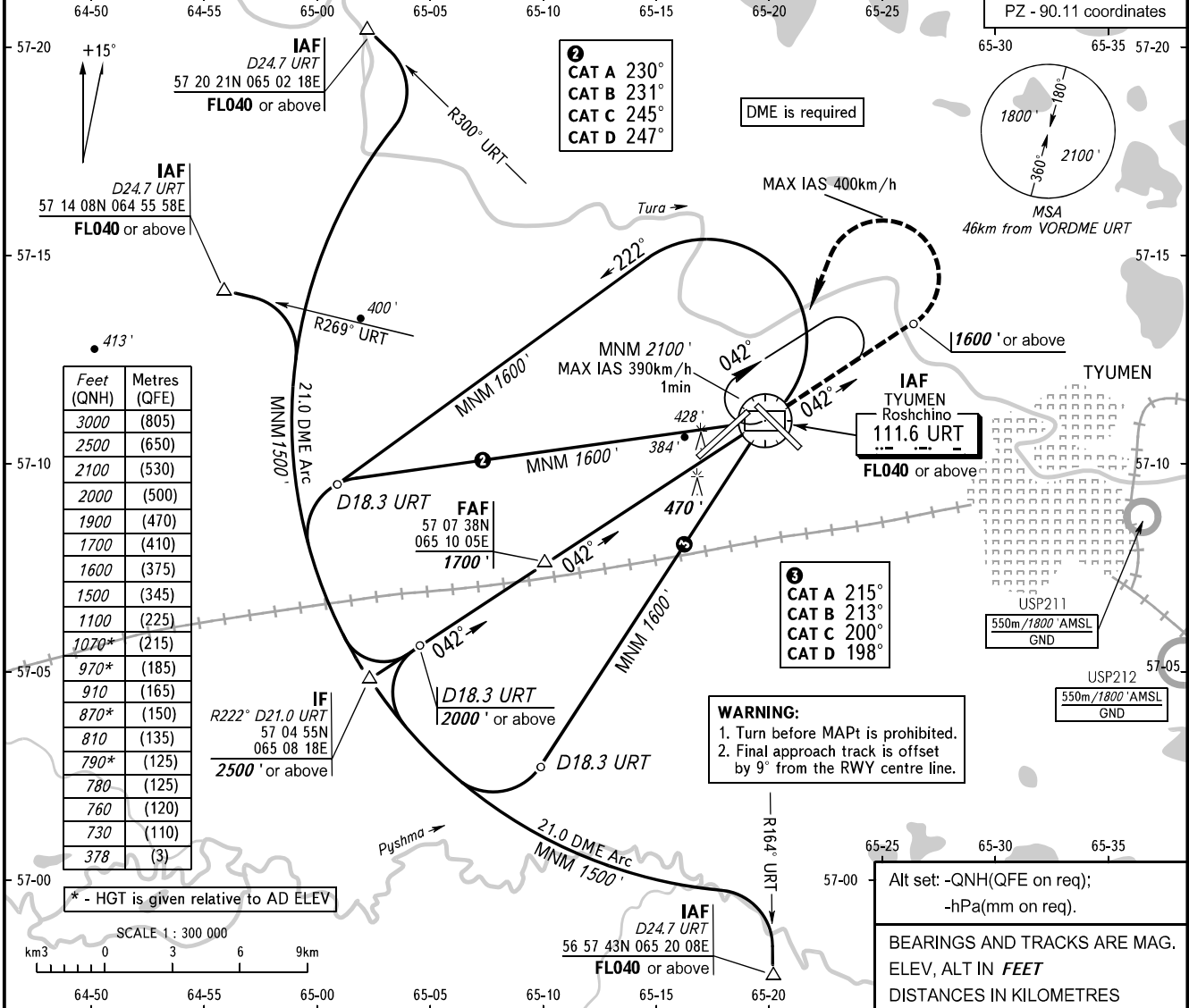


**INSTRUMENT
APPROACH
CHART - ICAO**

**TYUMEN, RUSSIA
ROSHCHINO
VOR RWY 03**

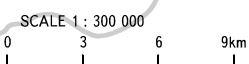
START RADAR **118.200**
RADAR **126.100**

TRANSITION LEVEL: **01**
TRANSITION ALTITUDE: **3000'**
AD ELEV: **378'**
THR ELEV: **371'**



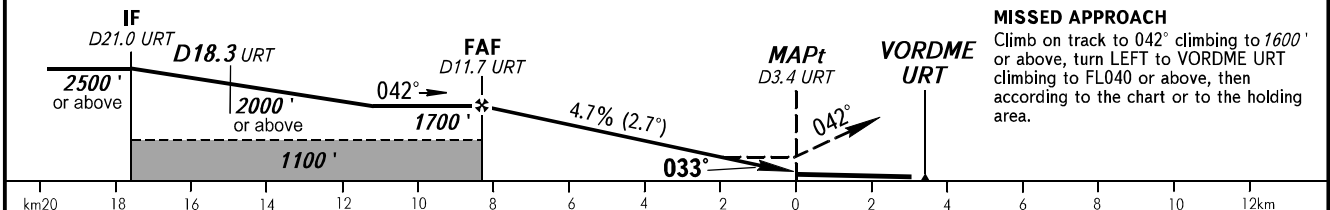
Feet (QNH)	Metres (QFE)
3000	(805)
2500	(650)
2100	(530)
2000	(500)
1900	(470)
1700	(410)
1600	(375)
1500	(345)
1100	(225)
1070*	(215)
970*	(185)
910	(165)
870*	(150)
810	(135)
790*	(125)
780	(125)
760	(120)
730	(110)
378	(3)

* - HGT is given relative to AD ELEV



Alt set: -QNH(QFE on req);
-hPa(mm on req).
BEARINGS AND TRACKS ARE MAG.
ELEV, ALT IN FEET
DISTANCES IN KILOMETRES

DME URT	11.0	10.0	8.0	6.0
ALTITUDE	1610'	1460'	1170'	880'



MISSED APPROACH
Climb on track to 042° climbing to 1600' or above, turn LEFT to VORDME URT climbing to FL040 or above, then according to the chart or to the holding area.

OCA(H)	A	B	C	D
Straight-in Approach	730' (350')	760' (380')	790' (410')	810' (430')
Circling	780' (410')	870' (500)	970' (600)	1070' (690')

1 TRANSITION LEVEL:
- FL040 when QNH is 1013 hPa (760mm mercury column) or above;
- FL050 when QNH is 977 hPa (733mm mercury column) or above, but less than 1013 hPa (760mm mercury column);
- FL060 when QNH is less than 977 hPa (733mm mercury column).
MAPt at D3.4 URT. Timing not authorized for defing MAPt.

GROUND SPEED	km/h	150	180	210	240	270	300	330	360	390	420	450
		RATE OF DESCENT	m/s	2.0	2.4	2.7	3.1	3.5	3.9	4.3	4.7	5.1
	ft/min	385	463	540	617	694	771	848	925	1002	1079	1156

CHANGE: New chart