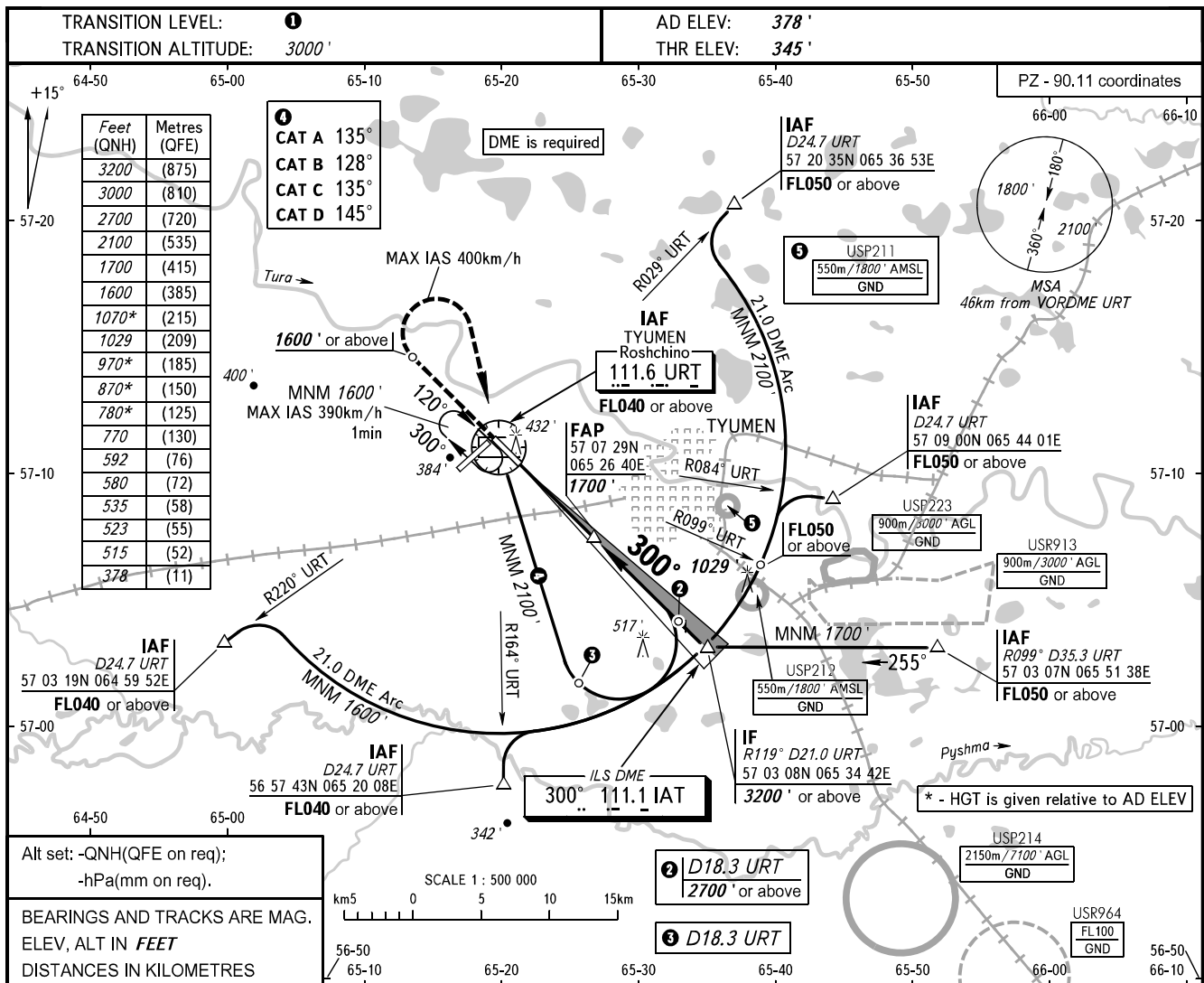


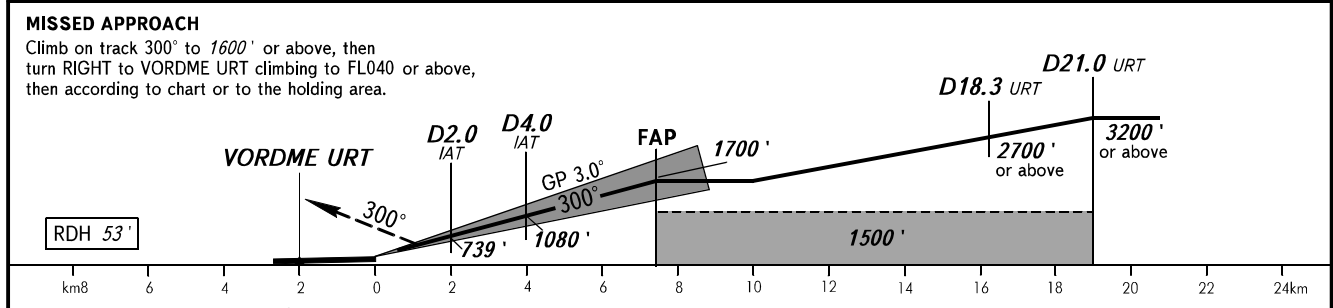
**INSTRUMENT
APPROACH
CHART - ICAO**

START **118.200**
RADAR **126.100**

TYUMEN, RUSSIA
ROSHCHINO
ILS Y RWY 30 CAT I



| | | | | |
|----------|------|-------|-------|-------|
| DME URT | 2.0 | 4.0 | 6.0 | 7.0 |
| ALTITUDE | 739' | 1080' | 1421' | 1593' |



| OCA(H) | | A | B | C | D |
|----------------------|-------|-------------|-------------|-------------|--------------|
| Straight-in Approach | CAT I | 523' (178') | 535' (190') | 580' (235') | 592' (245') |
| | | | | | |
| Circling | | 780' (410') | 870' (500) | 970' (600) | 1070' (690') |

1 TRANSITION LEVEL:
- FL040 when QNH is 1013 hPa (760mm mercury column) or above;
- FL050 when QNH is 977 hPa (733mm mercury column) or above, but less than 1013 hPa (760mm mercury column);
- FL060 when QNH is less than 977 hPa (733mm mercury column).

WARNING
Zero range of DME IAT is indicated at RWY 30 THR.

| | | | | | | | | | | | | |
|-----------------|--------|-----|-----|-----|-----|-----|-----|-----|-----|------|------|------|
| GROUND SPEED | km/h | 150 | 180 | 210 | 240 | 270 | 300 | 330 | 360 | 390 | 420 | 450 |
| RATE OF DESCENT | m/s | 2.2 | 2.6 | 3.0 | 3.5 | 3.9 | 4.3 | 4.8 | 5.2 | 5.6 | 6.1 | 6.5 |
| | ft/min | 427 | 512 | 597 | 640 | 682 | 768 | 853 | 938 | 1024 | 1103 | 1182 |