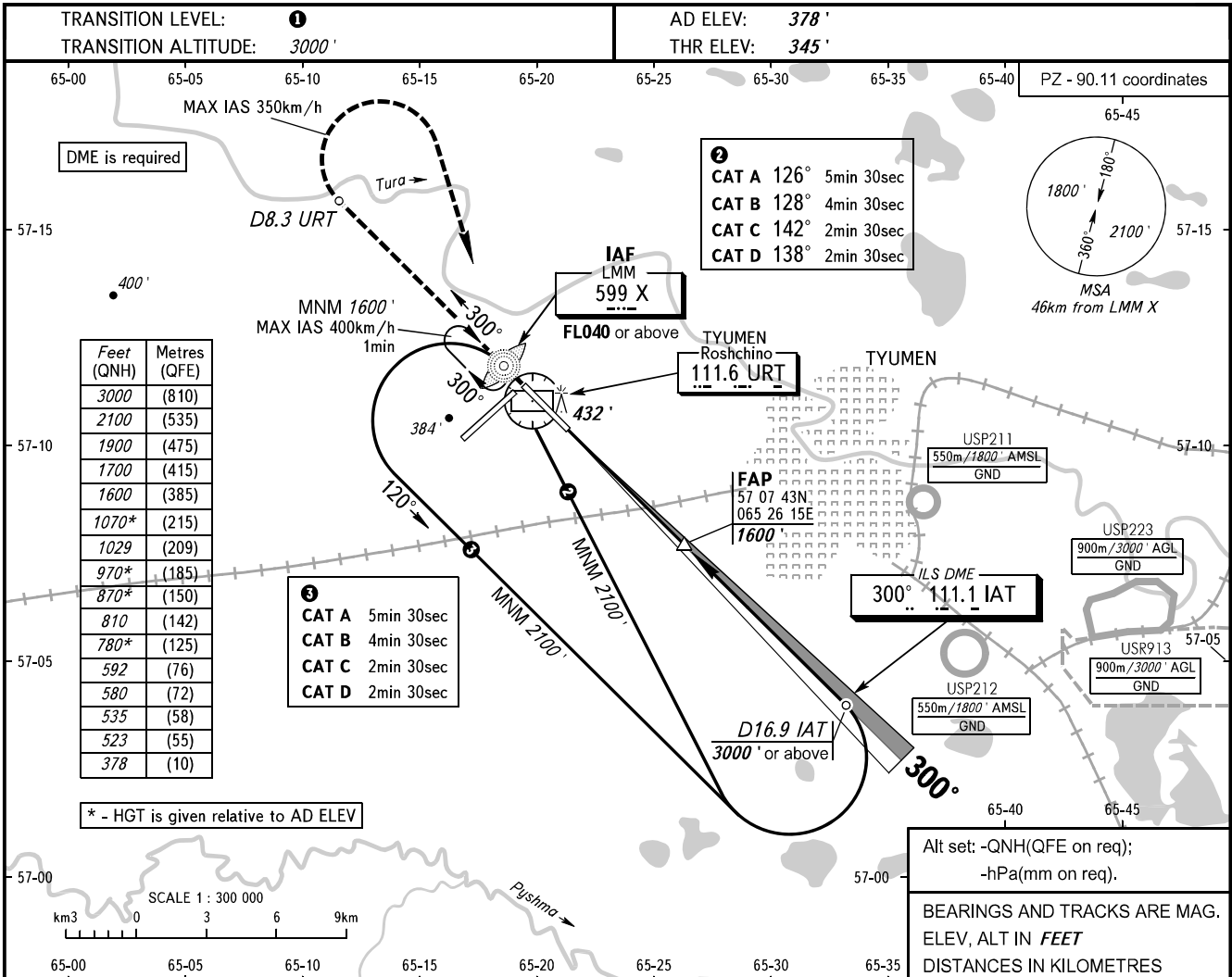


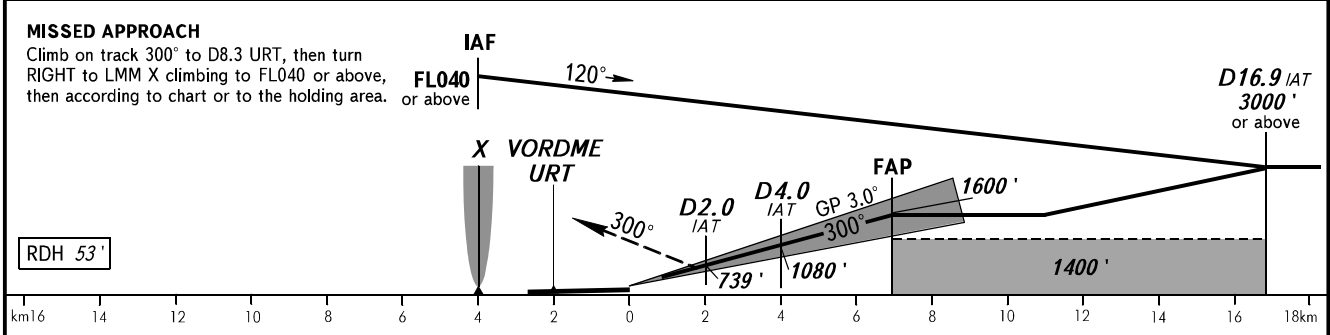
**INSTRUMENT
APPROACH
CHART - ICAO**

**TYUMEN, RUSSIA
ROSHCHINO
ILS X RWY 30 CAT I**

START **118.200**
RADAR **126.100**



DME IAT	2.0	4.0	6.0	7.0
ALTITUDE	739'	1080'	1421'	1593'



OCA(H)		A	B	C	D
Straight-in Approach	CAT I	523' (178')	535' (190')	580' (235')	592' (245')
Circling		780' (410')	870' (500)	970' (600)	1070' (690')

1 **TRANSITION LEVEL:**
- FL040 when QNH is 1013 hPa (760mm mercury column) or above;
- FL050 when QNH is 977 hPa (733mm mercury column) or above, but less than 1013 hPa (760mm mercury column);
- FL060 when QNH is less than 977 hPa (733mm mercury column).

WARNING
Zero range of DME IAT is indicated at RWY 30 THR.

GROUND SPEED	km/h	150	180	210	240	270	300	330	360	390	420	450
	m/s	2.2	2.6	3.0	3.5	3.9	4.3	4.8	5.2	5.6	6.1	6.5
RATE OF DESCENT	ft/min	427	512	597	640	682	768	853	938	1024	1103	1182

CHANGE: New chart