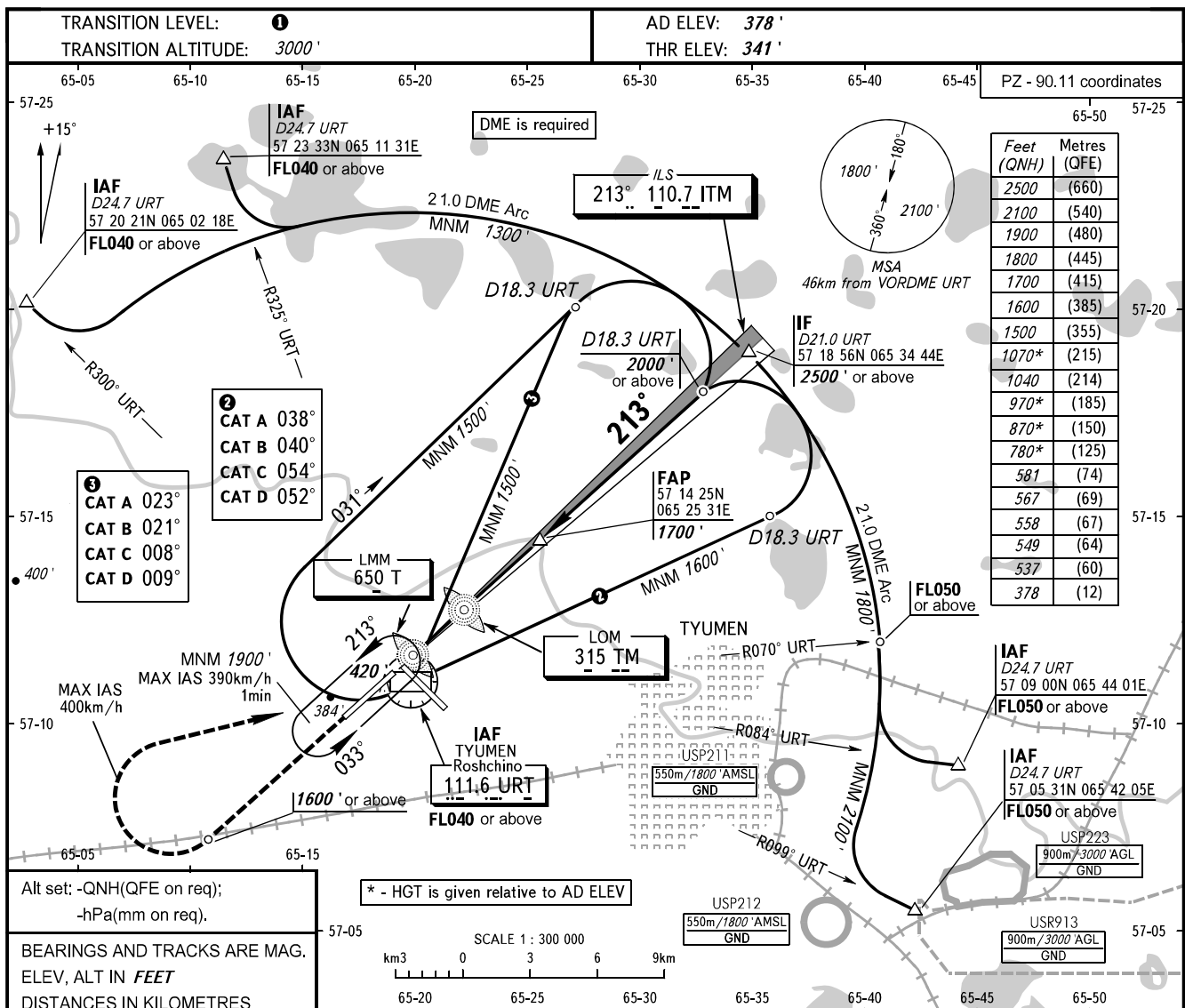


**INSTRUMENT
APPROACH
CHART - ICAO**

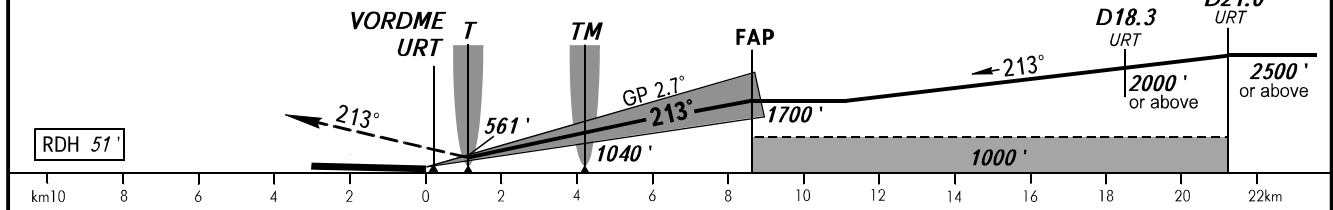
START **118.200**
RADAR **126.100**

**TYUMEN, RUSSIA
ROSHCHINO
ILS Y RWY 21 CAT I**



DME URT	4.0	6.0	8.0
ALTITUDE	797'	1196'	1595'

MISSED APPROACH
Climb on track 213° to 1600' or above, then turn RIGHT to VORDME URT climbing to FL040 or above, then according to chart or to the holding area.



OCA(H)		A	B	C	D								
Straight-in Approach	CAT I	537' (196')	549' (208')	558' (217')	567' (226')								
Circling		780' (410')	870' (500')	970' (600')	1070' (690')								
GROUND SPEED		km/h	150	180	210	240	270	300	330	360	390	420	450
RATE OF DESCENT		m/s	2.0	2.4	2.7	3.1	3.5	3.9	4.3	4.7	5.1	5.5	5.9
		ft/min	385	463	540	617	694	771	848	925	1002	1079	1156

TRANSITION LEVEL:
 - FL040 when QNH is 1013 hPa (760mm mercury column) or above;
 - FL050 when QNH is 977 hPa (733mm mercury column) or above, but less than 1013 hPa (760mm mercury column);
 - FL060 when QNH is less than 977 hPa (733mm mercury column).