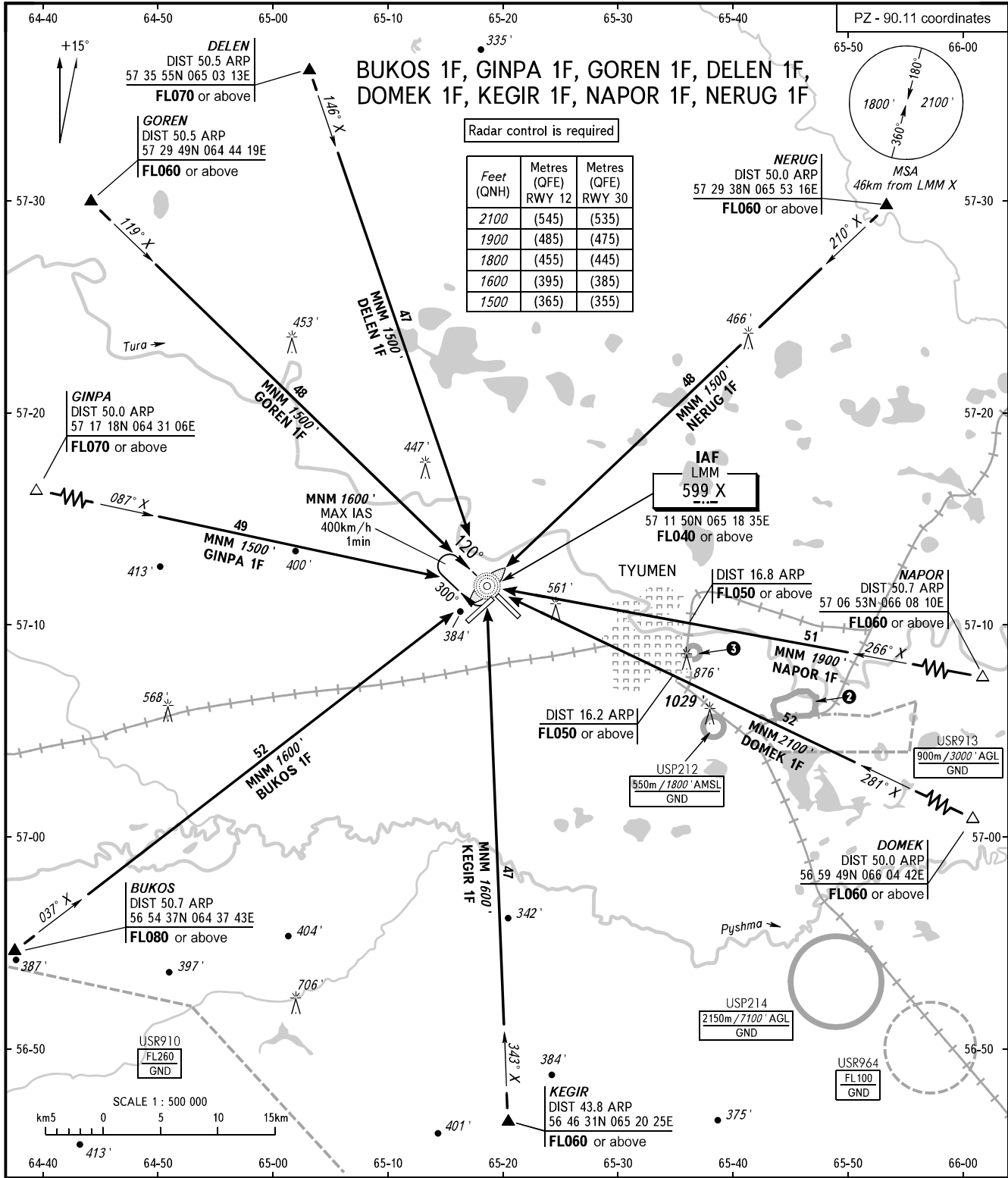


STANDARD ARRIVAL CHART  
INSTRUMENT (STAR) - ICAO

TYUMEN, RUSSIA  
ROSHCHINO  
RWY 12/30

TRANSITION  
LEVEL : 1



RADAR START 126.100  
118.200

- 1 TRANSITION LEVEL:  
 - FL040 when QNH is 1013 hPa (760mm mercury column) or above;  
 - FL050 when QNH is 977 hPa (733mm mercury column) or above, but less than 1013 hPa (760mm mercury column);  
 - FL060 when QNH is less than 977 hPa (733mm mercury column).

2 USP223  
900m / 3000' AGL  
GND

3 USP211  
550m / 1800' AMSL  
GND

BEARINGS AND TRACKS ARE MAGNETIC  
ALTITUDES AND ELEVATIONS IN FEET  
DISTANCES IN KILOMETRES

Alt set: -QNH(QFE on req);  
-hPa(mm on req).