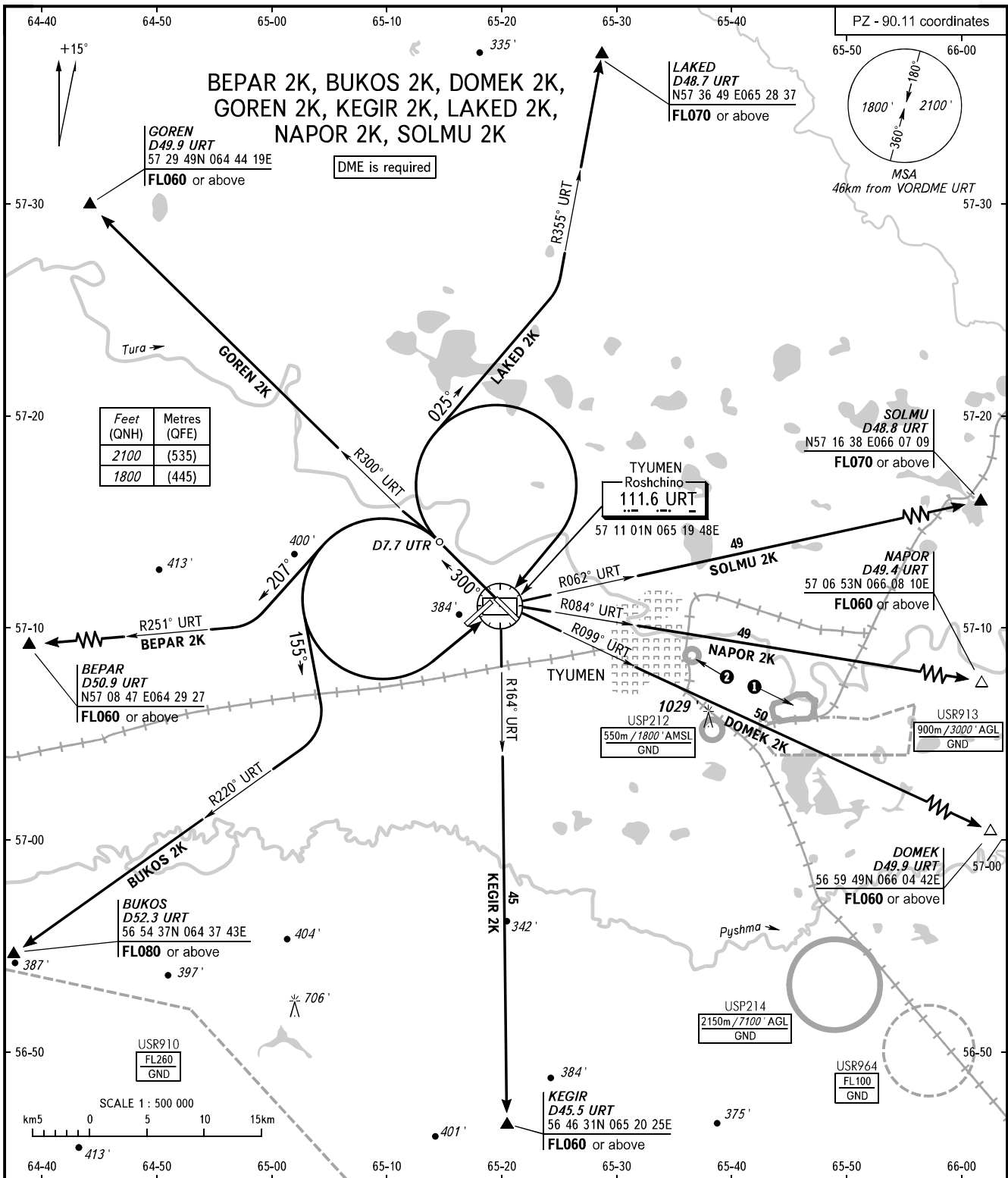


STANDARD DEPARTURE CHART
INSTRUMENT (SID) - ICAO

TRANSITION
ALTITUDE: 3000'

TYUMEN, RUSSIA
ROSHCHINO
RWY 30



START 118.200
RADAR 126.100

WARNING
The minimum climb gradients (required due to the airspace structure only) are as follows:
- 3.7% up to FL070 for SID LAKED 2K;
- 3.6% up to FL060 for SID GOREN 2K.

BEARINGS AND TRACKS ARE MAGNETIC
ALTITUDES AND ELEVATIONS IN FEET
DISTANCES IN KILOMETRES

Alt set: -QNH(QFE on req);
-hPa(mm on req).